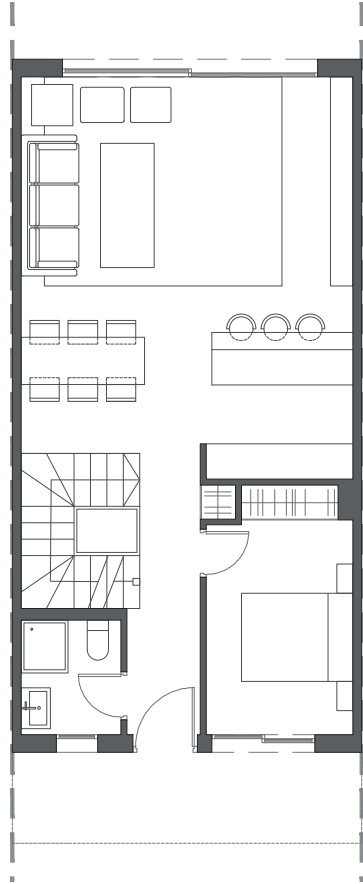
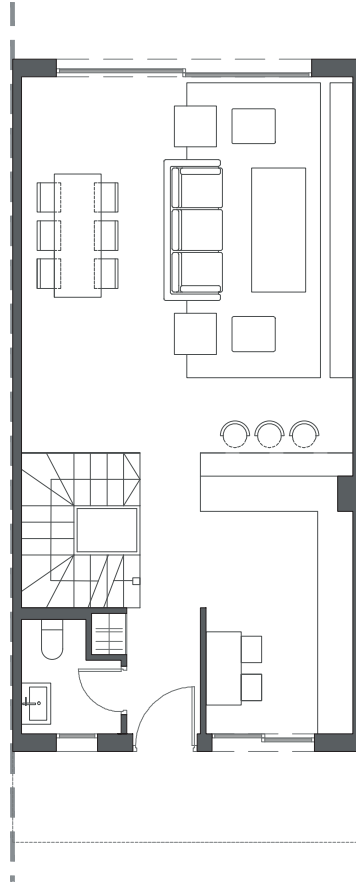


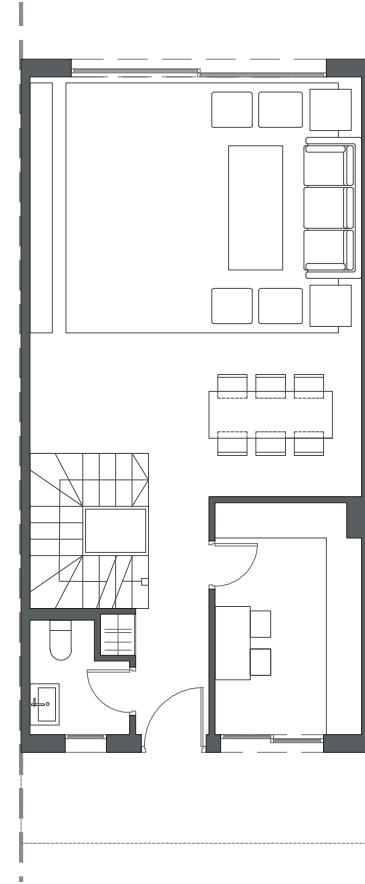
  
LA VALVEGA  
de La Cala



GROUND FLOOR A



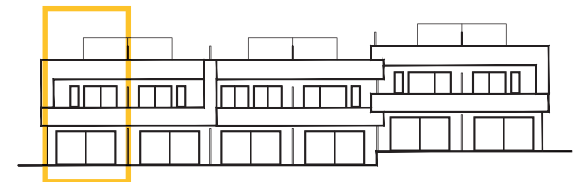
GROUND FLOOR B



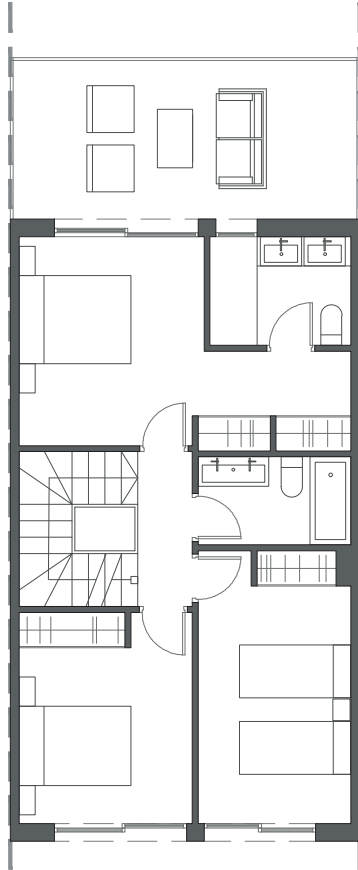
GROUND FLOOR C

HOUSE 1 - BLOCK 1

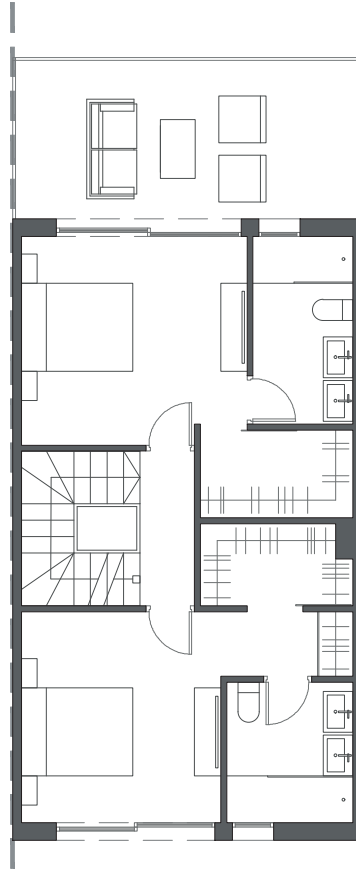
TYPE 2 - RIGHT



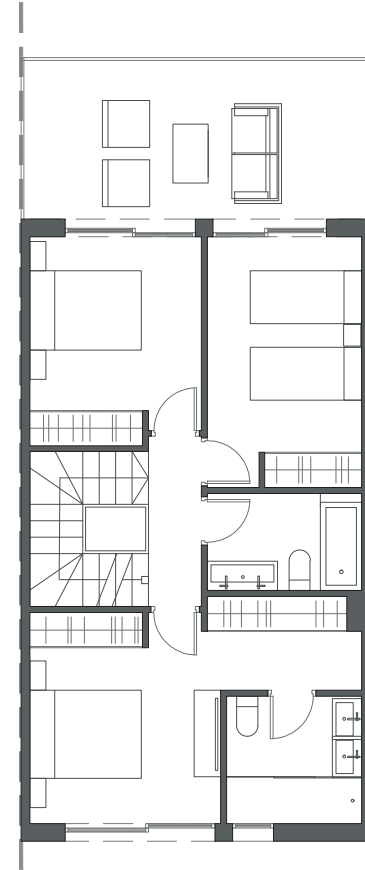
Interior view



FIRST FLOOR A



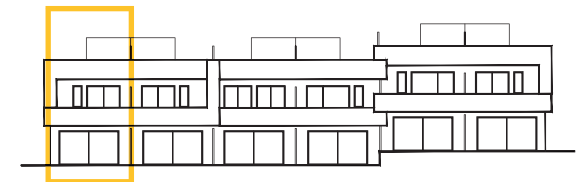
FIRST FLOOR B



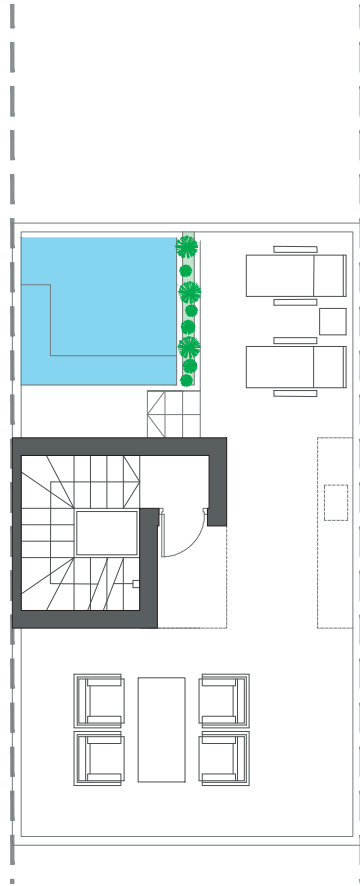
FIRST FLOOR C

HOUSE 1 - BLOCK 1

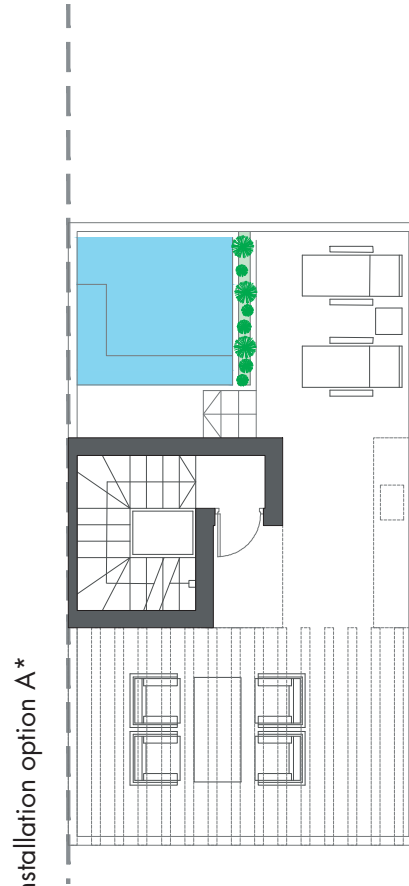
TYPE 2 - RIGHT



Interior view

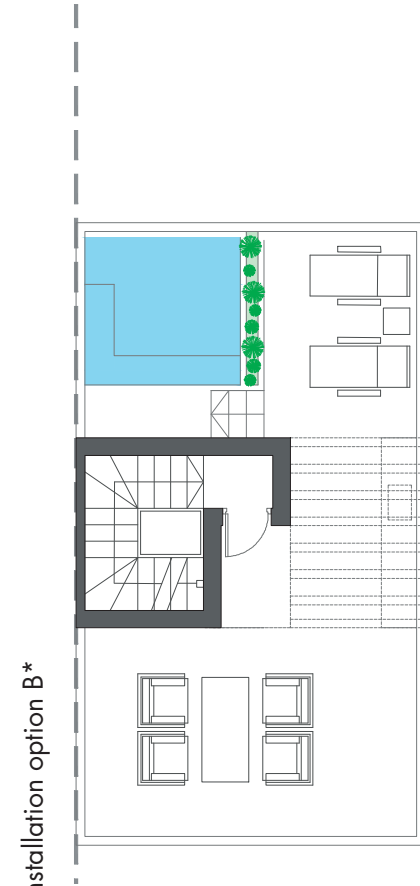


ROOFTOP



Pre-installation option A\*

ROOFTOP

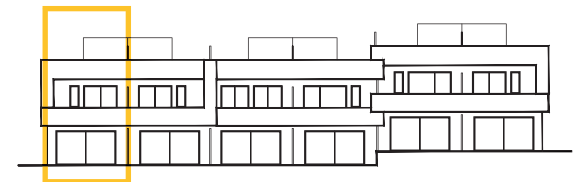


Pre-installation option B\*

ROOFTOP

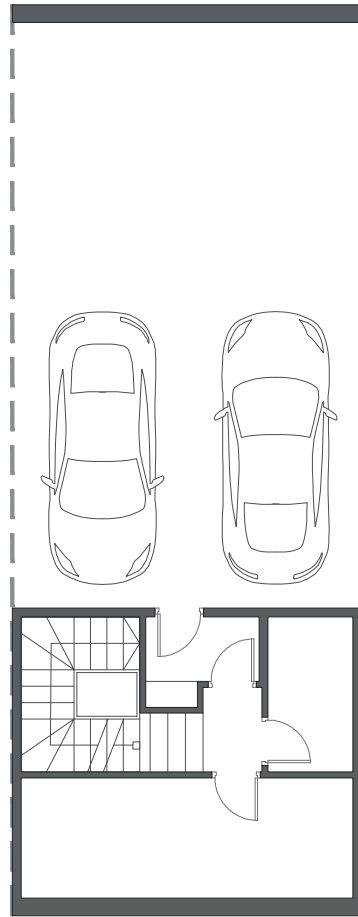
HOUSE 1 - BLOCK 1

TYPE 2 - RIGHT

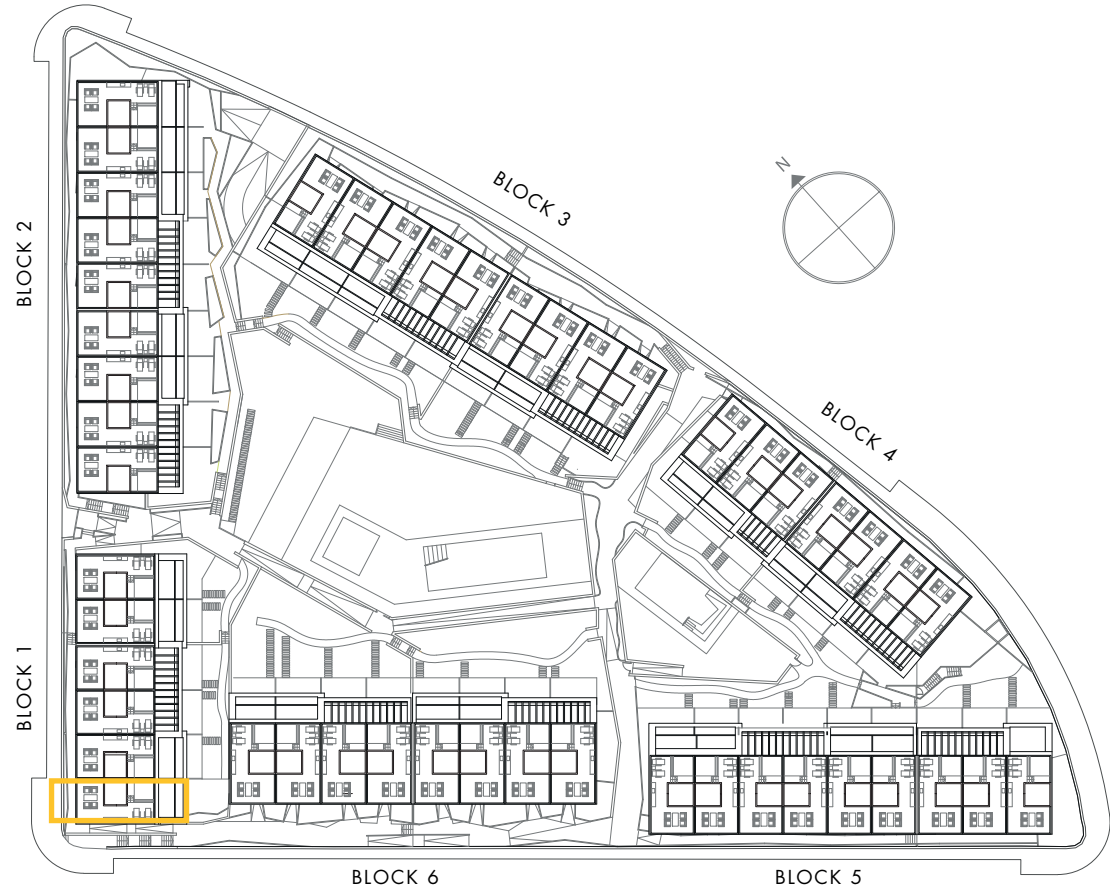


Interior view

\*These options only include the pre-installation for a pergola, which the client can install in the desired configuration.



BASEMENT

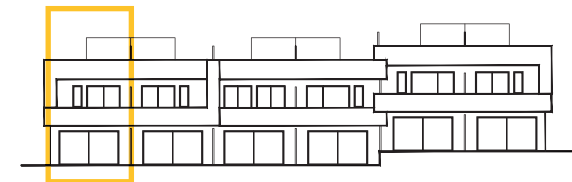


BLOCK 6

BLOCK 5

HOUSE 1 - BLOCK 1

TYPE 2 - RIGHT



Interior view