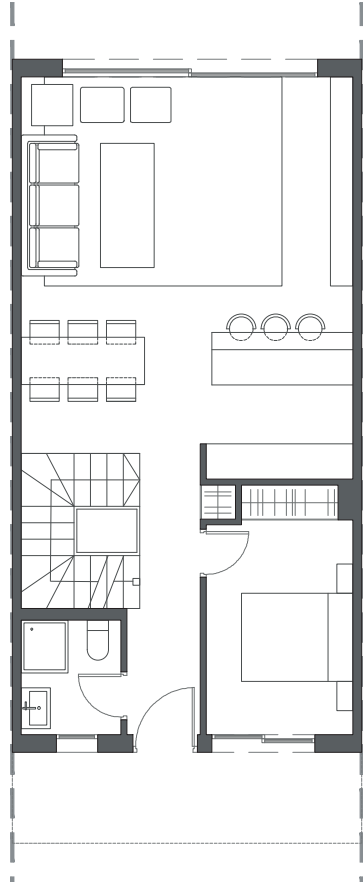
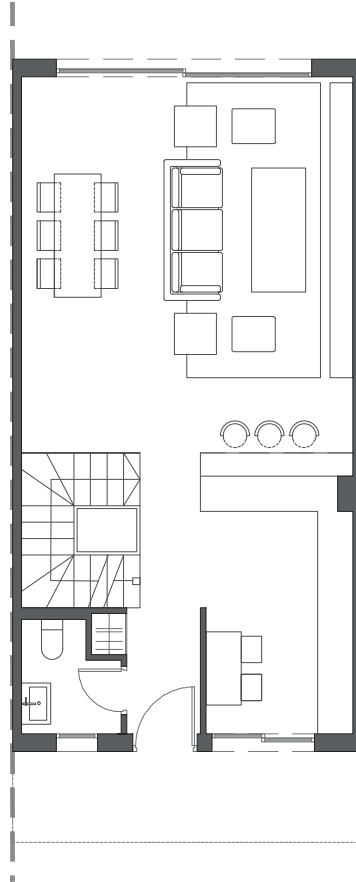


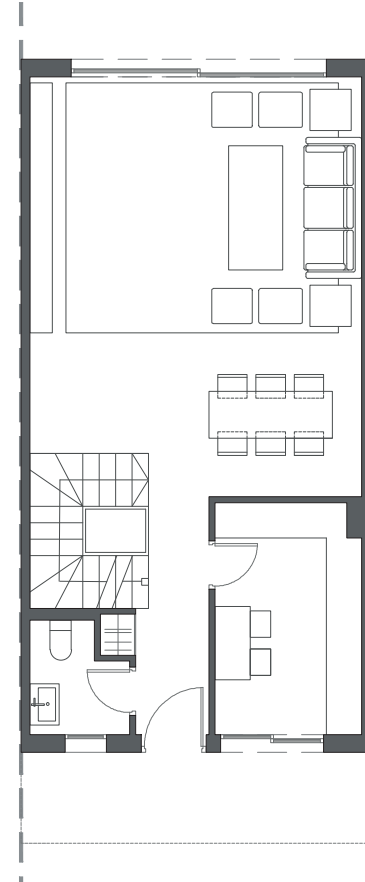

LA VALVEGA
de La Cala



GROUND FLOOR A



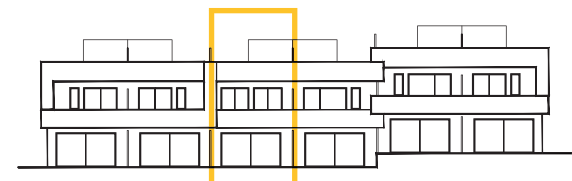
GROUND FLOOR B



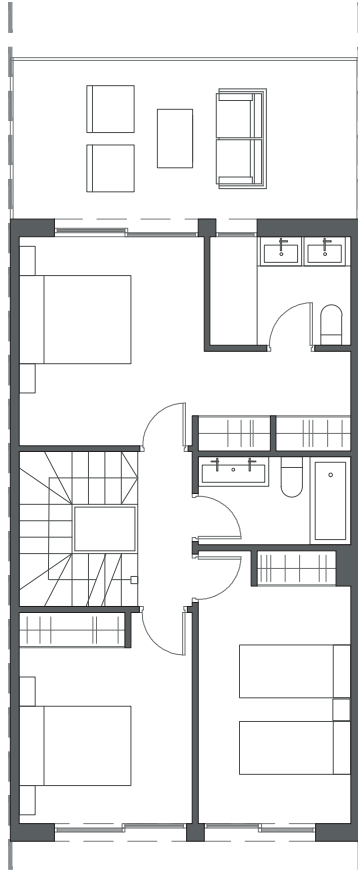
GROUND FLOOR C

HOUSE 3 - BLOCK 1

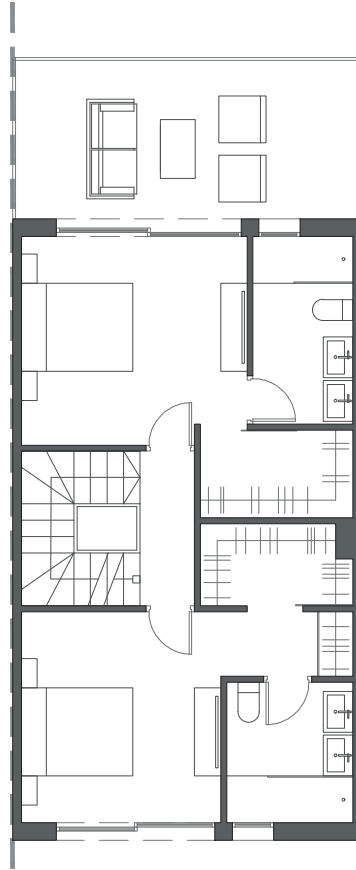
TYPE 2 - RIGHT



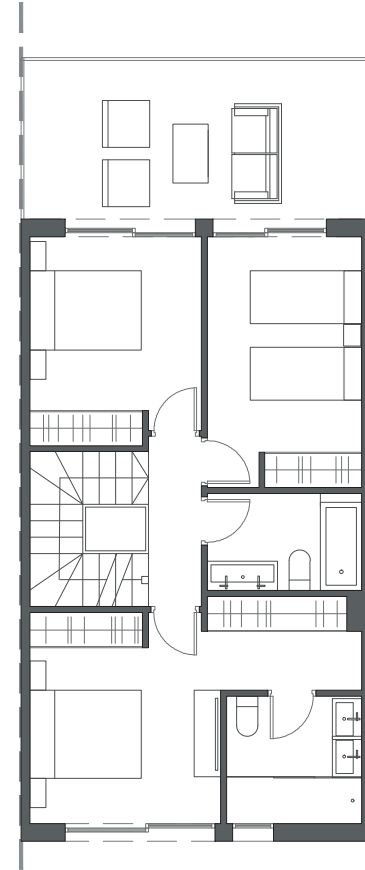
Interior view



FIRST FLOOR A



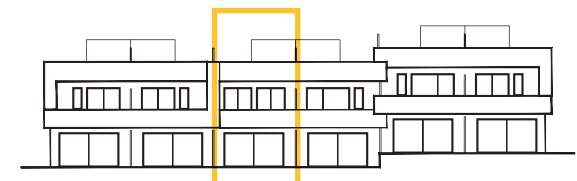
FIRST FLOOR B



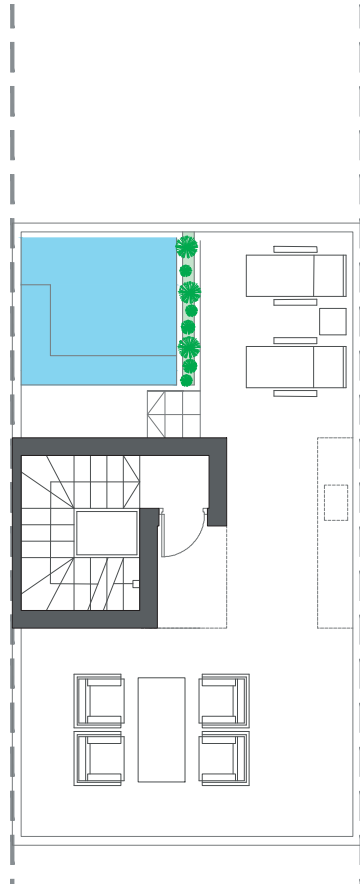
FIRST FLOOR C

HOUSE 3 - BLOCK 1

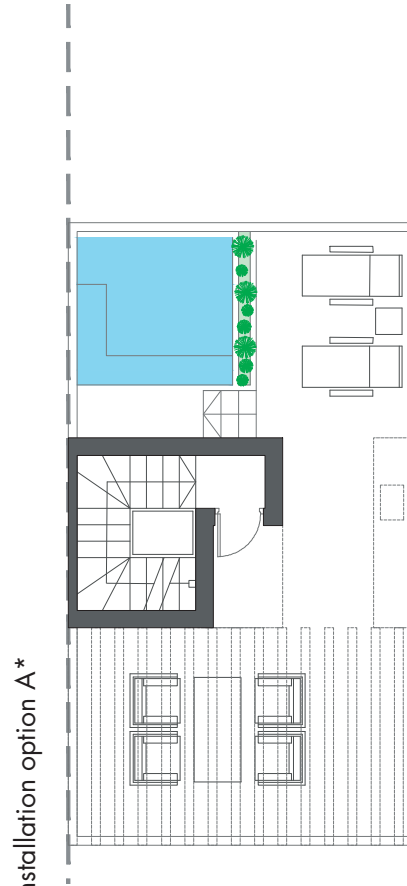
TYPE 2 - RIGHT



Interior view

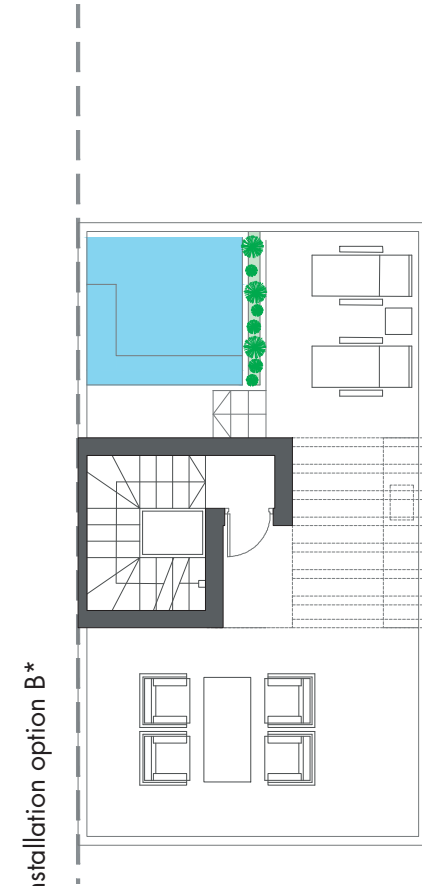


ROOFTOP



Pre-installation option A*

ROOFTOP

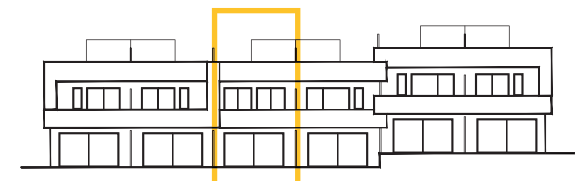


Pre-installation option B*

ROOFTOP

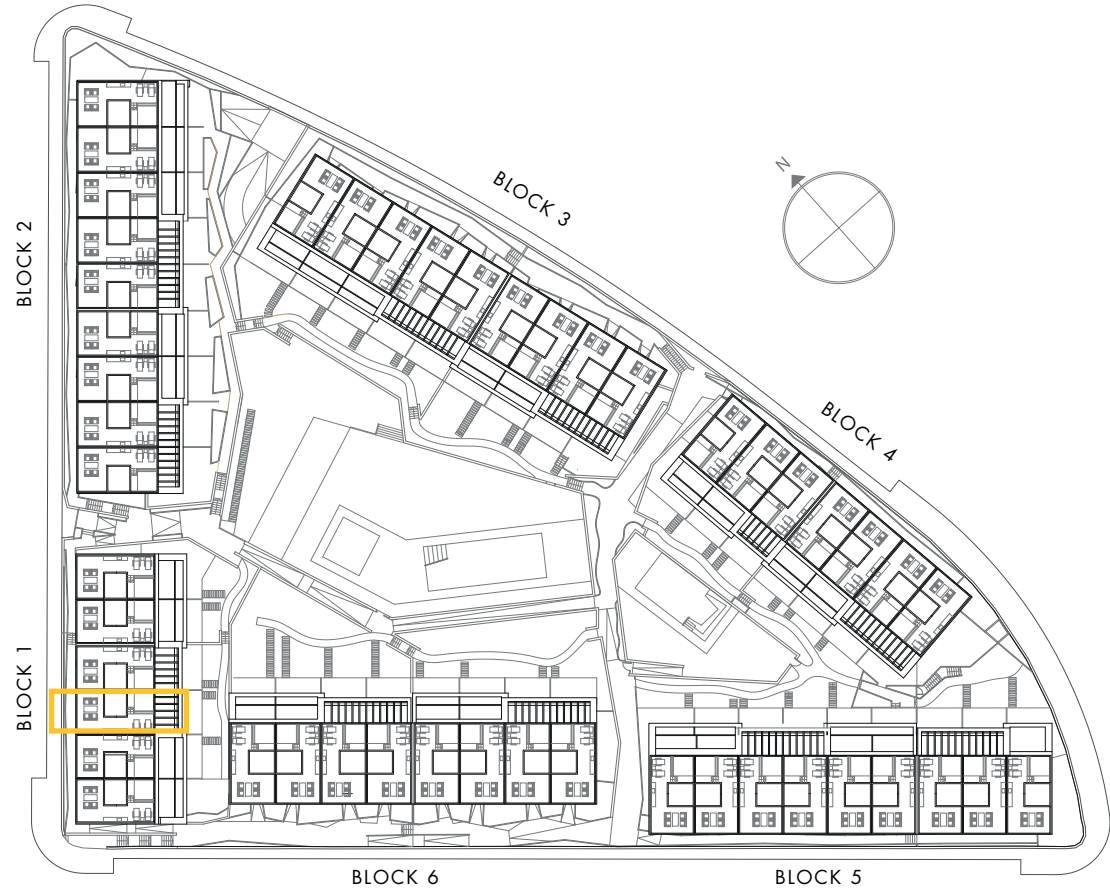
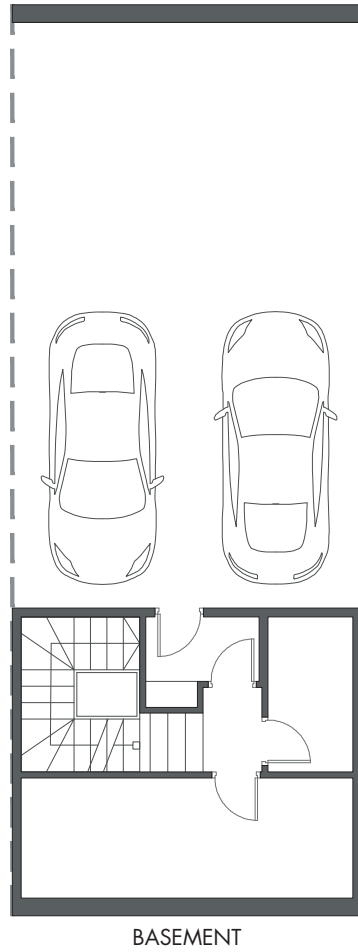
HOUSE 3 - BLOCK 1

TYPE 2 - RIGHT



Interior view

*These options only include the pre-installation for a pergola, which the client can install in the desired configuration.



HOUSE 3 - BLOCK 1

TYPE 2 - RIGHT

