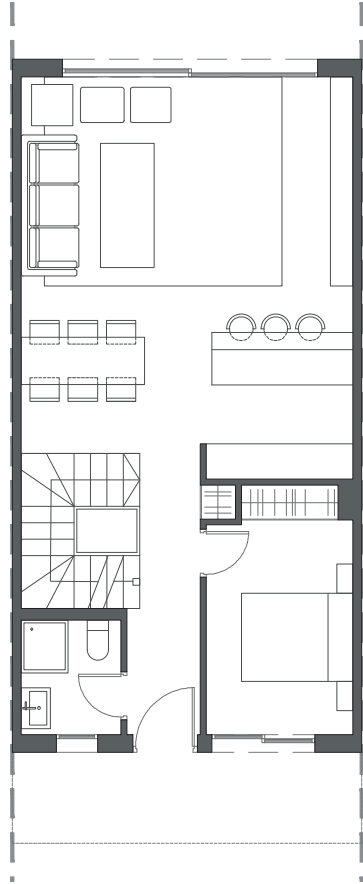
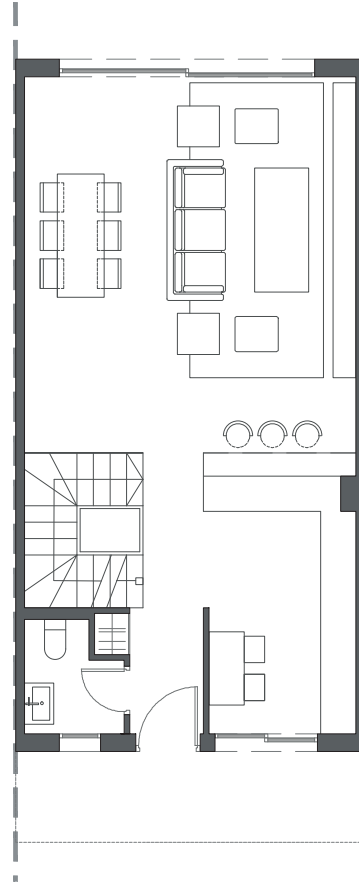


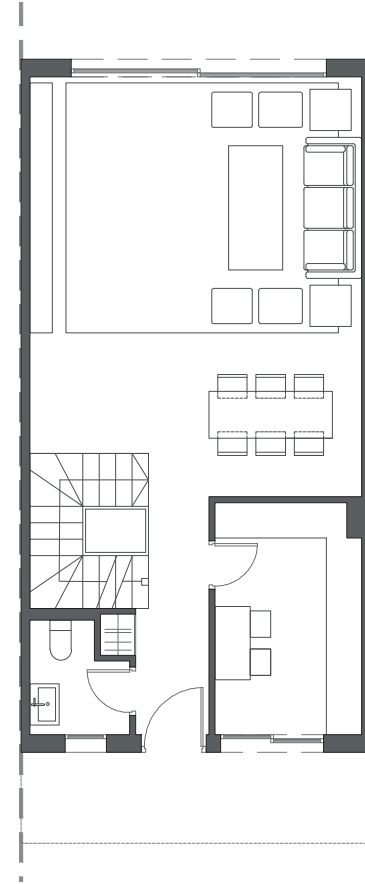
  
LA VALVEGA  
de La Cala



GROUND FLOOR A



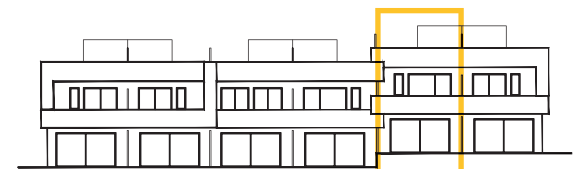
GROUND FLOOR B



GROUND FLOOR C

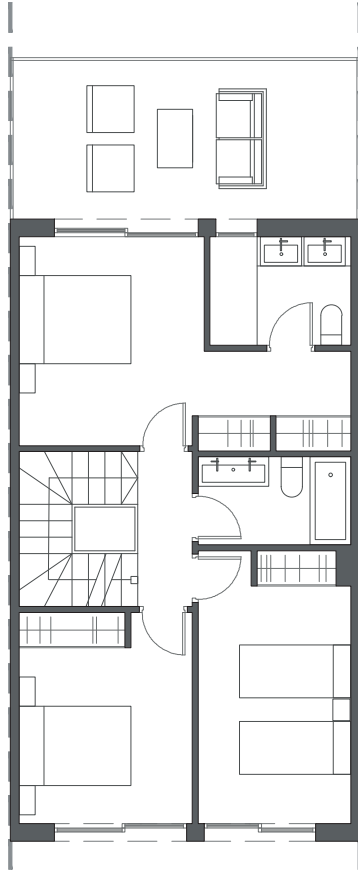
HOUSE 5 - BLOCK 1

TYPE 2 - RIGHT

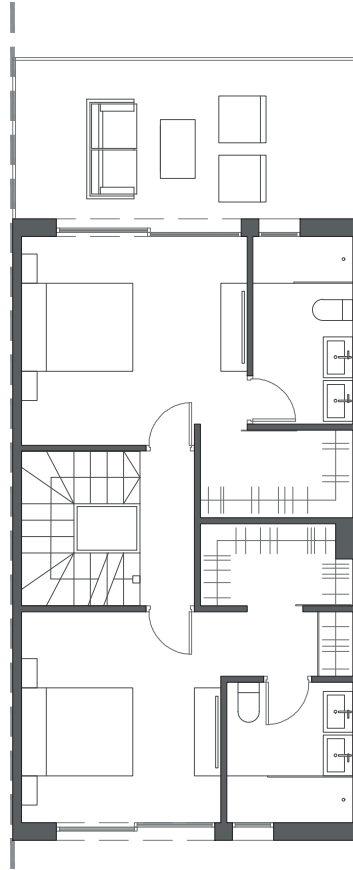


Interior view

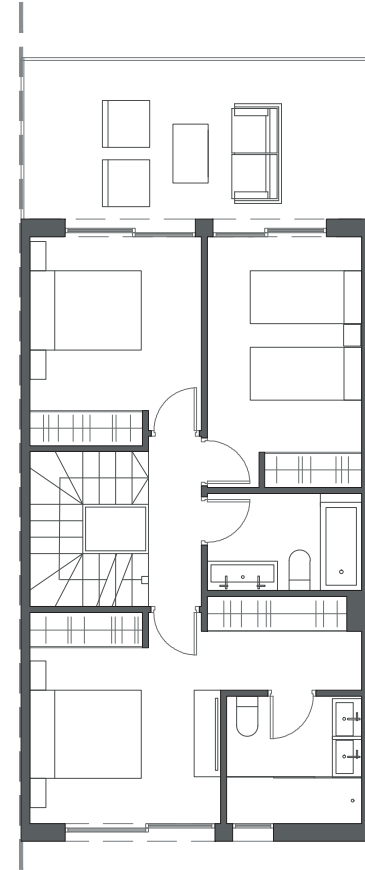
  
LA VALVEGA  
de La Cala



FIRST FLOOR A



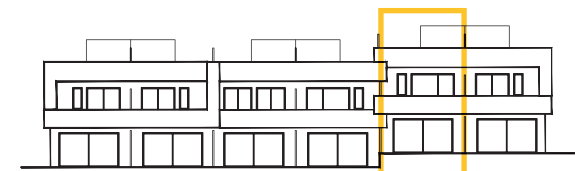
FIRST FLOOR B



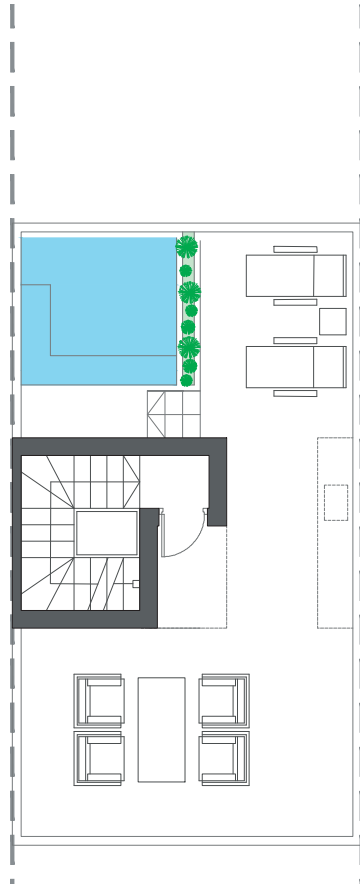
FIRST FLOOR C

HOUSE 5 - BLOCK 1

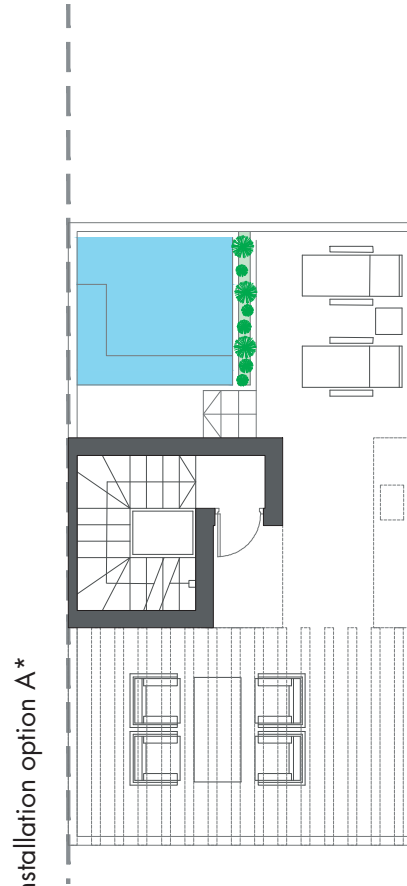
TYPE 2 - RIGHT



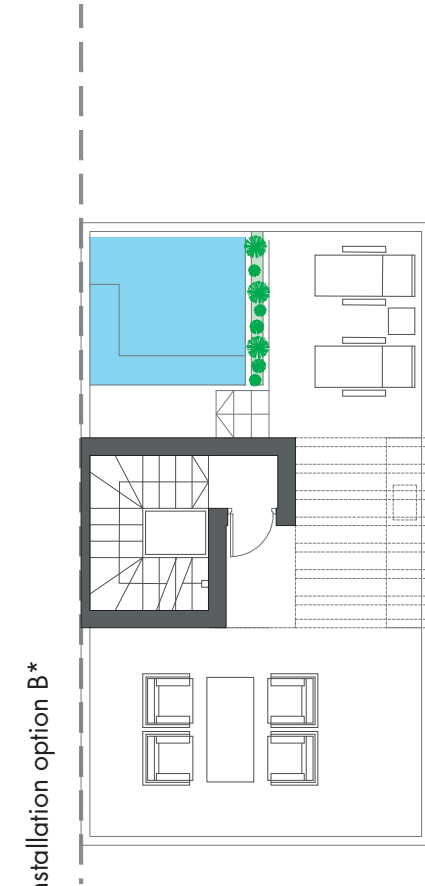
Interior view



ROOFTOP



ROOFTOP

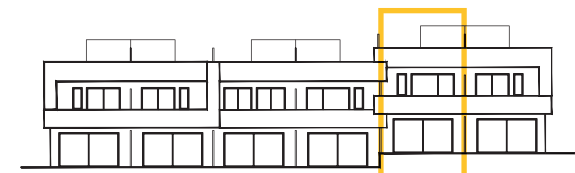


ROOFTOP

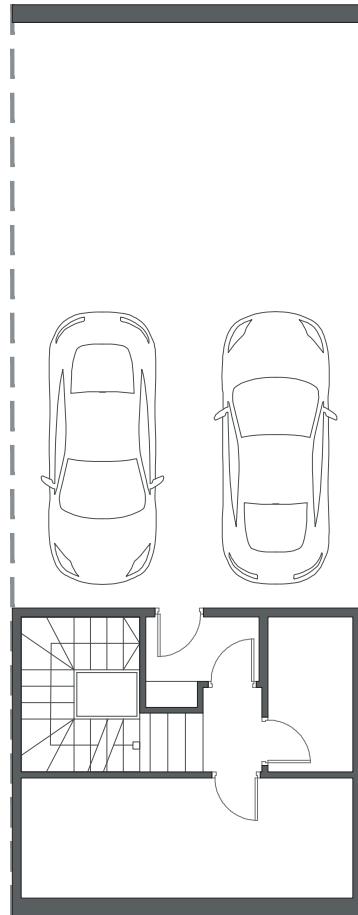
HOUSE 5 - BLOCK 1

TYPE 2 - RIGHT

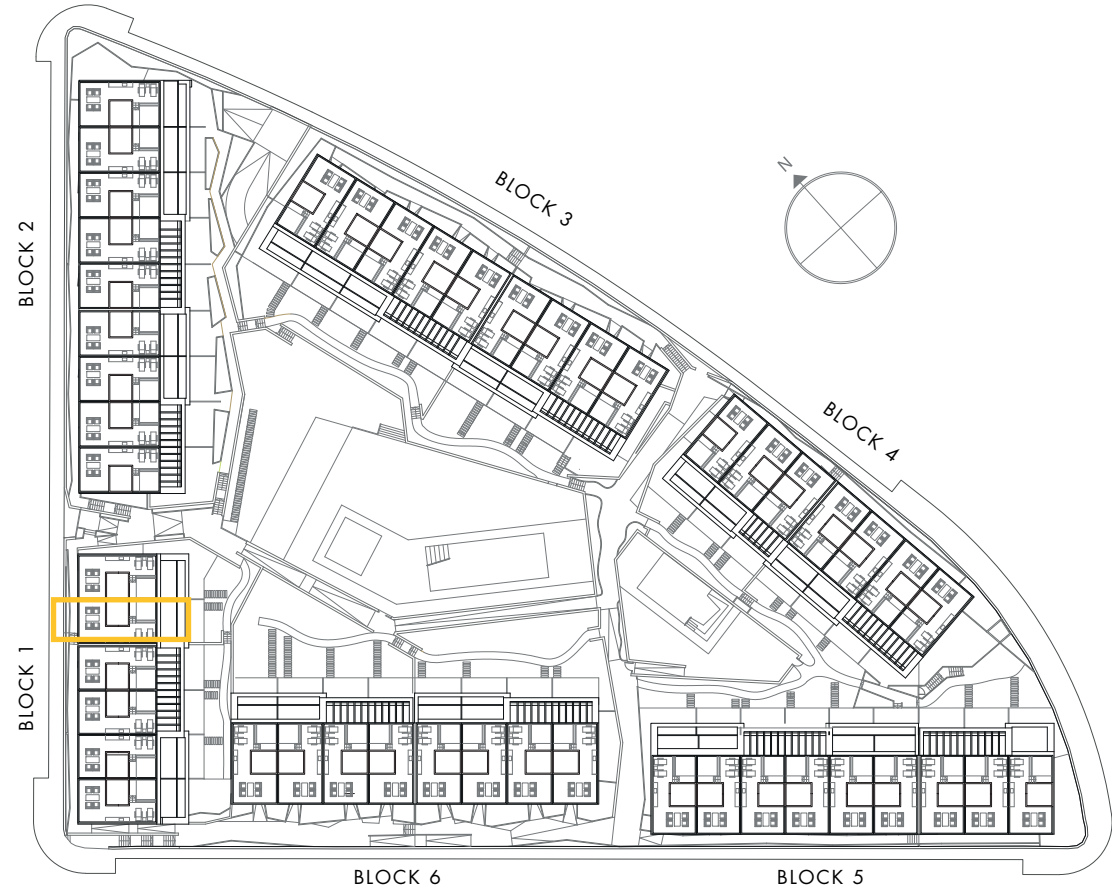
\*These options only include the pre-installation for a pergola, which the client can install in the desired configuration.



Interior view



BASEMENT

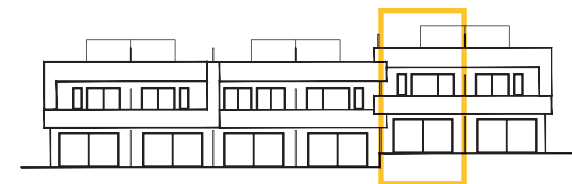


BLOCK 6

BLOCK 5

HOUSE 5 - BLOCK 1

TYPE 2 - RIGHT



Interior view