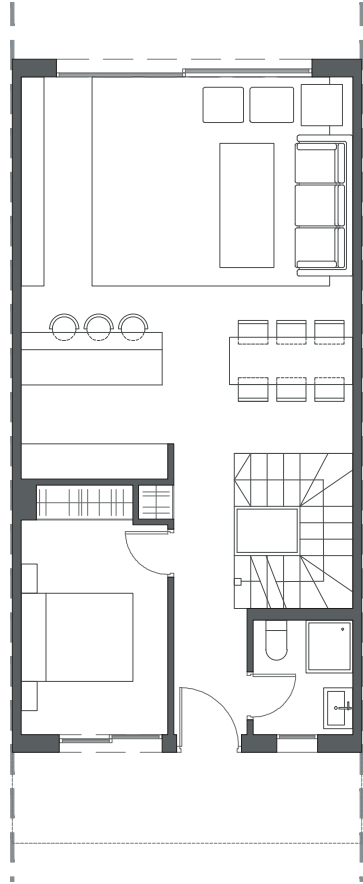
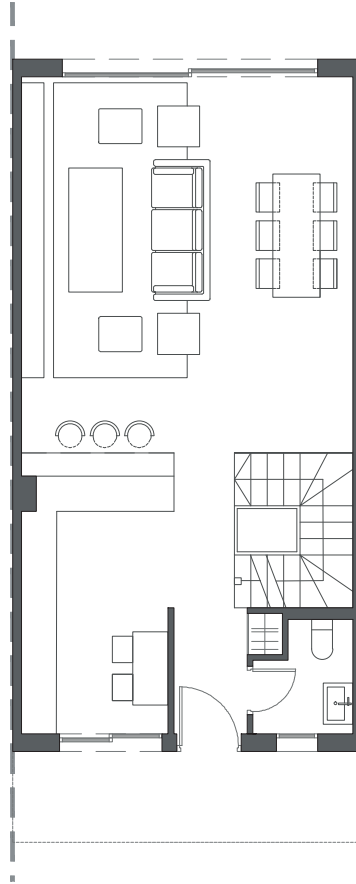




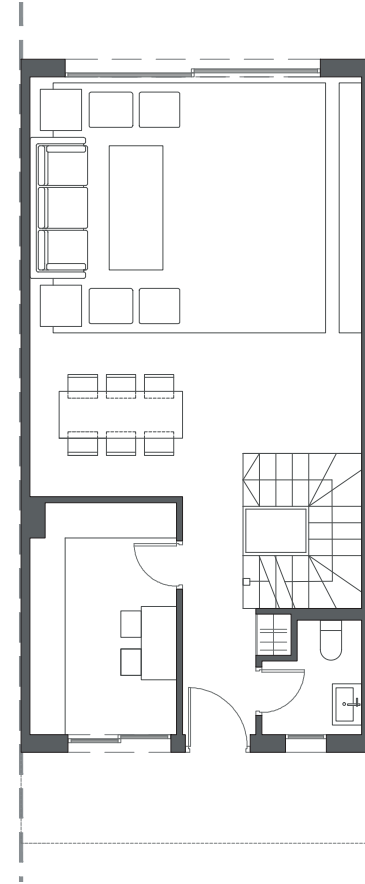
LA VALVEGA
de La Cala



GROUND FLOOR A



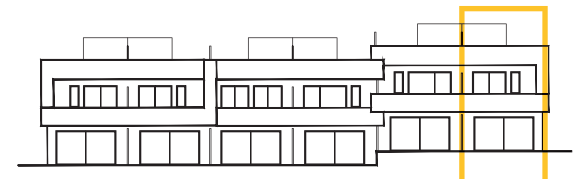
GROUND FLOOR B



GROUND FLOOR C

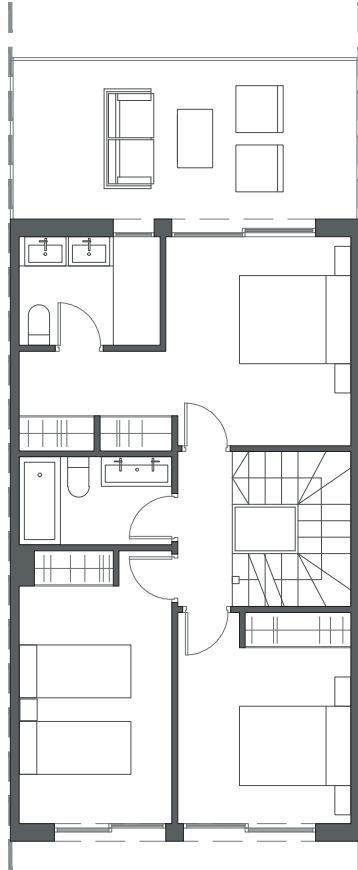
HOUSE 6 - BLOCK 1

TYPE 2 - LEFT

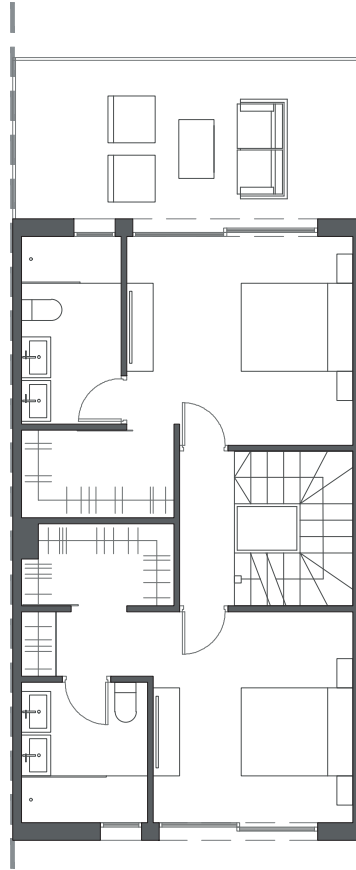


Interior view

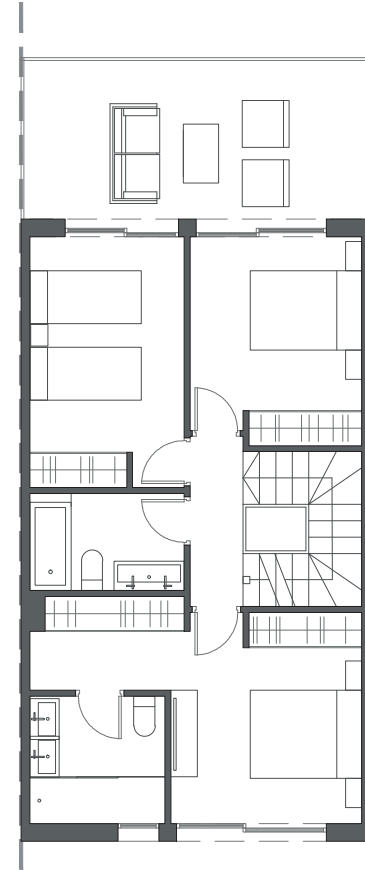
LA VALVEGA
de La Cala



FIRST FLOOR A



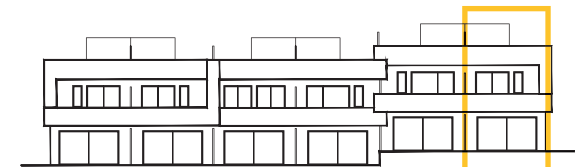
FIRST FLOOR B



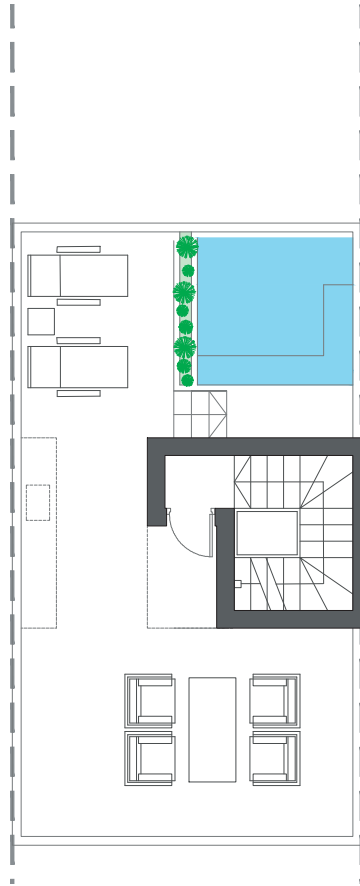
FIRST FLOOR C

HOUSE 6 - BLOCK 1

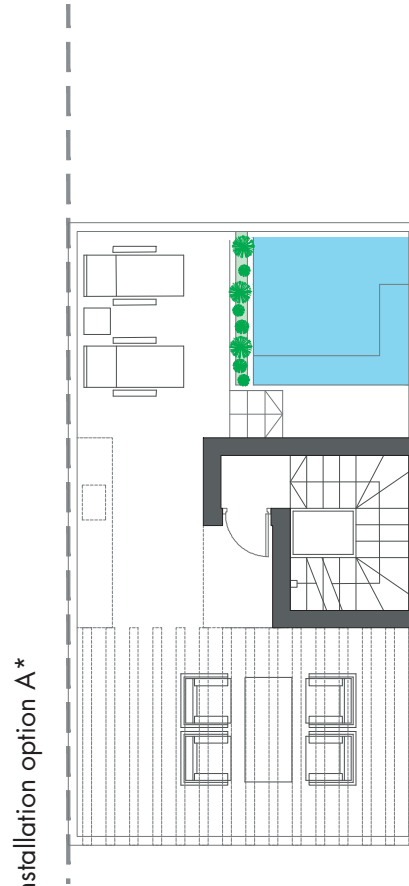
TYPE 2 - LEFT



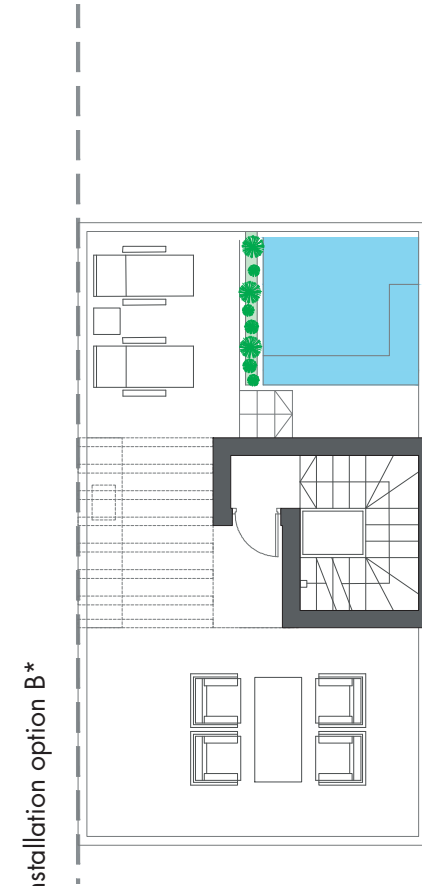
Interior view



ROOFTOP



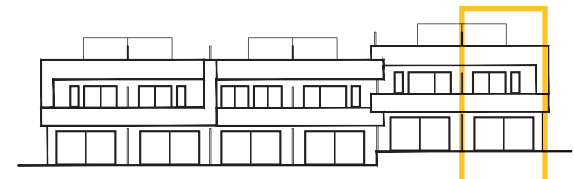
ROOFTOP



ROOFTOP

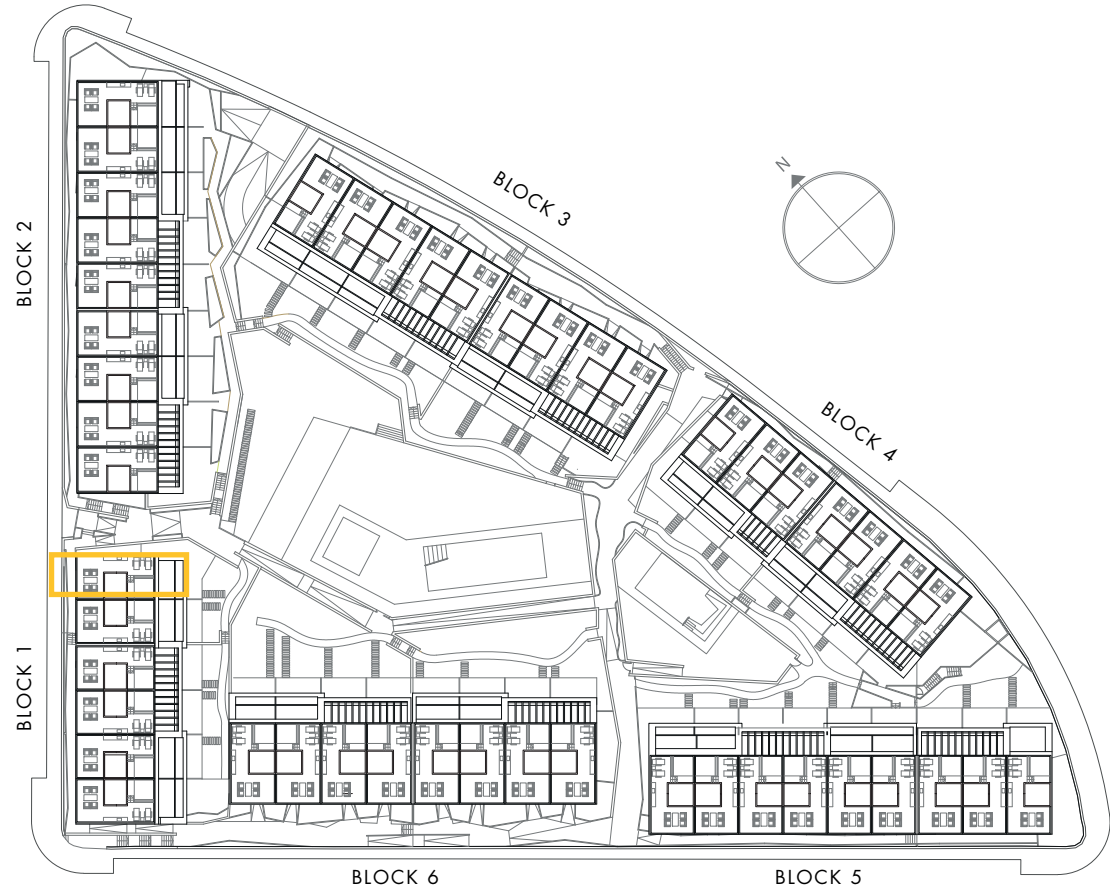
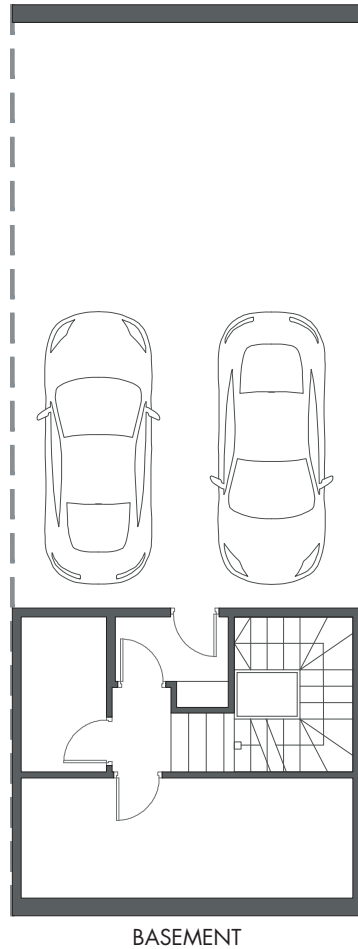
HOUSE 6 - BLOCK 1

TYPE 2 - LEFT



Interior view

*These options only include the pre-installation for a pergola, which the client can install in the desired configuration.



HOUSE 6 - BLOCK 1

TYPE 2 - LEFT

