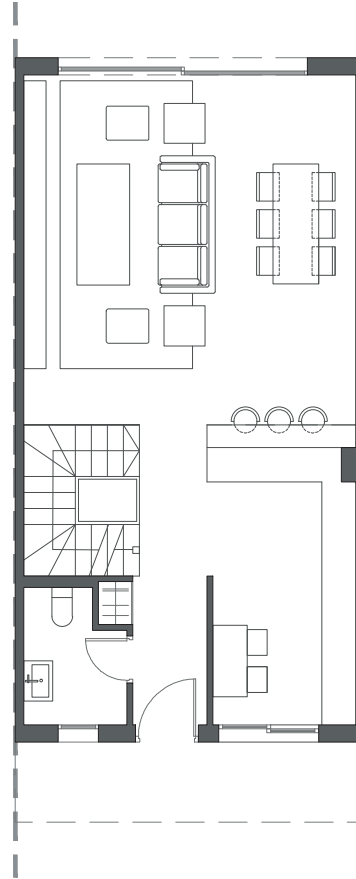
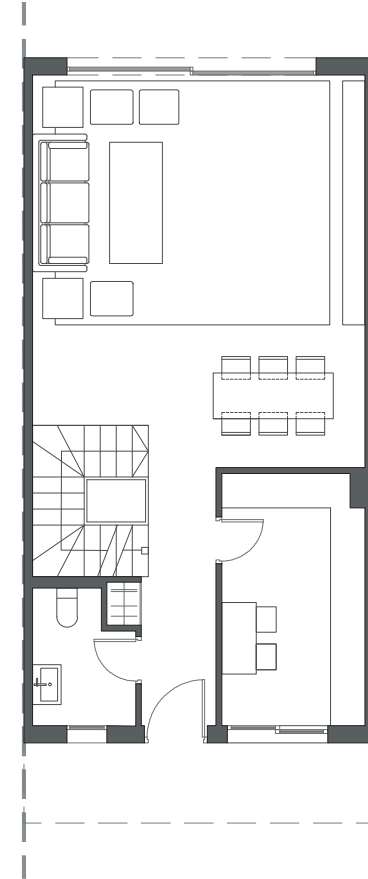


GROUND FLOOR A



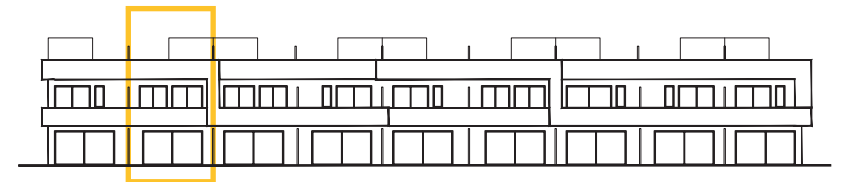
GROUND FLOOR B



GROUND FLOOR C

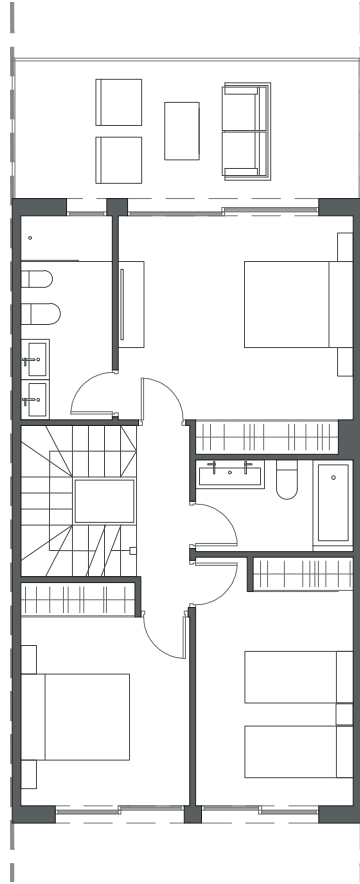
HOUSE 8 - BLOCK 2

TYPE 1-A - RIGHT

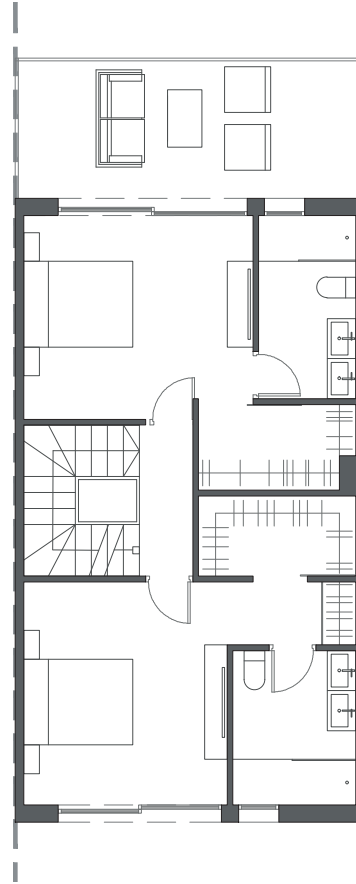


Interior view


LA VALVEGA
de La Cala



FIRST FLOOR A



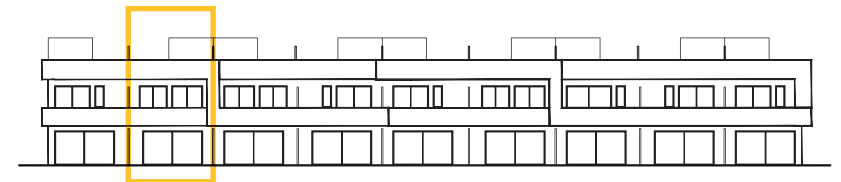
FIRST FLOOR B



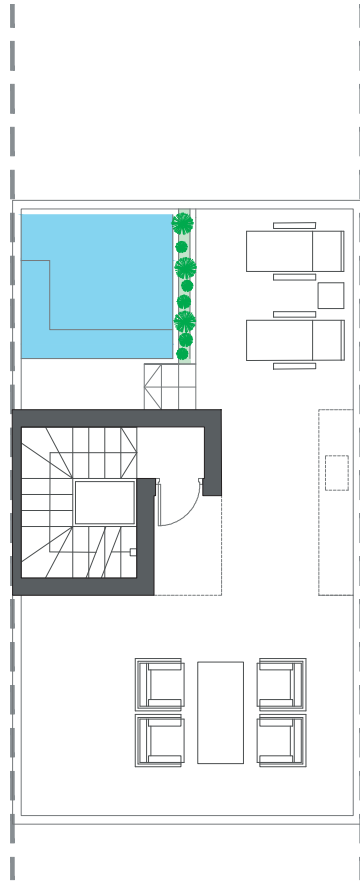
FIRST FLOOR C

HOUSE 8 - BLOCK 2

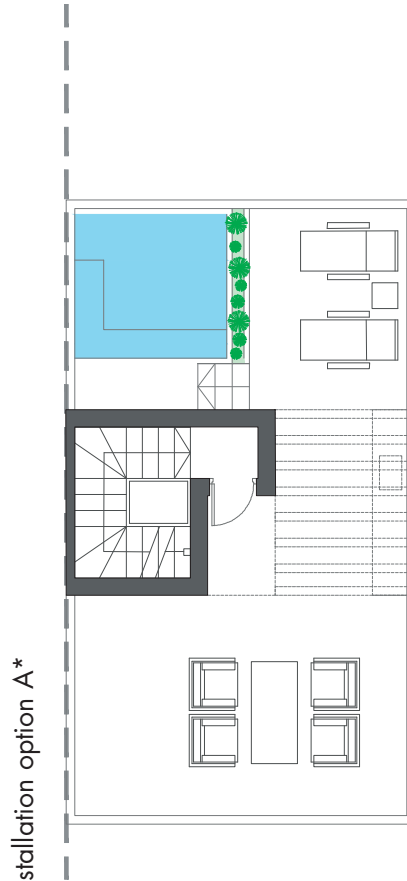
TYPE 1-A - RIGHT



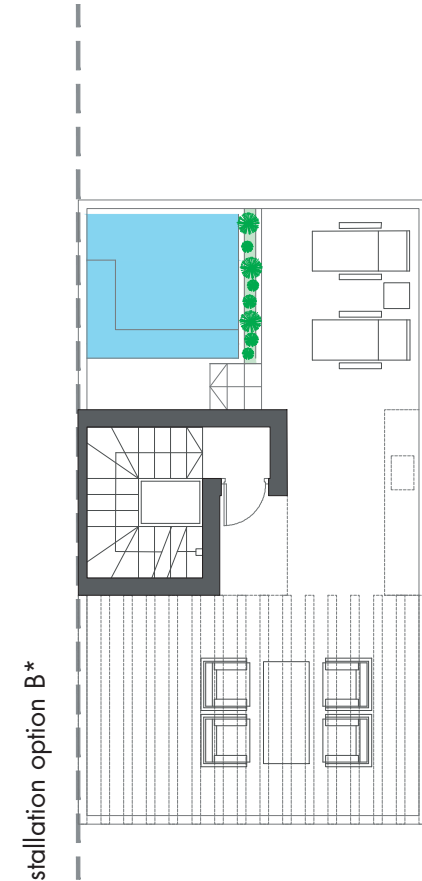
Interior view



ROOFTOP



ROOFTOP

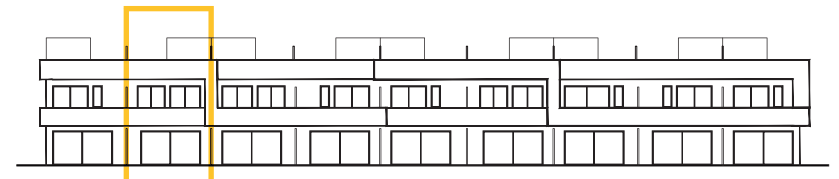


ROOFTOP

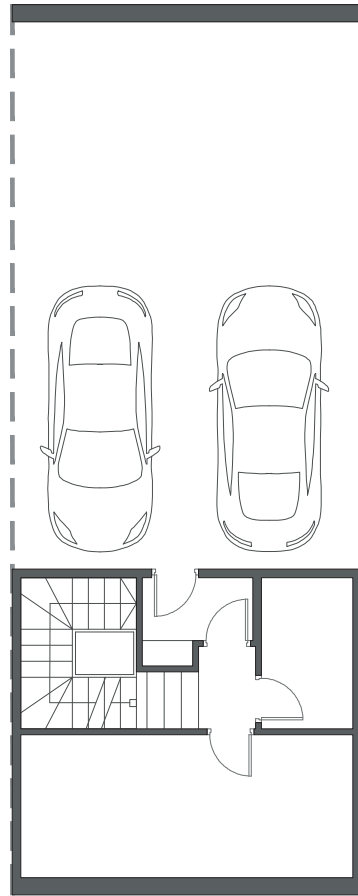
HOUSE 8 - BLOCK 2

TYPE 1-A - RIGHT

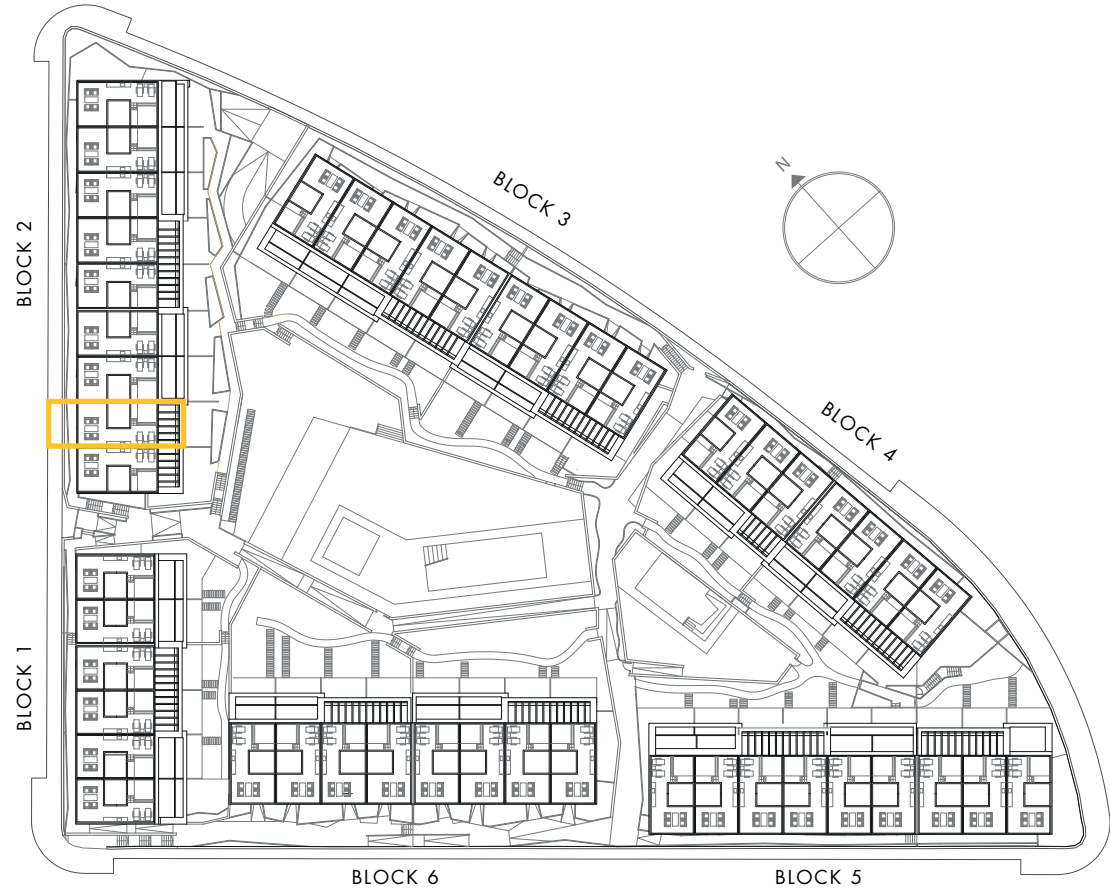
*These options only include the pre-installation for a pergola, which the client can install in the desired configuration.



Interior view



BASEMENT

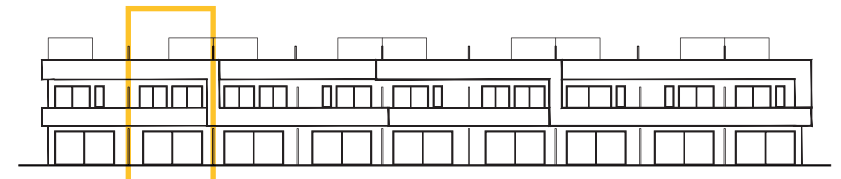


BLOCK 6

BLOCK 5

HOUSE 8 - BLOCK 2

TYPE 1-A - RIGHT



Interior view