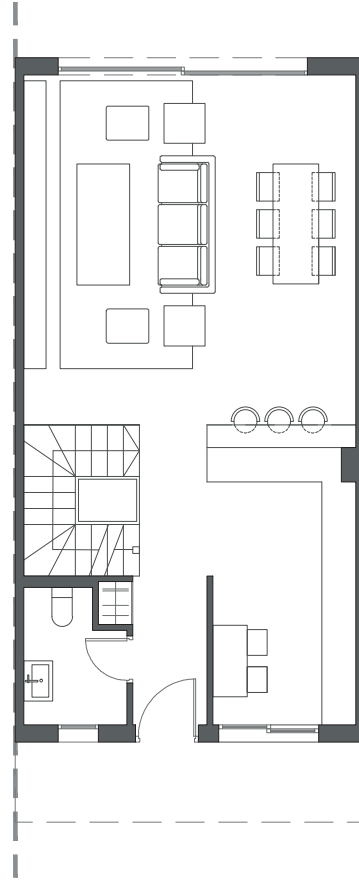
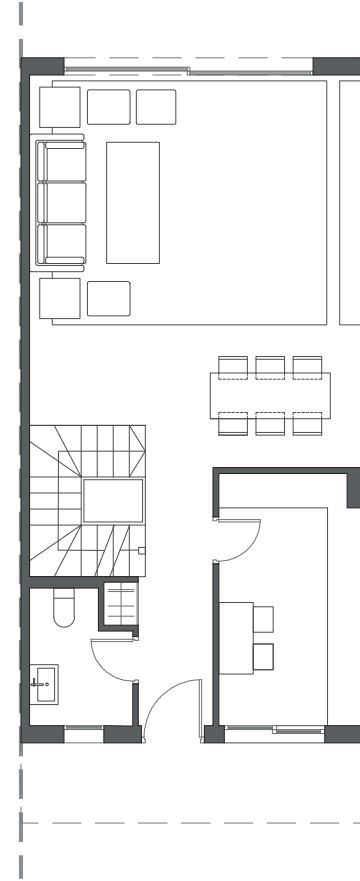


GROUND FLOOR A



GROUND FLOOR B



GROUND FLOOR C

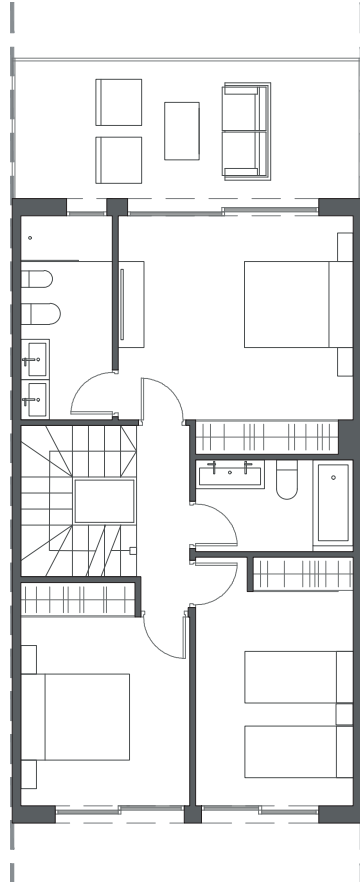
HOUSE 10 - BLOCK 2

TYPE 1-A - RIGHT

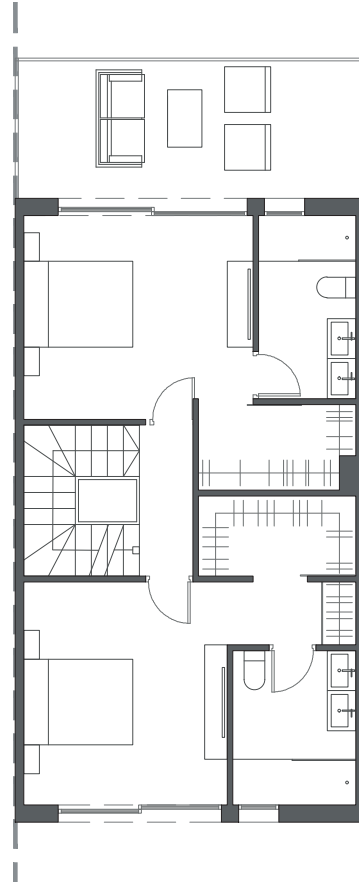


Interior view

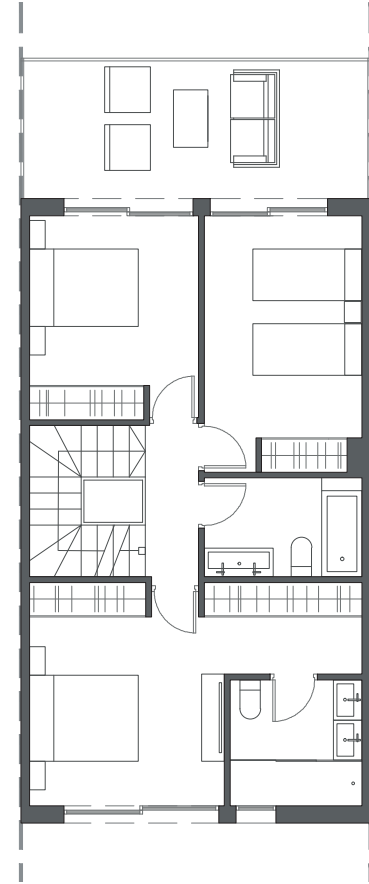
  
LA VALVEGA  
de La Cala



FIRST FLOOR A



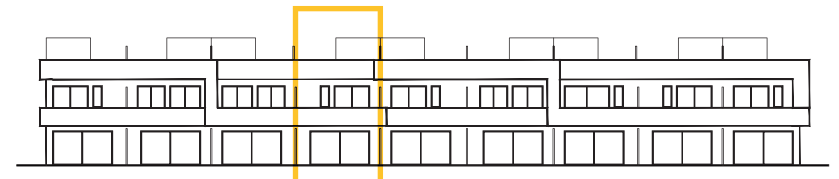
FIRST FLOOR B



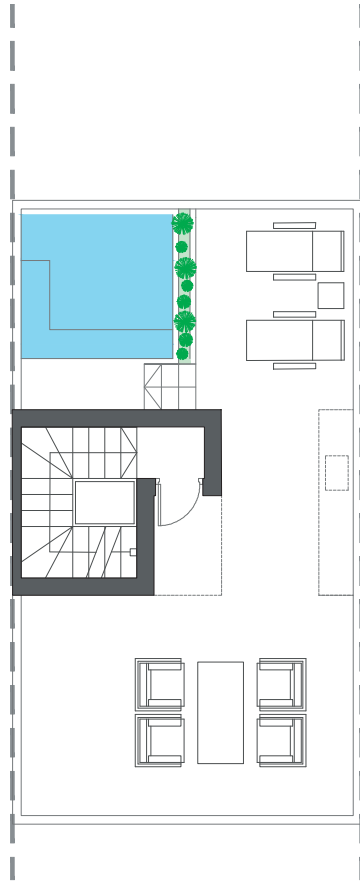
FIRST FLOOR C

HOUSE 10 - BLOCK 2

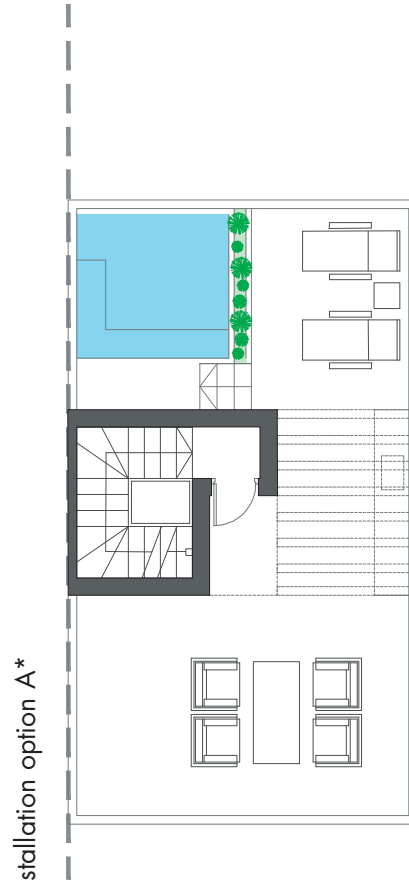
TYPE 1-A - RIGHT



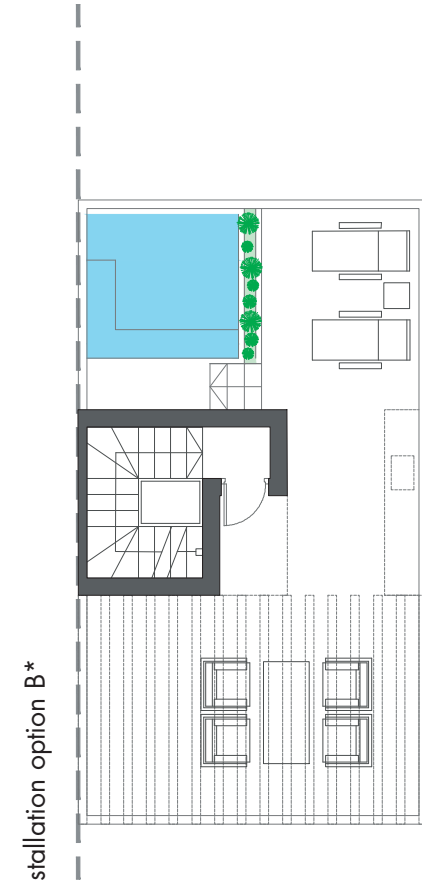
Interior view



ROOFTOP



ROOFTOP



ROOFTOP

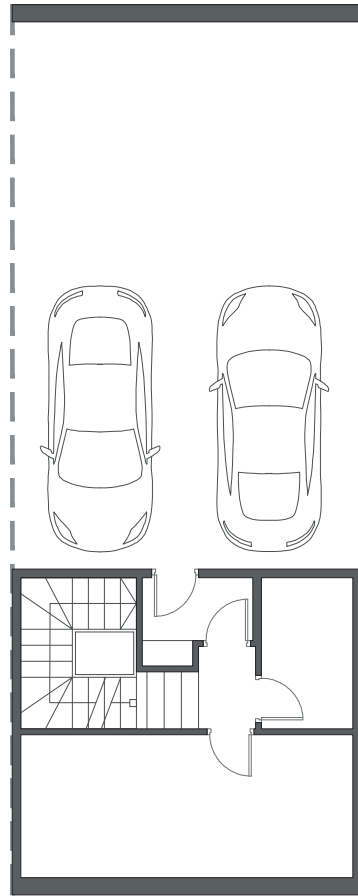
HOUSE 10 - BLOCK 2

TYPE 1-A - RIGHT

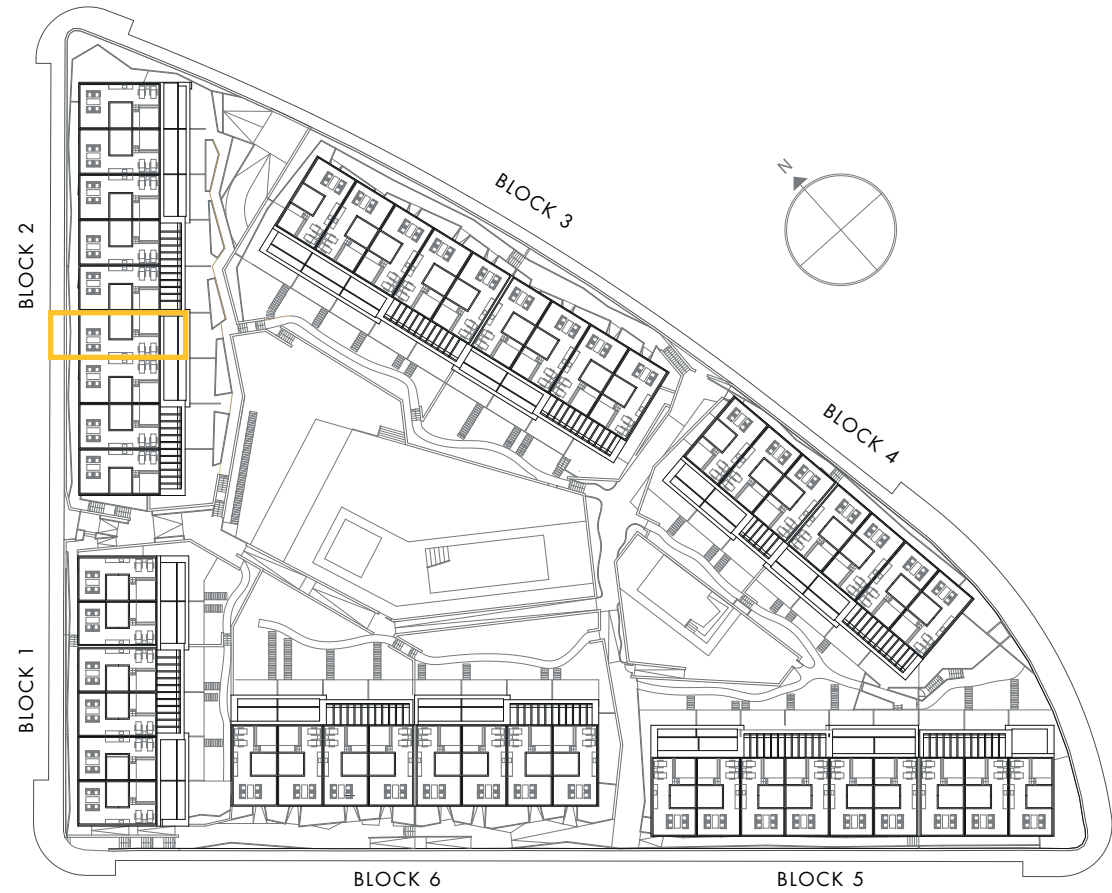
\*These options only include the pre-installation for a pergola, which the client can install in the desired configuration.



Interior view



BASEMENT



BLOCK 6

BLOCK 5

HOUSE 10 - BLOCK 2

TYPE 1-A - RIGHT



Interior view