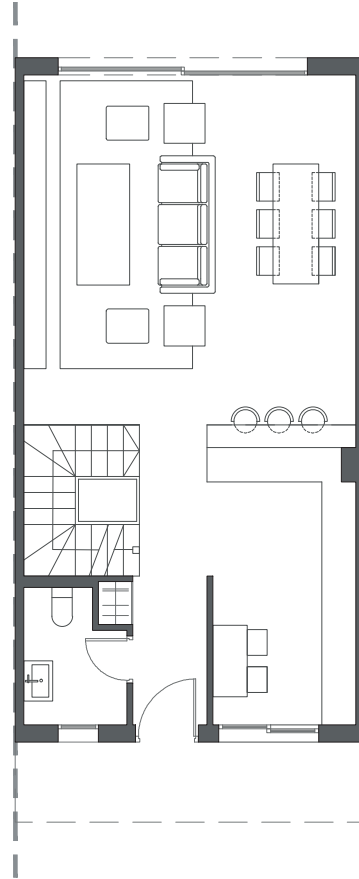
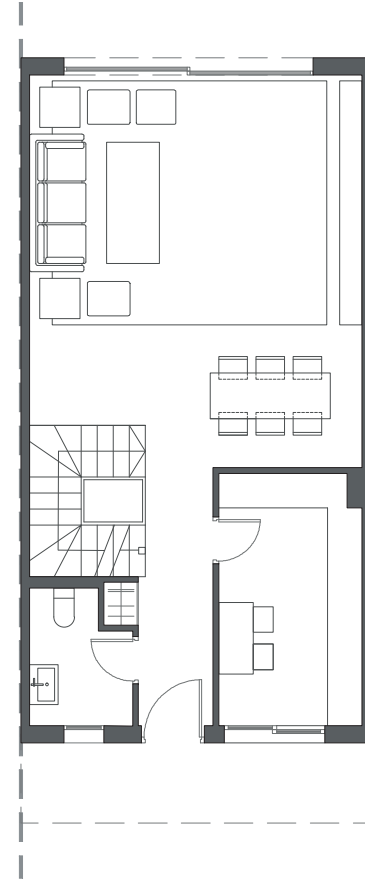


GROUND FLOOR A



GROUND FLOOR B



GROUND FLOOR C

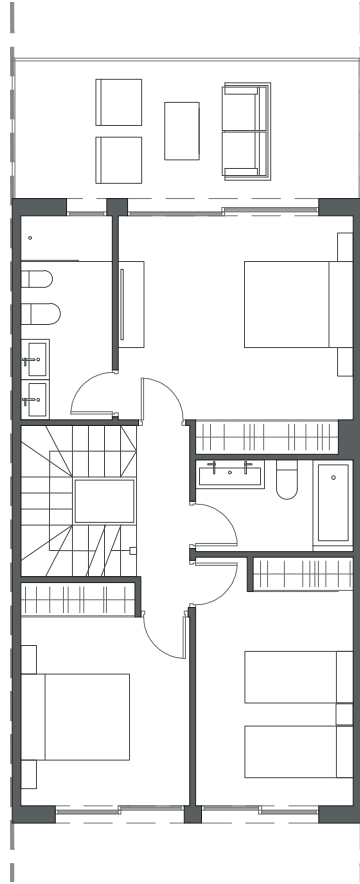
HOUSE 12 - BLOCK 2

TYPE 1-A - RIGHT

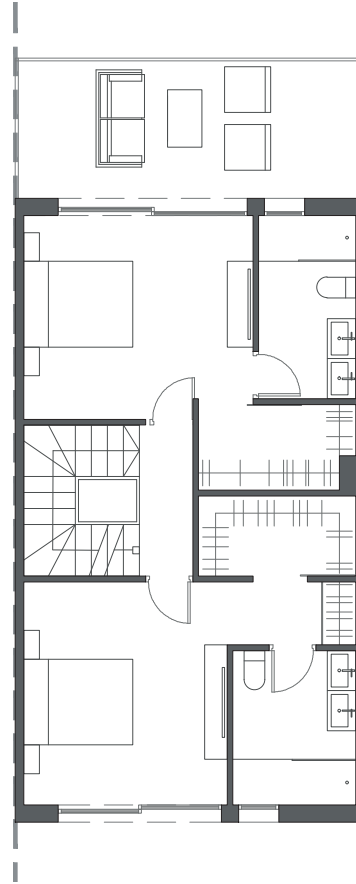


Interior view

LA VALVEGA
de La Cala



FIRST FLOOR A



FIRST FLOOR B



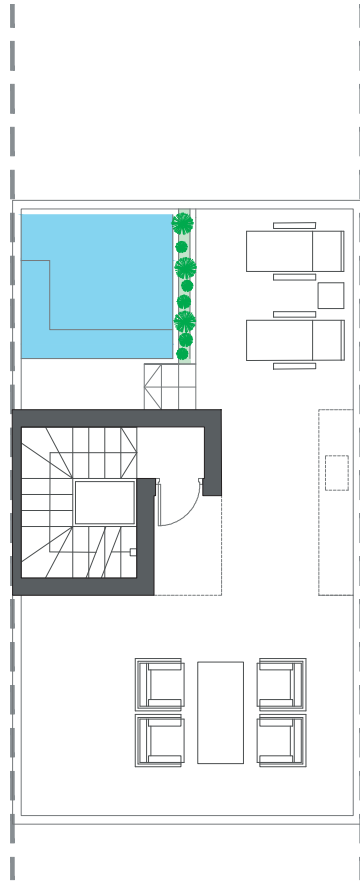
FIRST FLOOR C

HOUSE 12 - BLOCK 2

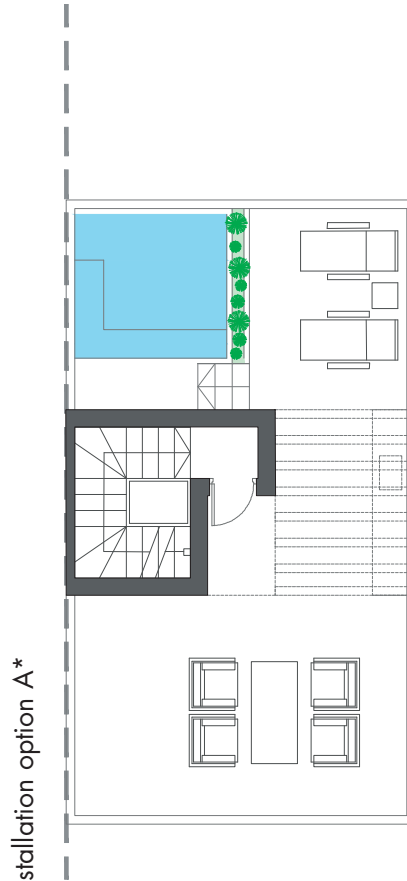
TYPE 1-A - RIGHT



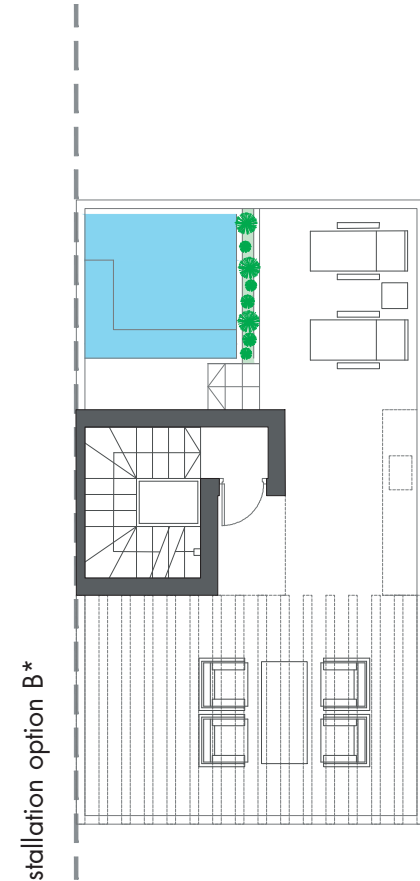
Interior view



ROOFTOP



ROOFTOP



ROOFTOP

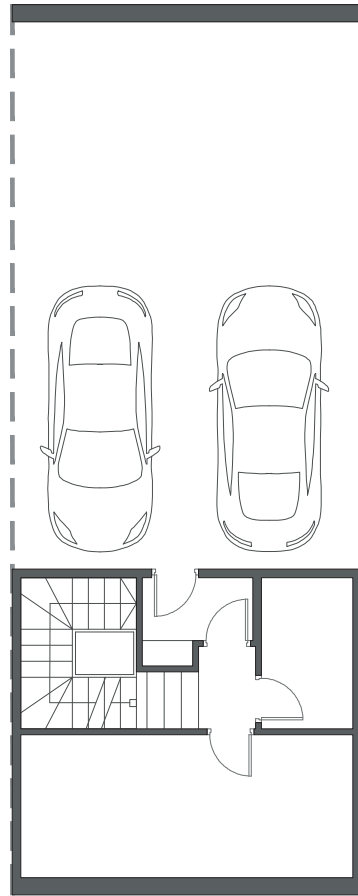
HOUSE 12 - BLOCK 2

TYPE 1-A - RIGHT

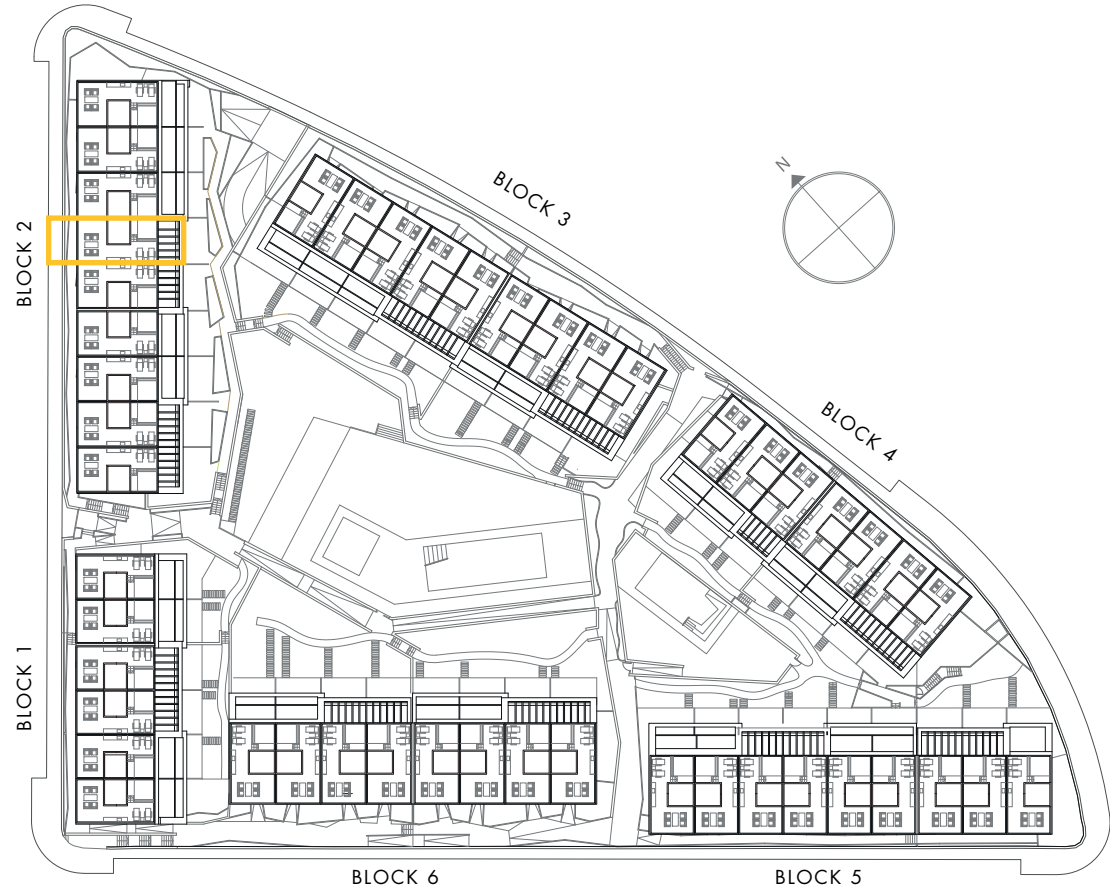
*These options only include the pre-installation for a pergola, which the client can install in the desired configuration.



Interior view

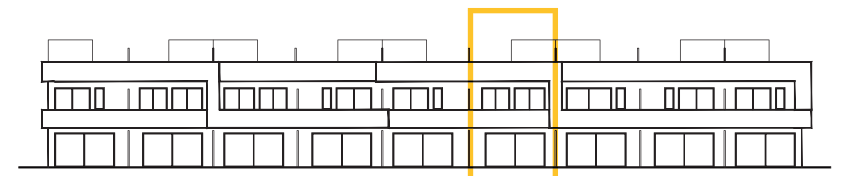


BASEMENT



HOUSE 12 - BLOCK 2

TYPE 1-A - RIGHT



Interior view