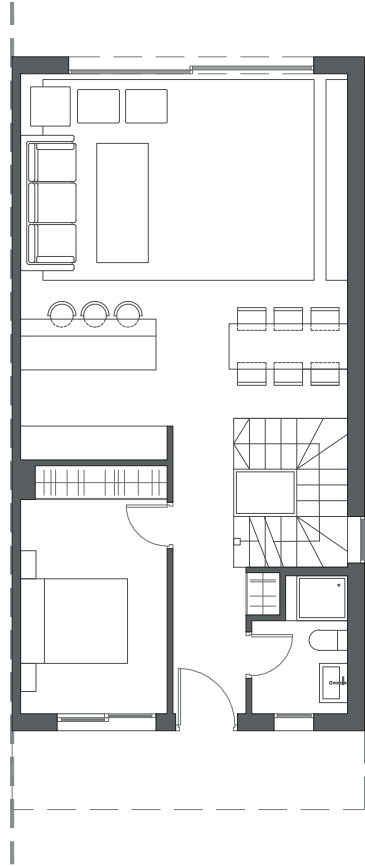
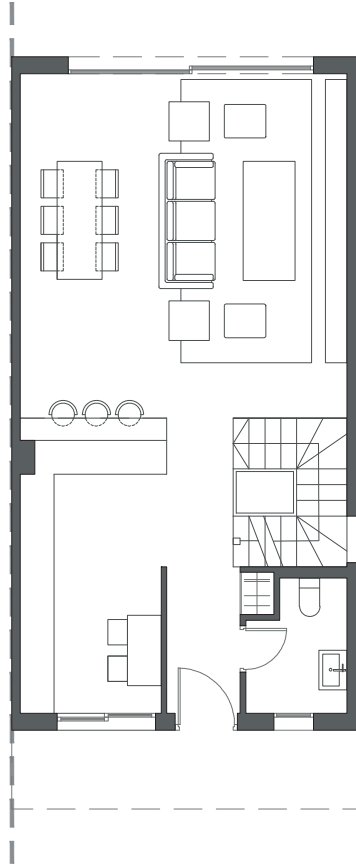


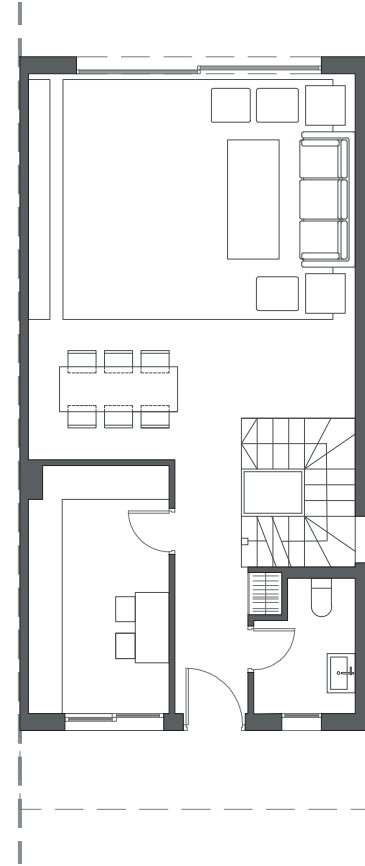

LA VALVEGA
de La Cala



GROUND FLOOR A



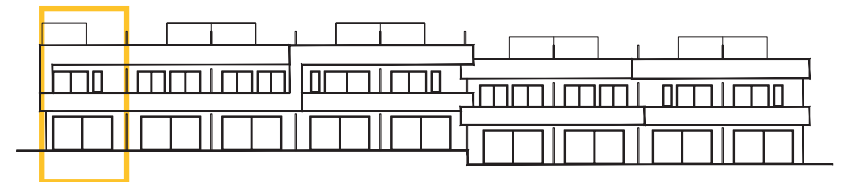
GROUND FLOOR B



GROUND FLOOR C

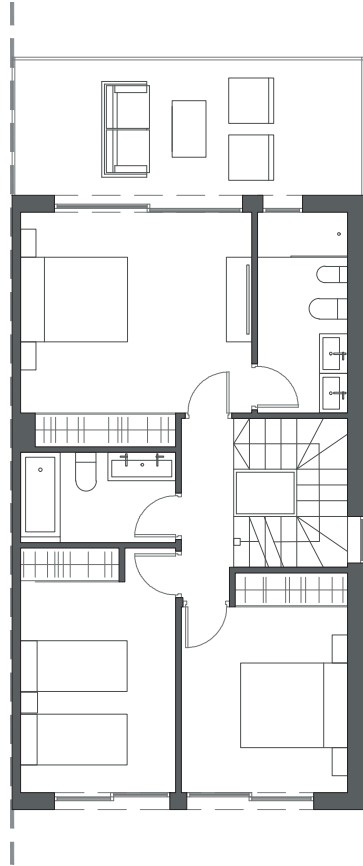
HOUSE 16 - BLOCK 3

TYPE 1-A - LEFT C

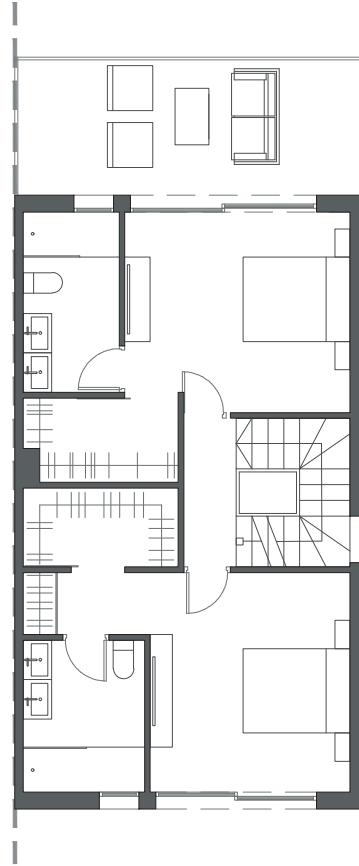


Interior view

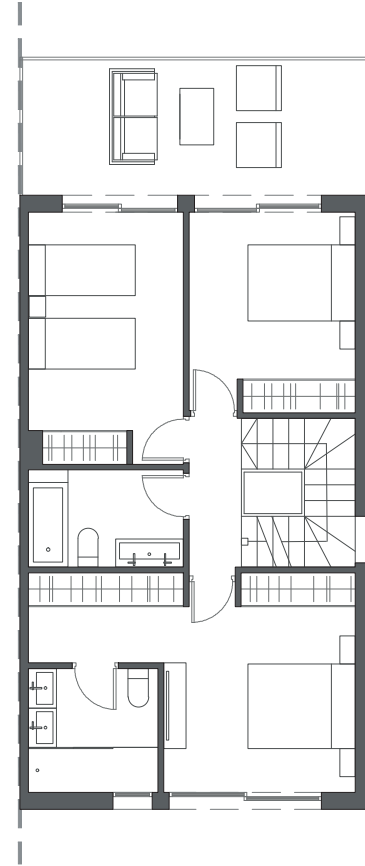
LA VALVEGA
de La Cala



FIRST FLOOR A



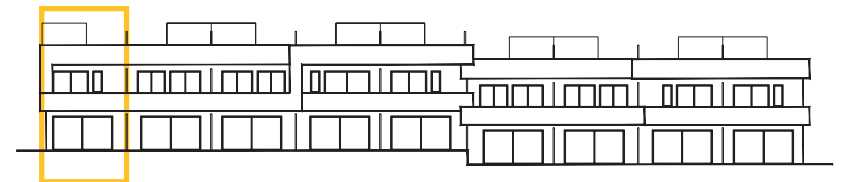
FIRST FLOOR B



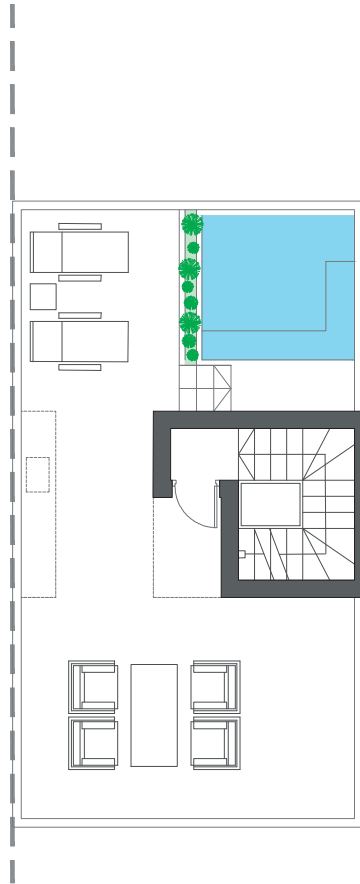
FIRST FLOOR C

HOUSE 16 - BLOCK 3

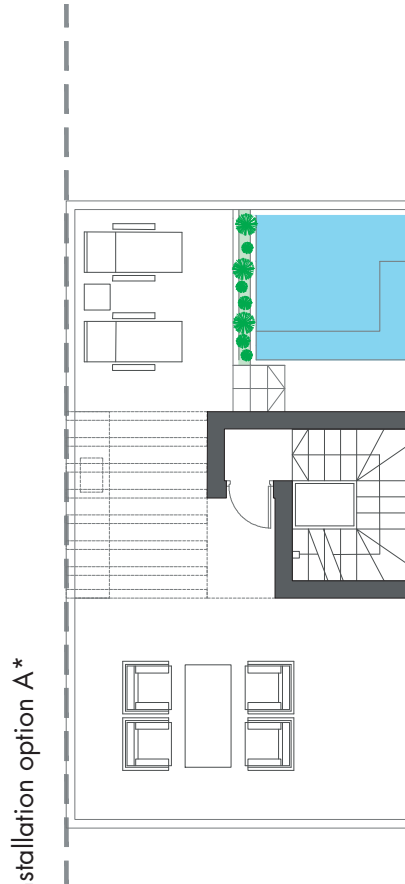
TYPE 1-A - LEFT C



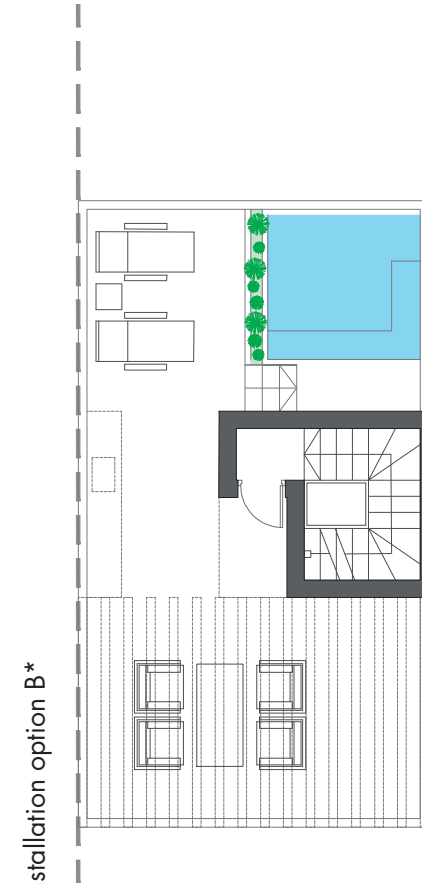
Interior view



ROOFTOP



ROOFTOP

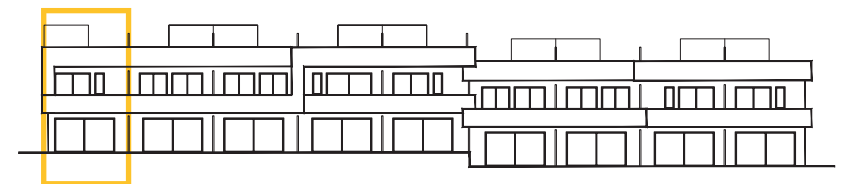


ROOFTOP

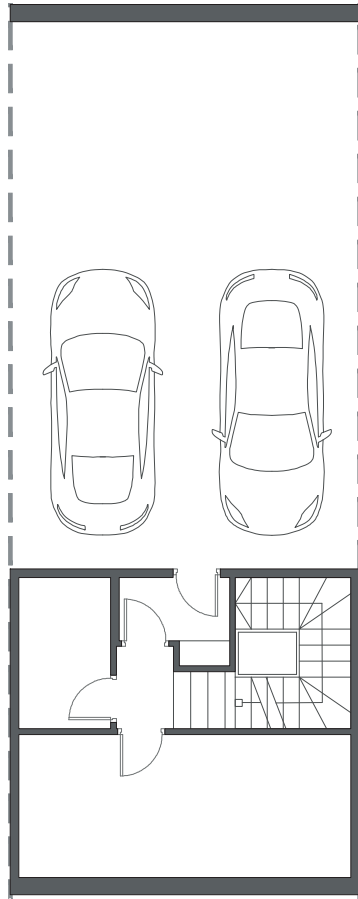
HOUSE 16 - BLOCK 3

TYPE 1-A - LEFT C

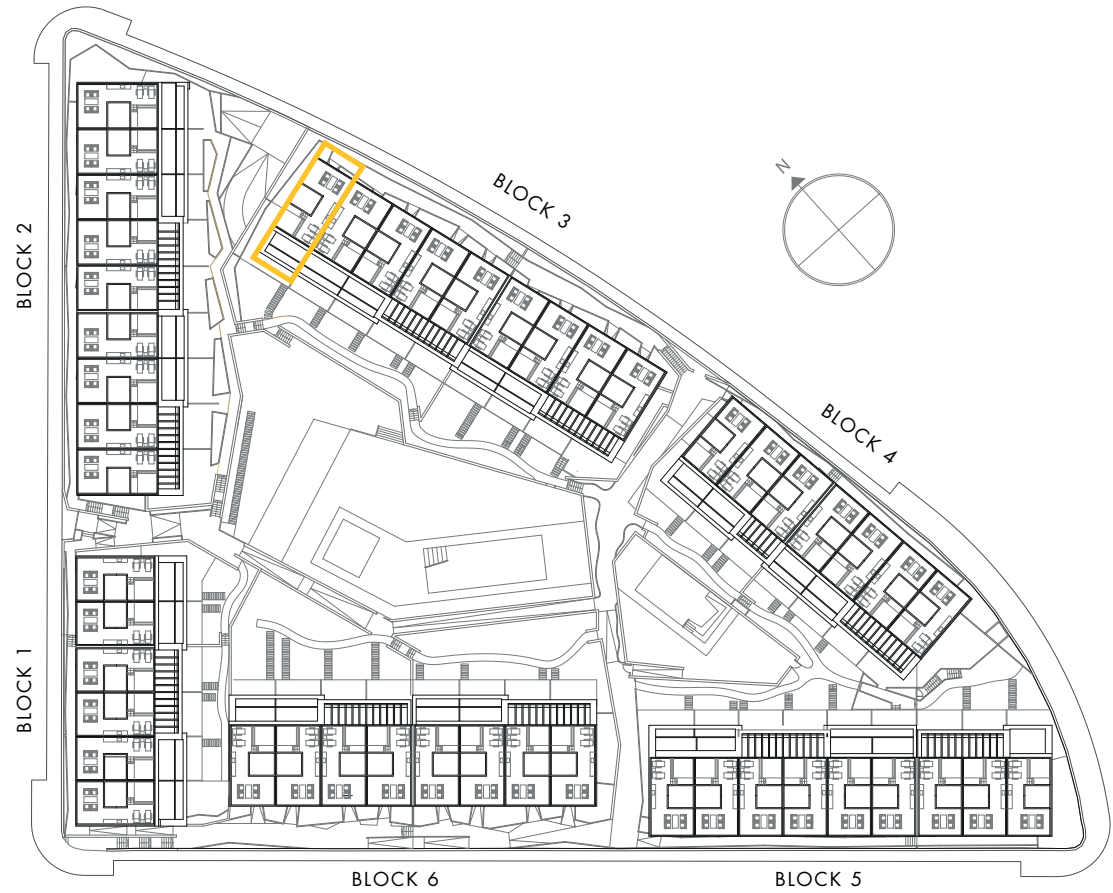
*These options only include the pre-installation for a pergola, which the client can install in the desired configuration.



Interior view

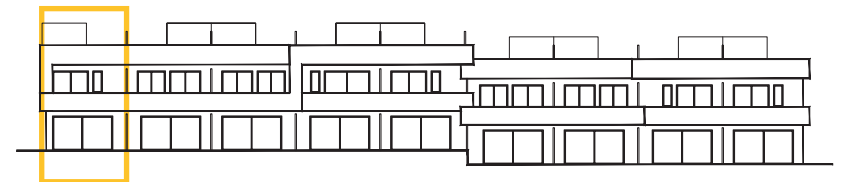


BASEMENT



HOUSE 16 - BLOCK 3

TYPE 1-A - LEFT C



Interior view