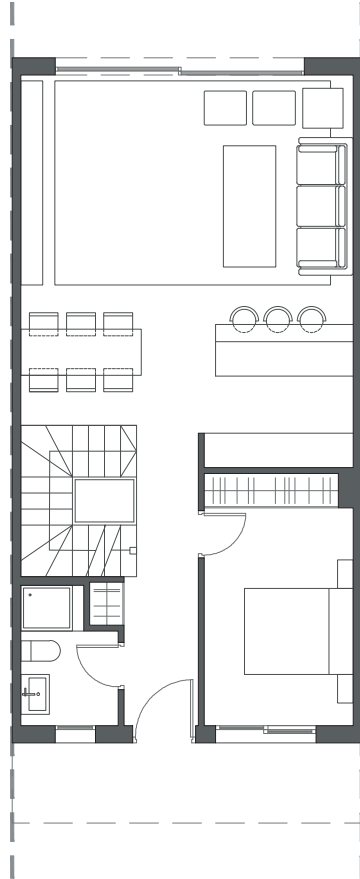
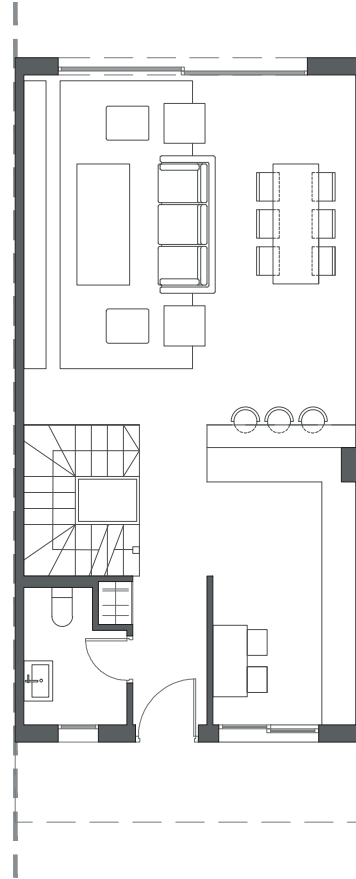


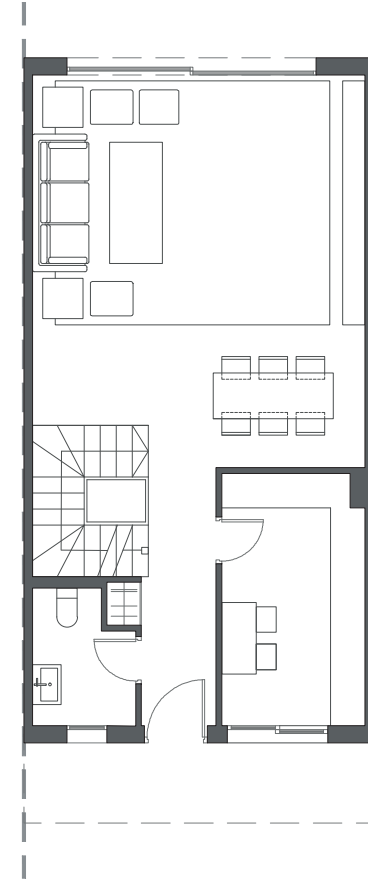
  
LA VALVEGA  
de La Cala



GROUND FLOOR A



GROUND FLOOR B



GROUND FLOOR C

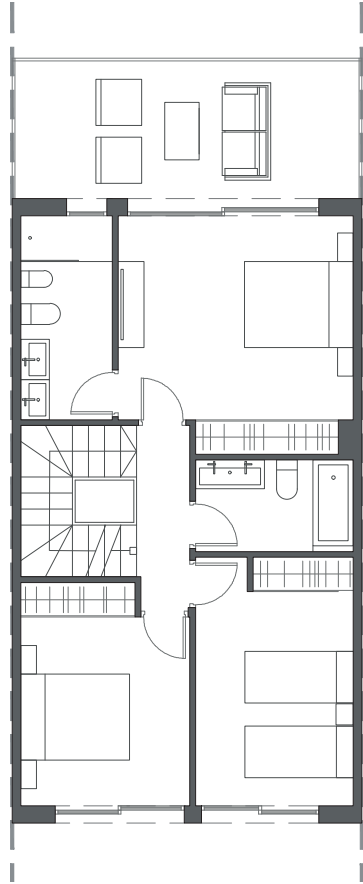
HOUSE 19 - BLOCK 3

TYPE 1-A - RIGHT

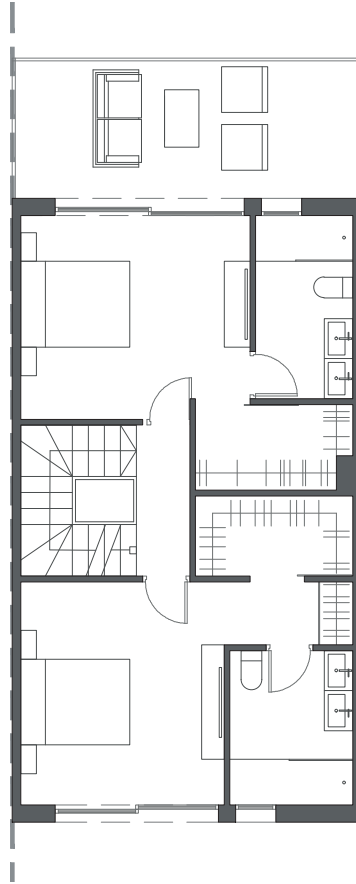


Interior view

  
LA VALVEGA  
de La Cala



FIRST FLOOR A



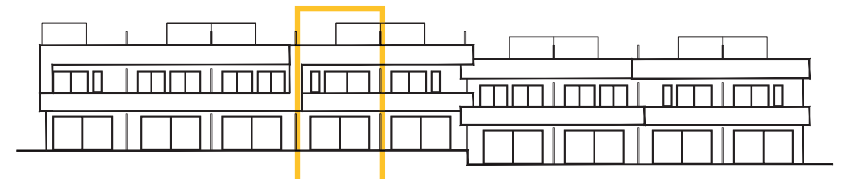
FIRST FLOOR B



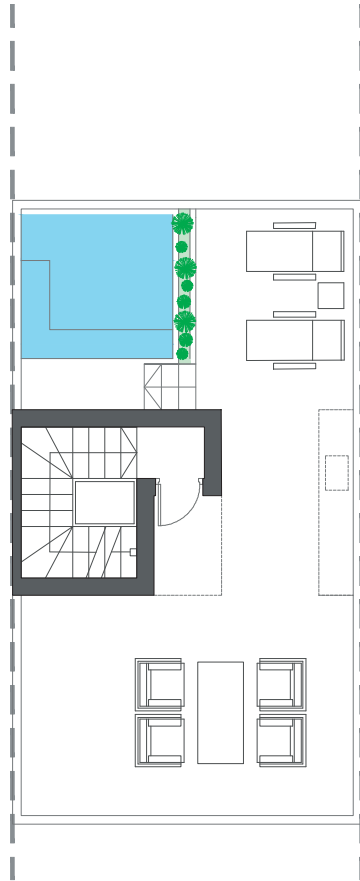
FIRST FLOOR C

HOUSE 19 - BLOCK 3

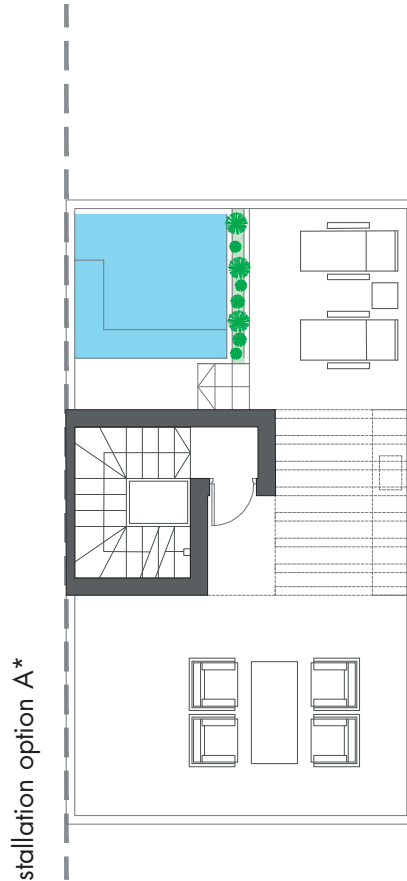
TYPE 1-A - RIGHT



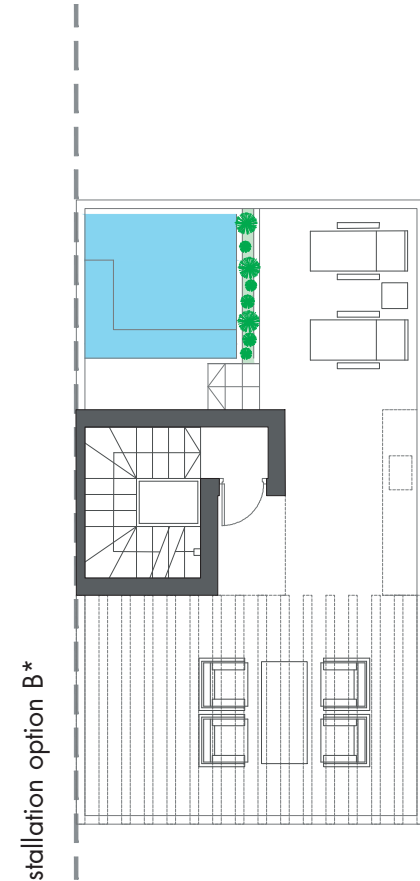
Interior view



ROOFTOP



ROOFTOP



ROOFTOP

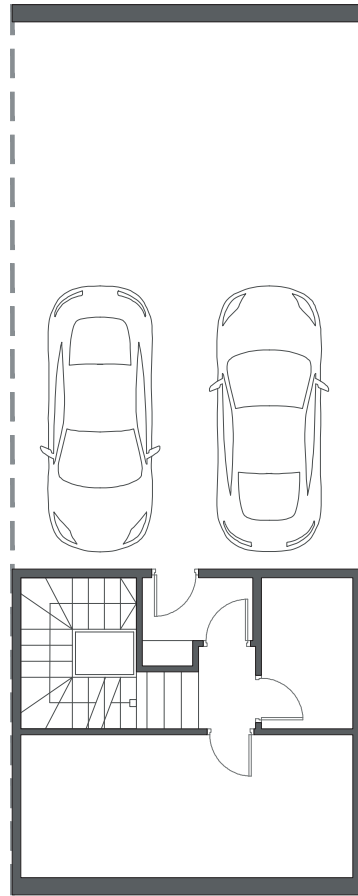
HOUSE 19 - BLOCK 3

TYPE 1-A - RIGHT

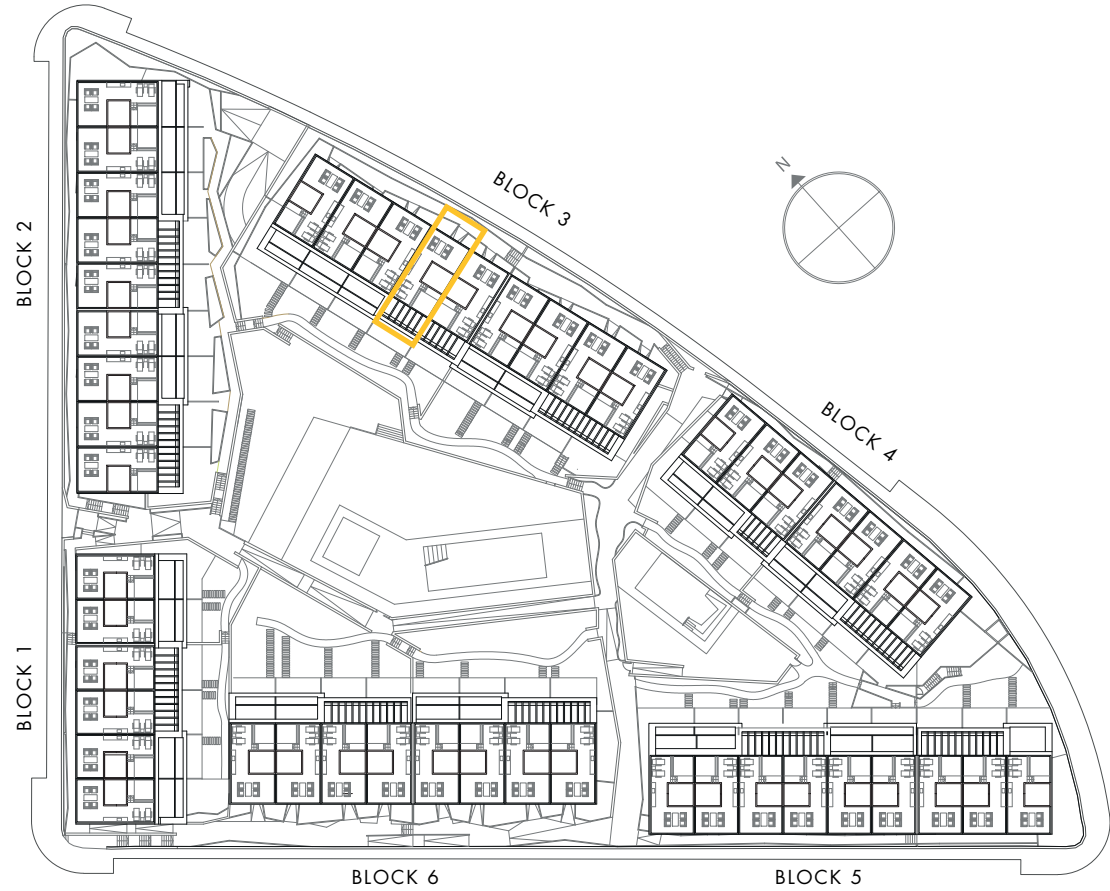
\*These options only include the pre-installation for a pergola, which the client can install in the desired configuration.



Interior view



BASEMENT



HOUSE 19 - BLOCK 3

TYPE 1-A - RIGHT



Interior view