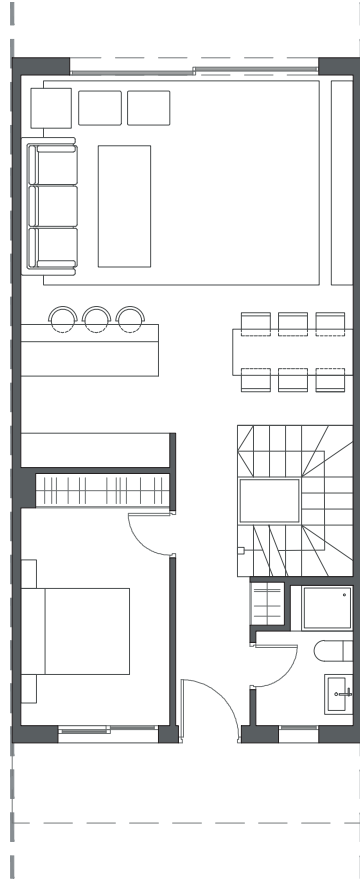
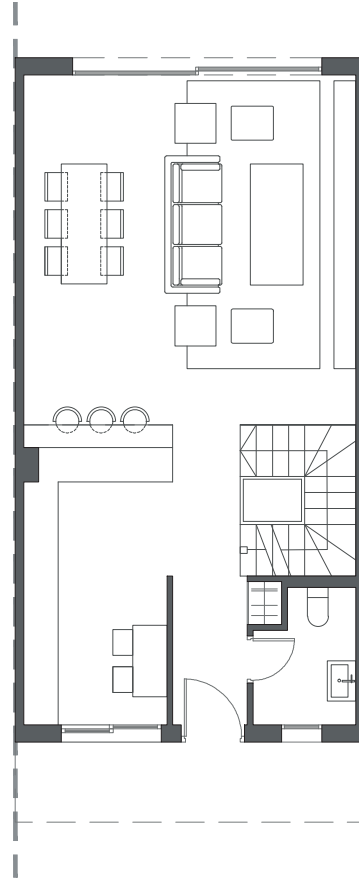




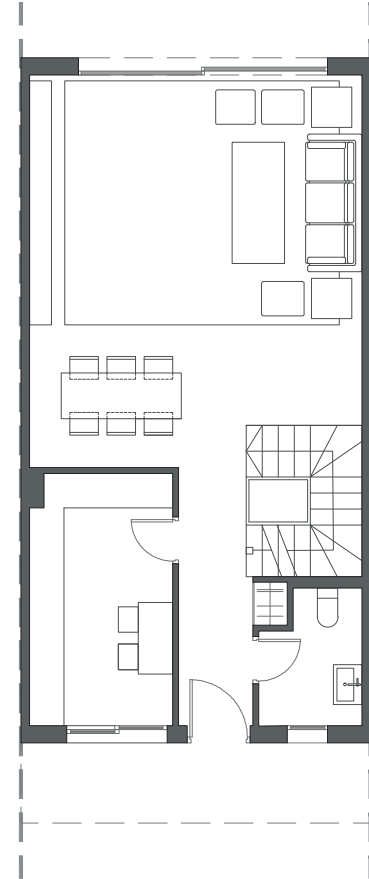
LA VALVEGA
de La Cala



GROUND FLOOR A



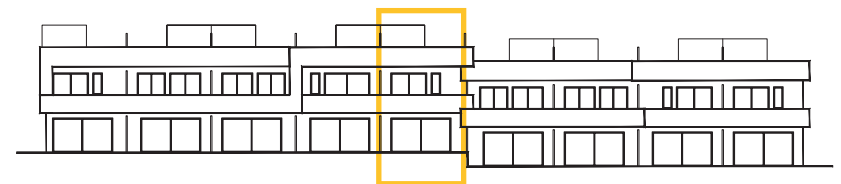
GROUND FLOOR B



GROUND FLOOR C

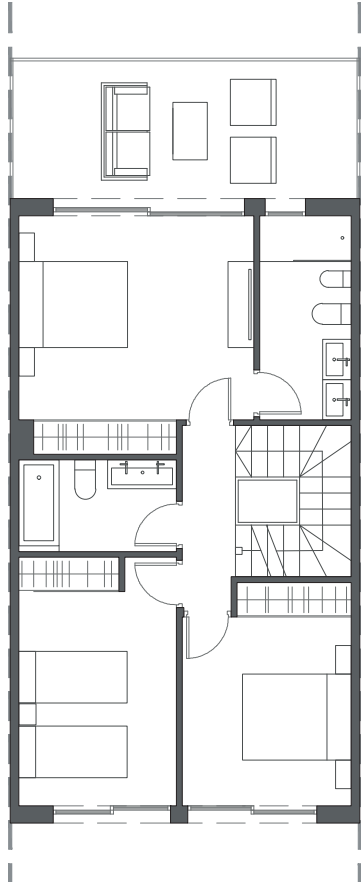
HOUSE 20 - BLOCK 3

TYPE 1-A - LEFT

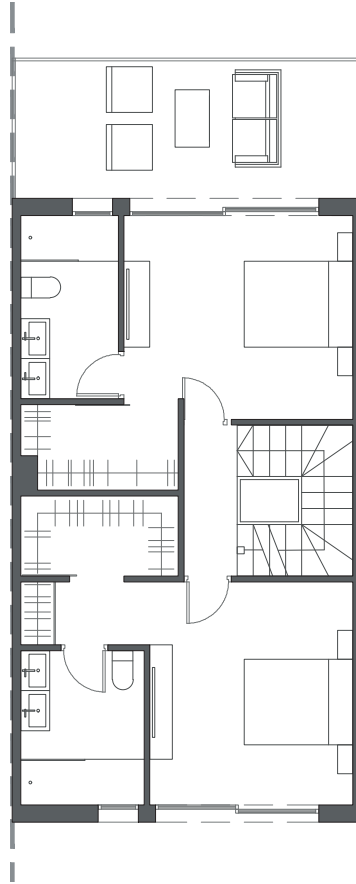


Interior view

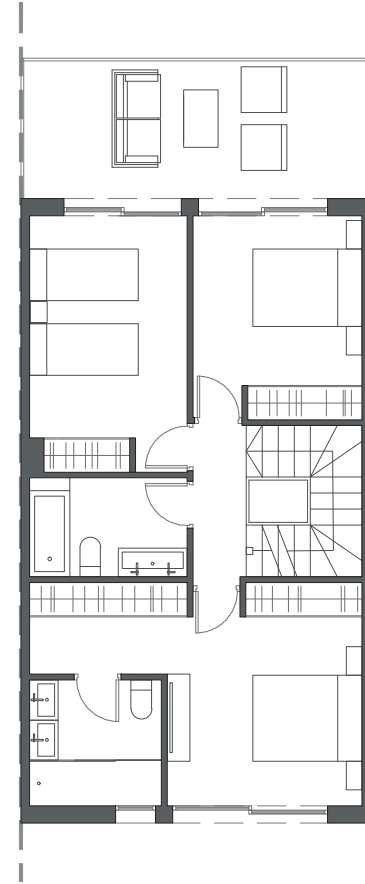

LA VALVEGA
de La Cala



FIRST FLOOR A



FIRST FLOOR B



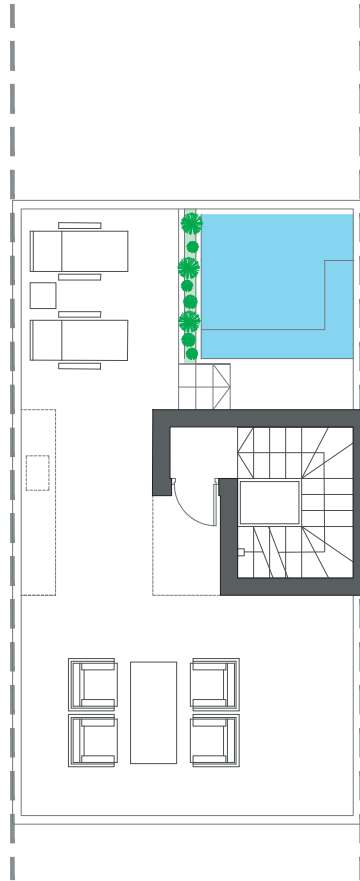
FIRST FLOOR C

HOUSE 20 - BLOCK 3

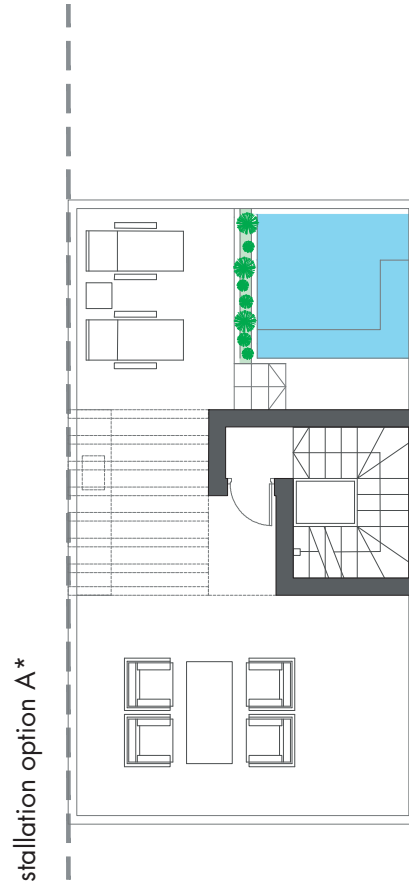
TYPE 1-A - LEFT



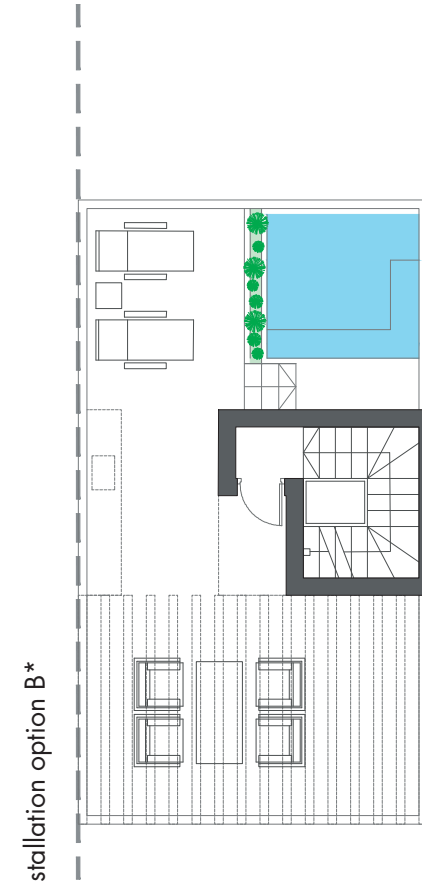
Interior view



ROOFTOP



ROOFTOP



ROOFTOP

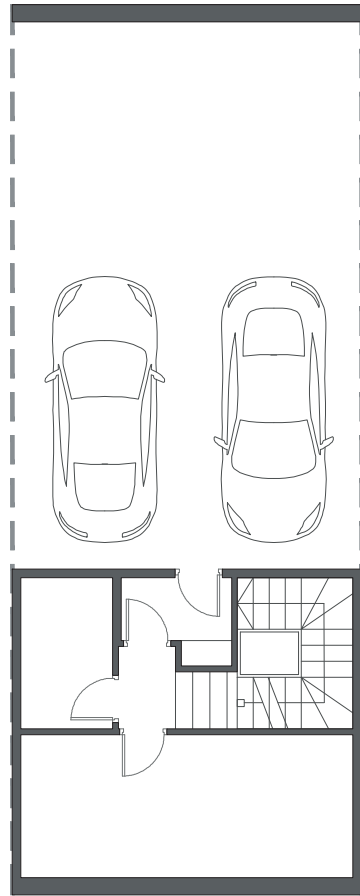
HOUSE 20 - BLOCK 3

TYPE 1-A - LEFT

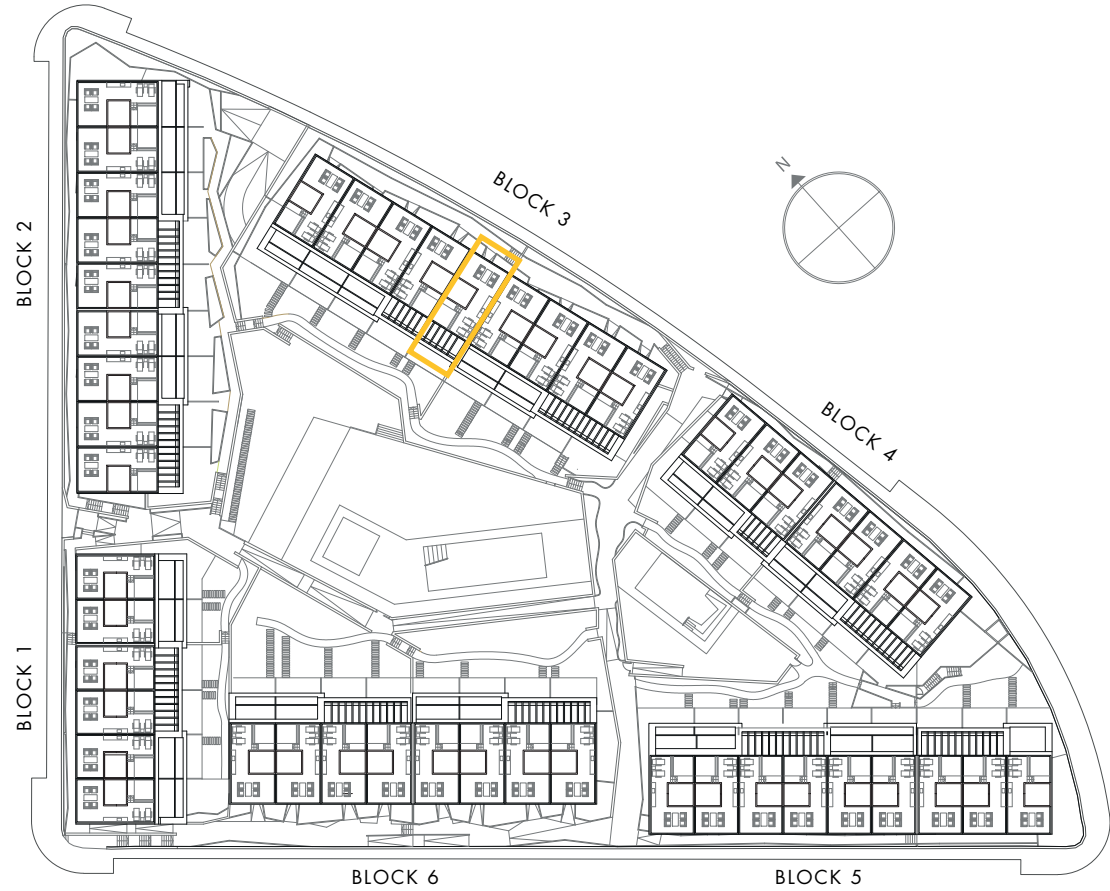
*These options only include the pre-installation for a pergola, which the client can install in the desired configuration.



Interior view



BASEMENT



HOUSE 20 - BLOCK 3

TYPE 1-A - LEFT



Interior view