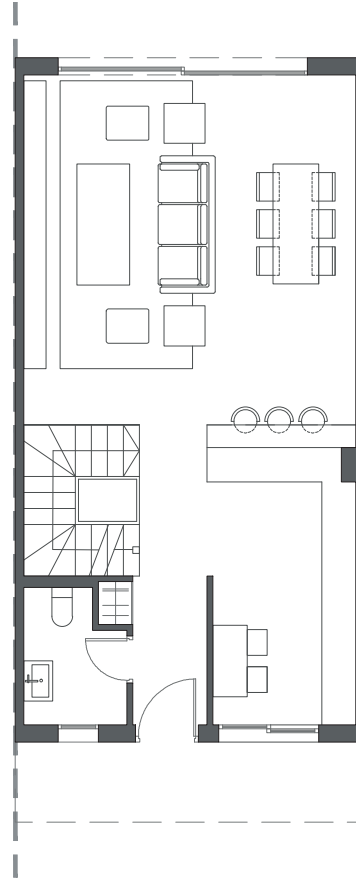
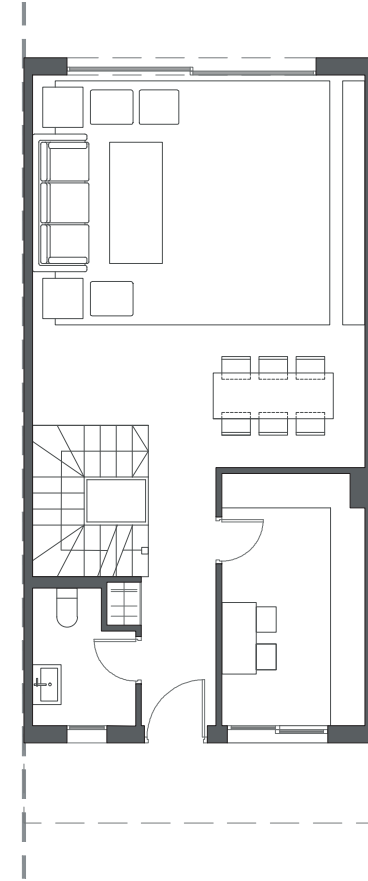


GROUND FLOOR A



GROUND FLOOR B



GROUND FLOOR C

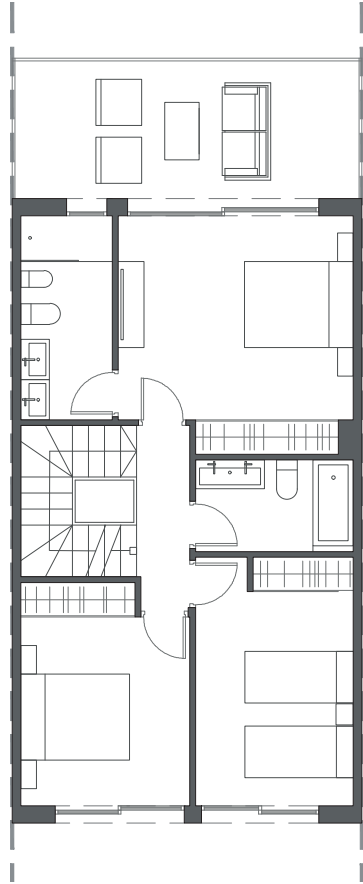
HOUSE 21 - BLOCK 3

TYPE 1-A - RIGHT

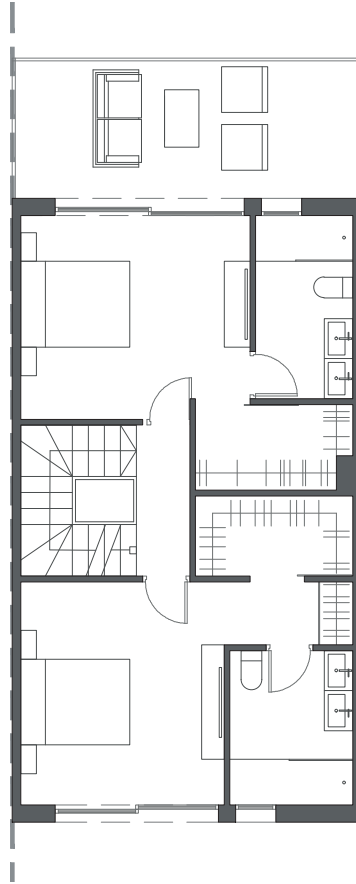


Interior view


LA VALVEGA
de La Cala



FIRST FLOOR A



FIRST FLOOR B



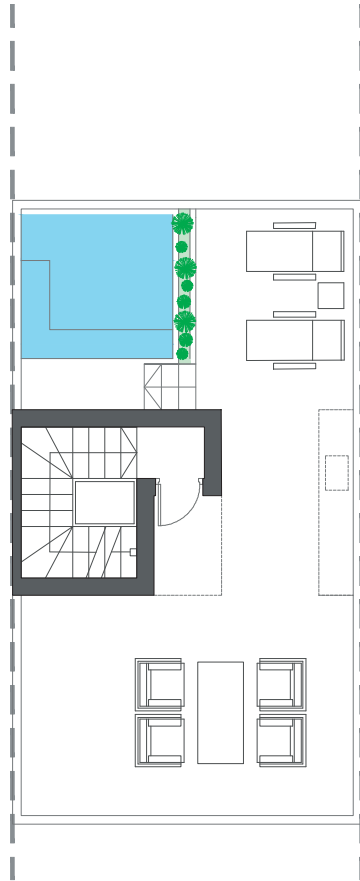
FIRST FLOOR C

HOUSE 21 - BLOCK 3

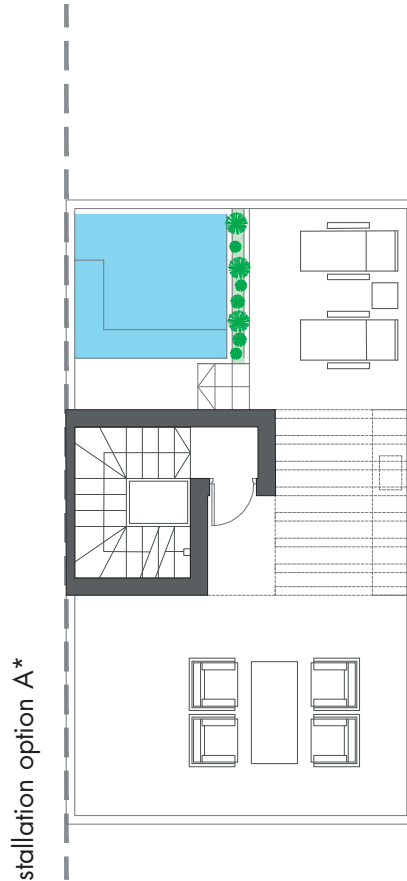
TYPE 1-A - RIGHT



Interior view

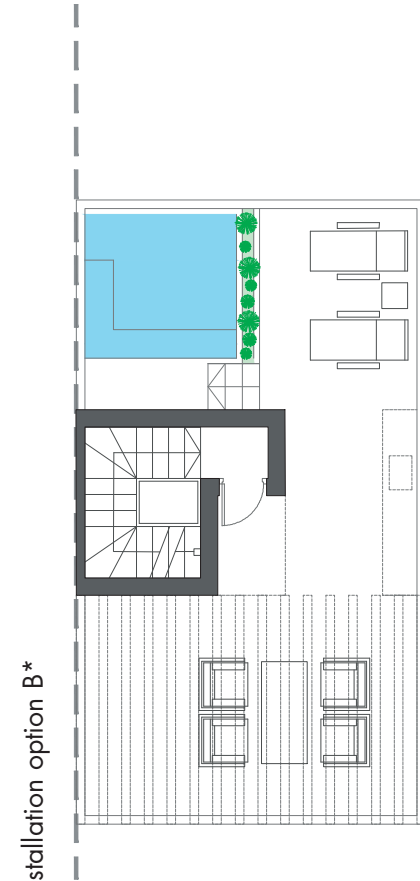


ROOFTOP



Pre-installation option A*

ROOFTOP



Pre-installation option B*

ROOFTOP

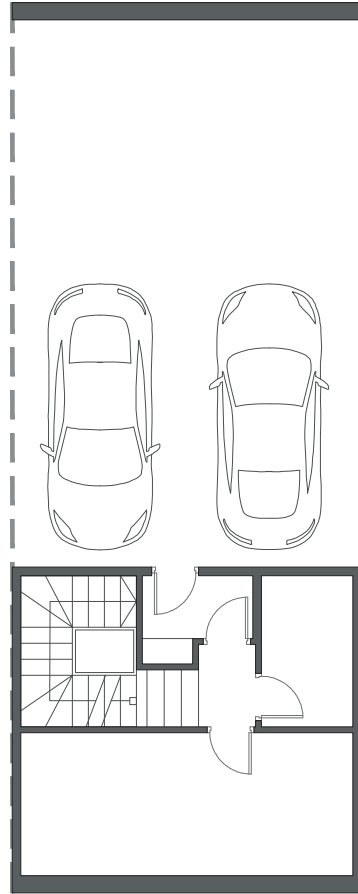
HOUSE 21 - BLOCK 3

TYPE 1-A - RIGHT

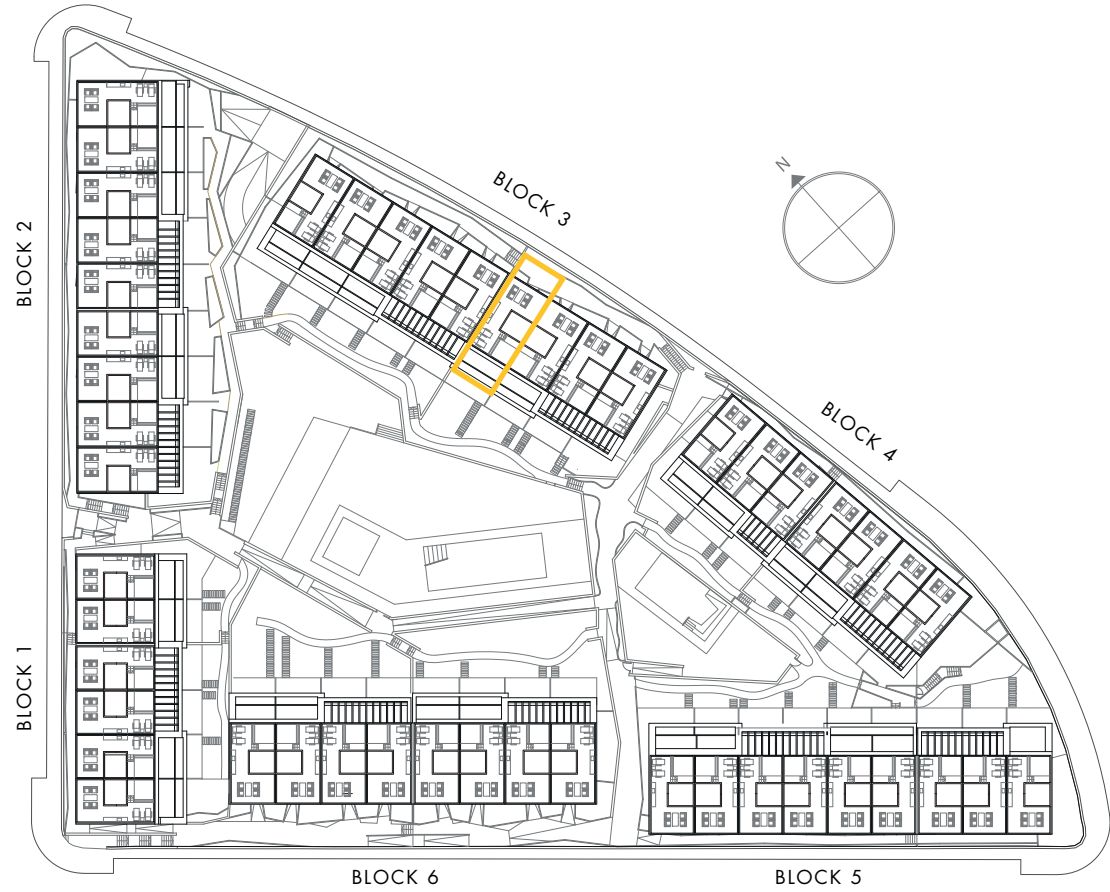
*These options only include the pre-installation for a pergola, which the client can install in the desired configuration.



Interior view

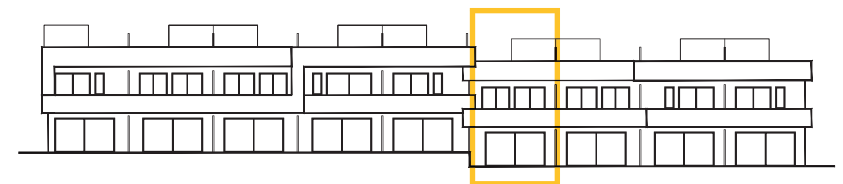


BASEMENT



HOUSE 21 - BLOCK 3

TYPE 1-A - RIGHT



Interior view