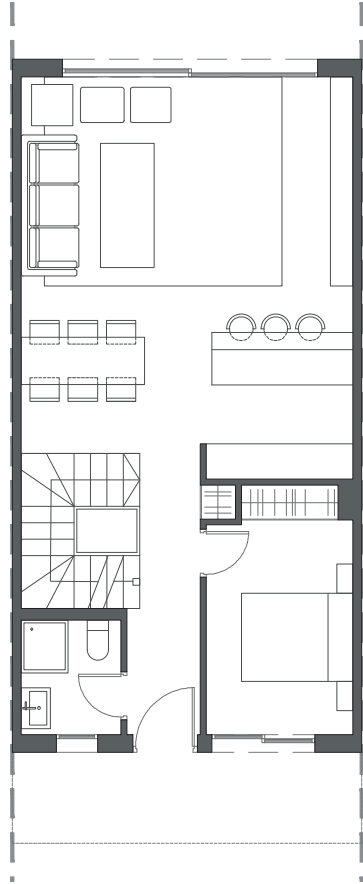
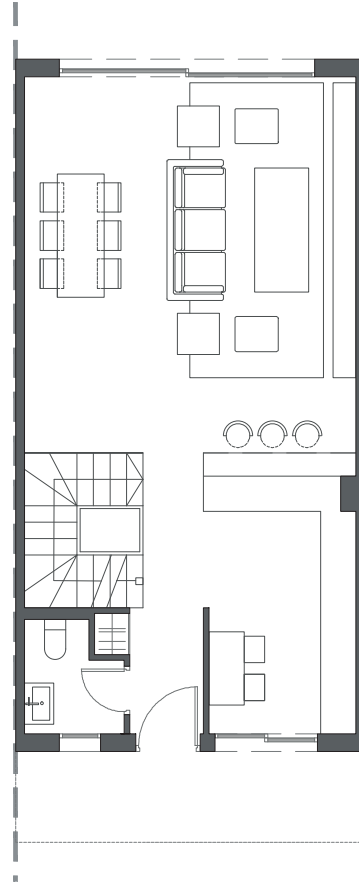


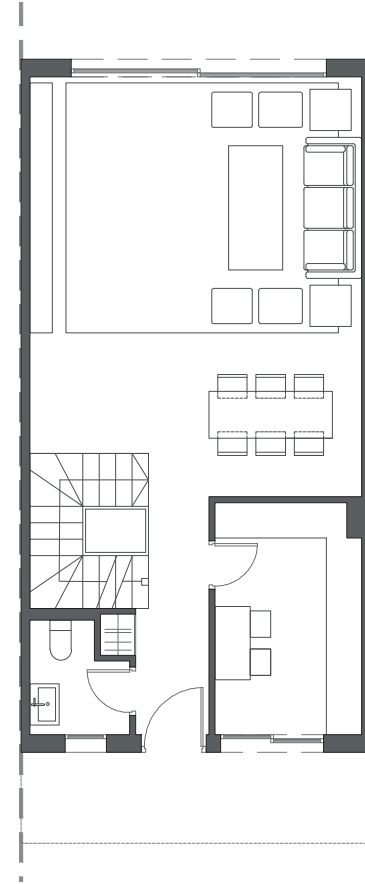

LA VALVEGA
de La Cala



GROUND FLOOR A



GROUND FLOOR B



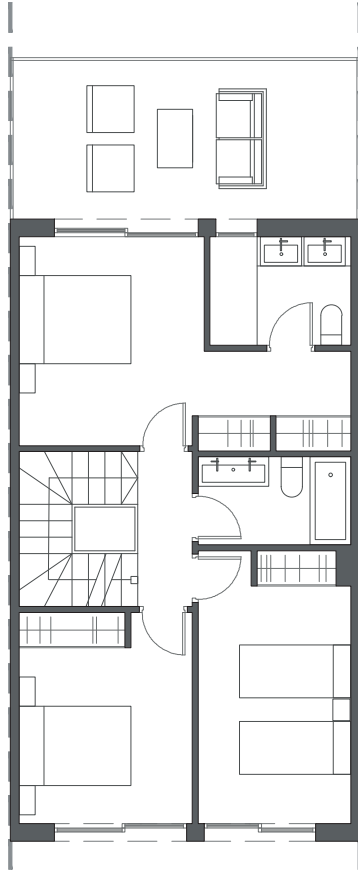
GROUND FLOOR C

HOUSE 28 - BLOCK 4

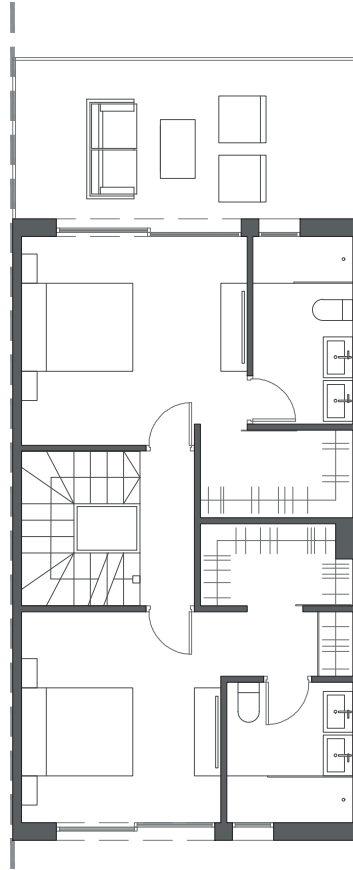
TYPE 2 - RIGHT



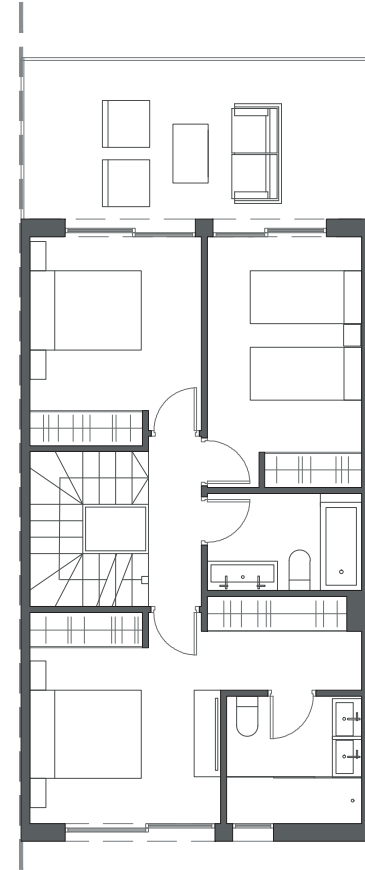
Interior view



FIRST FLOOR A



FIRST FLOOR B



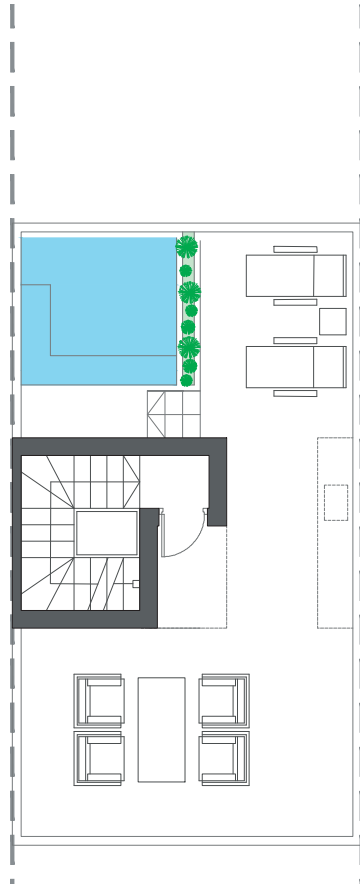
FIRST FLOOR C

HOUSE 28 - BLOCK 4

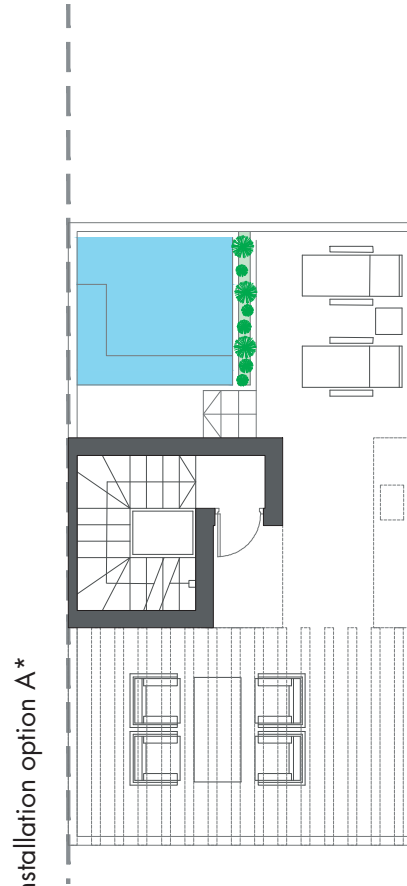
TYPE 2 - RIGHT



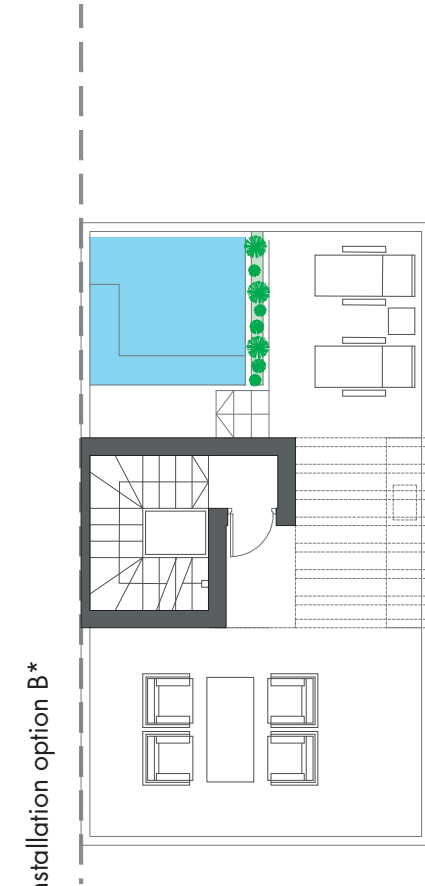
Interior view



ROOFTOP



ROOFTOP



ROOFTOP

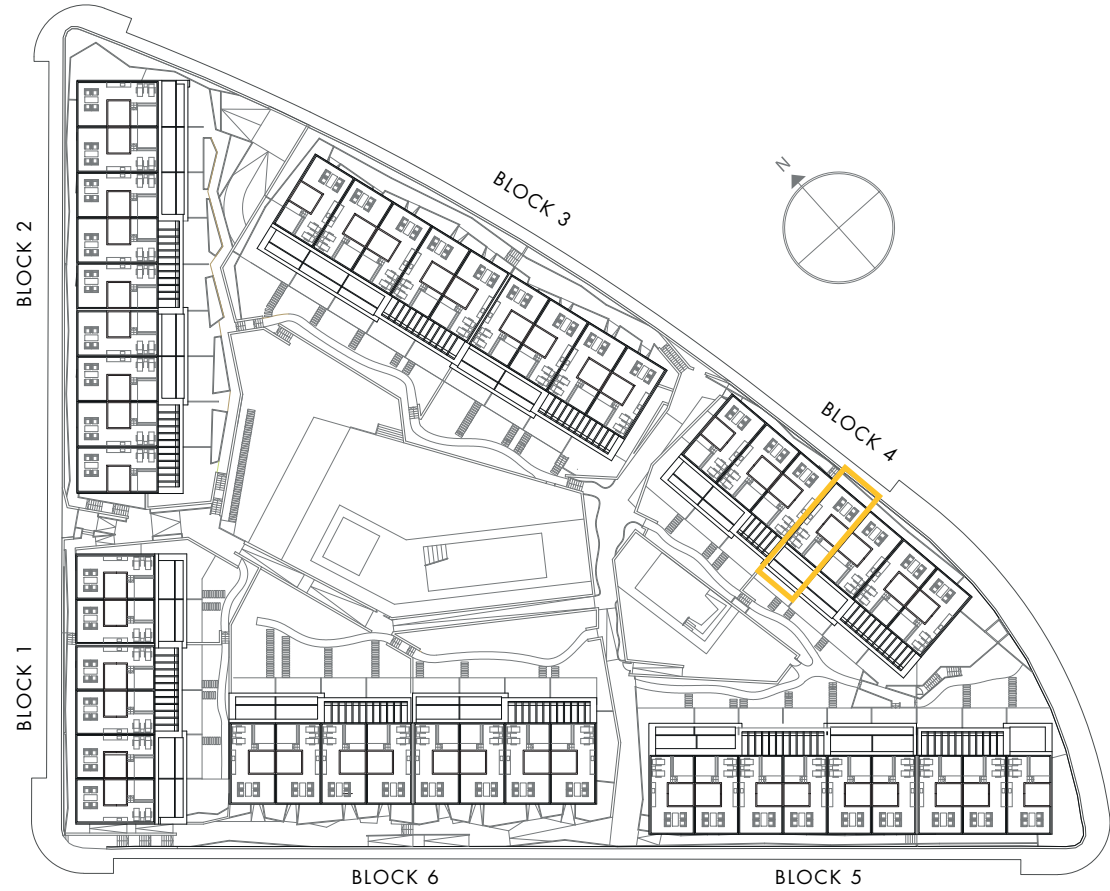
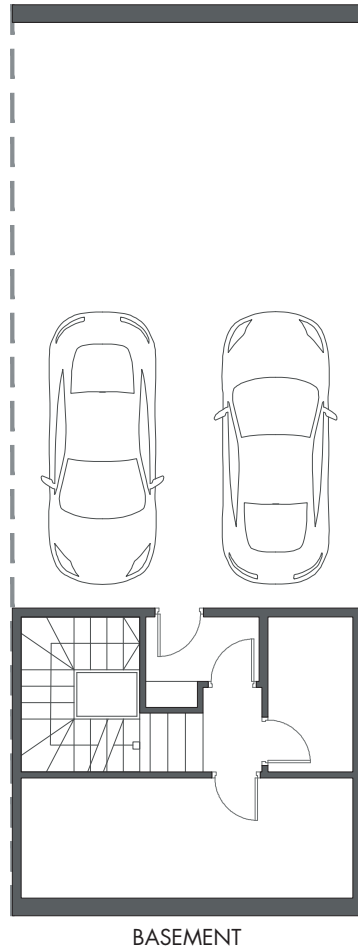
HOUSE 28 - BLOCK 4

TYPE 2 - RIGHT

*These options only include the pre-installation for a pergola, which the client can install in the desired configuration.



Interior view



HOUSE 28 - BLOCK 4

TYPE 2 - RIGHT

