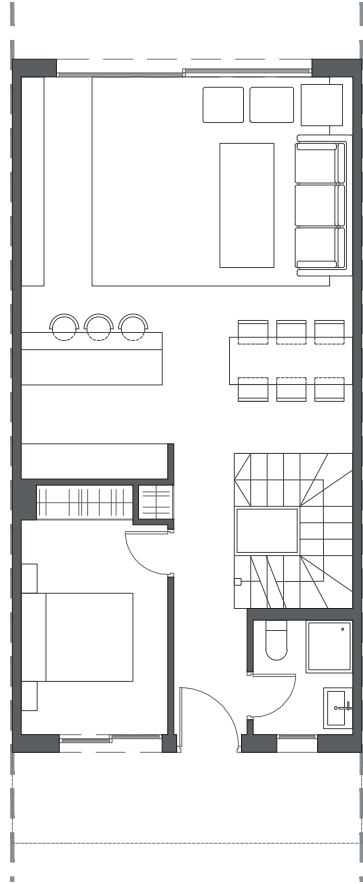
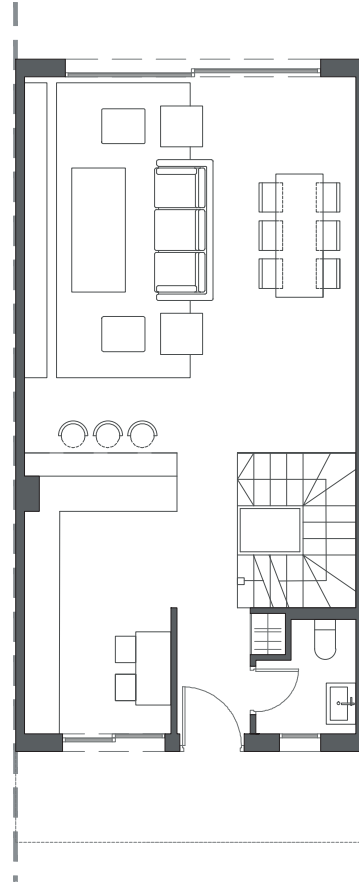


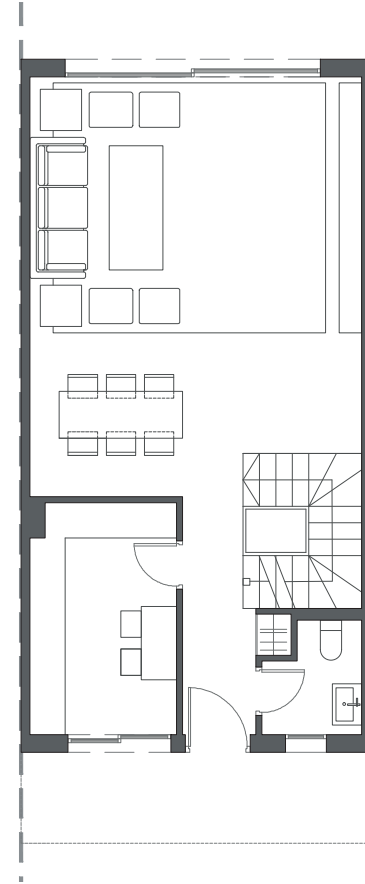
LA VALVEGA
de La Cala



GROUND FLOOR A



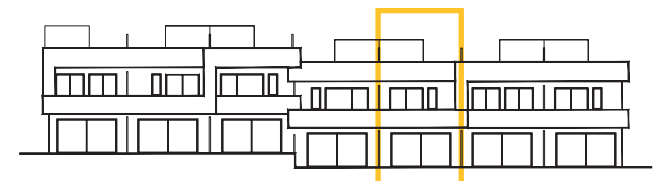
GROUND FLOOR B



GROUND FLOOR C

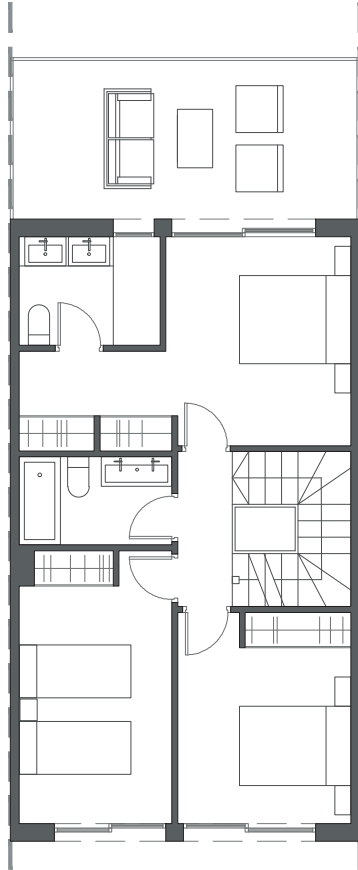
HOUSE 29 - BLOCK 4

TYPE 2 - LEFT

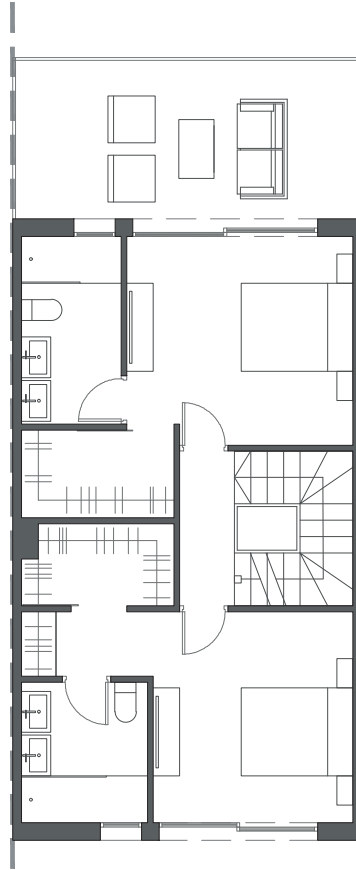


Interior view

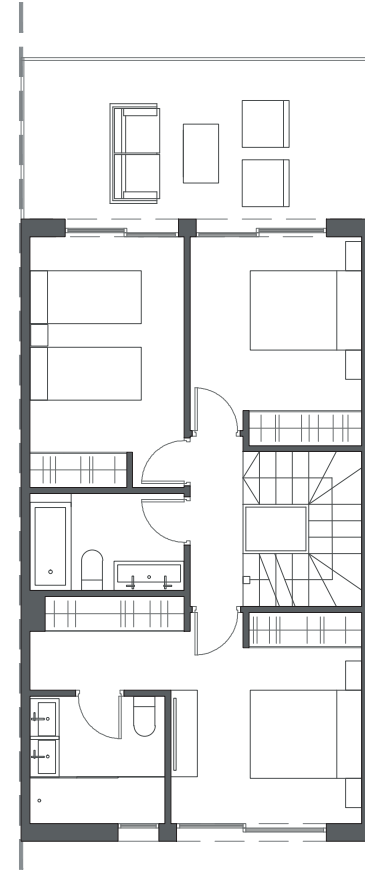
LA VALVEGA
de La Cala



FIRST FLOOR A



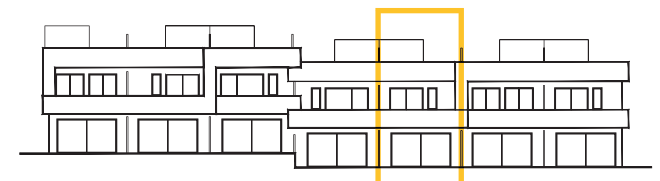
FIRST FLOOR B



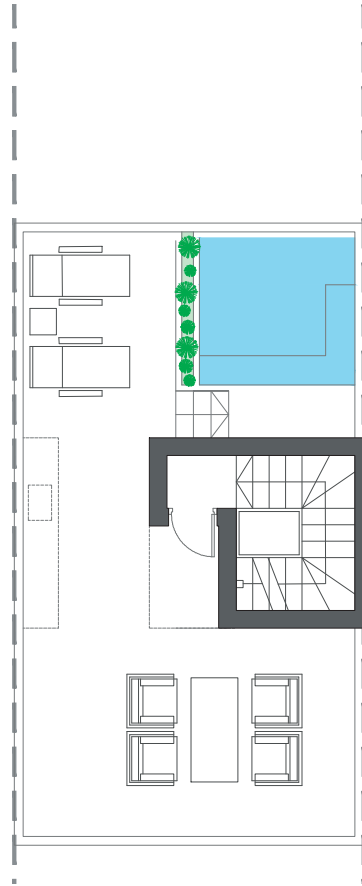
FIRST FLOOR C

HOUSE 29 - BLOCK 4

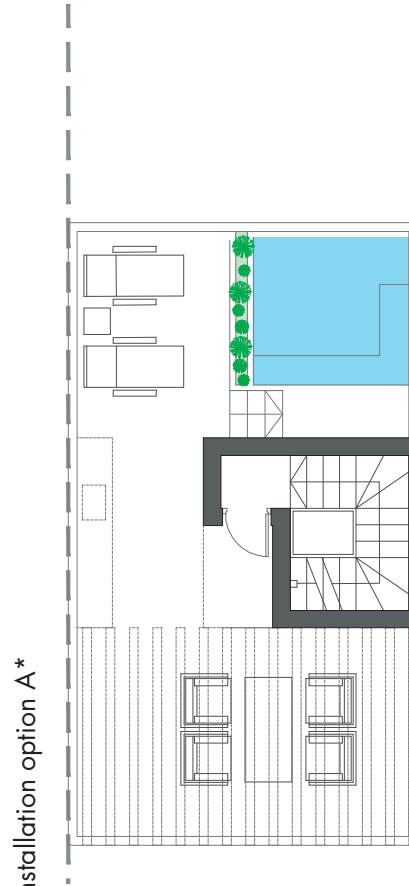
TYPE 2 - LEFT



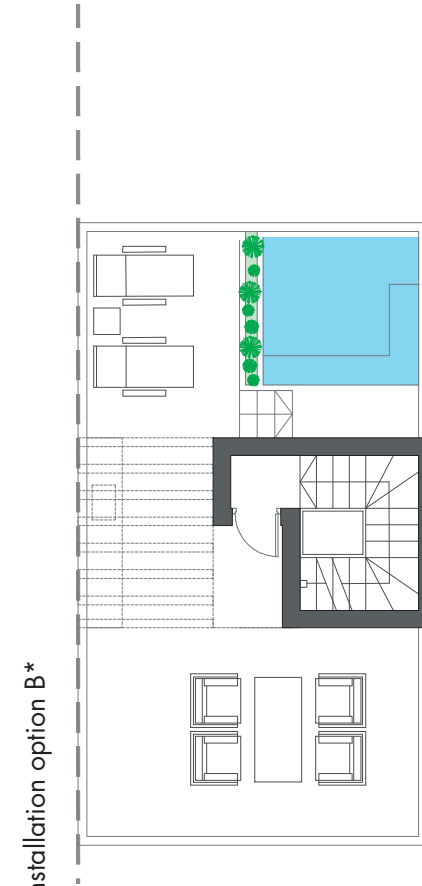
Interior view



ROOFTOP



ROOFTOP



ROOFTOP

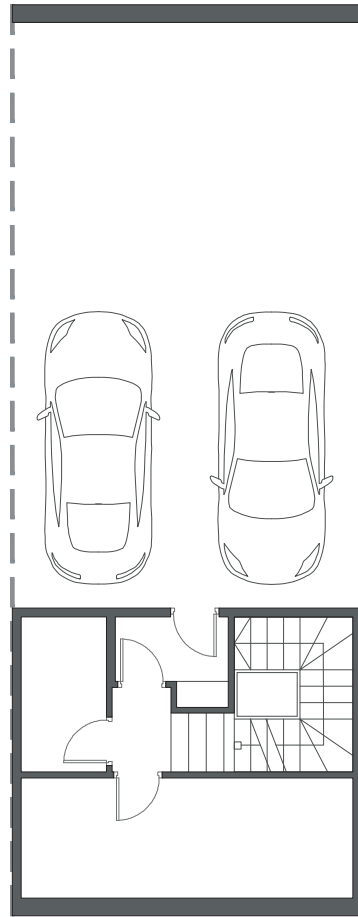
HOUSE 29 - BLOCK 4

TYPE 2 - LEFT

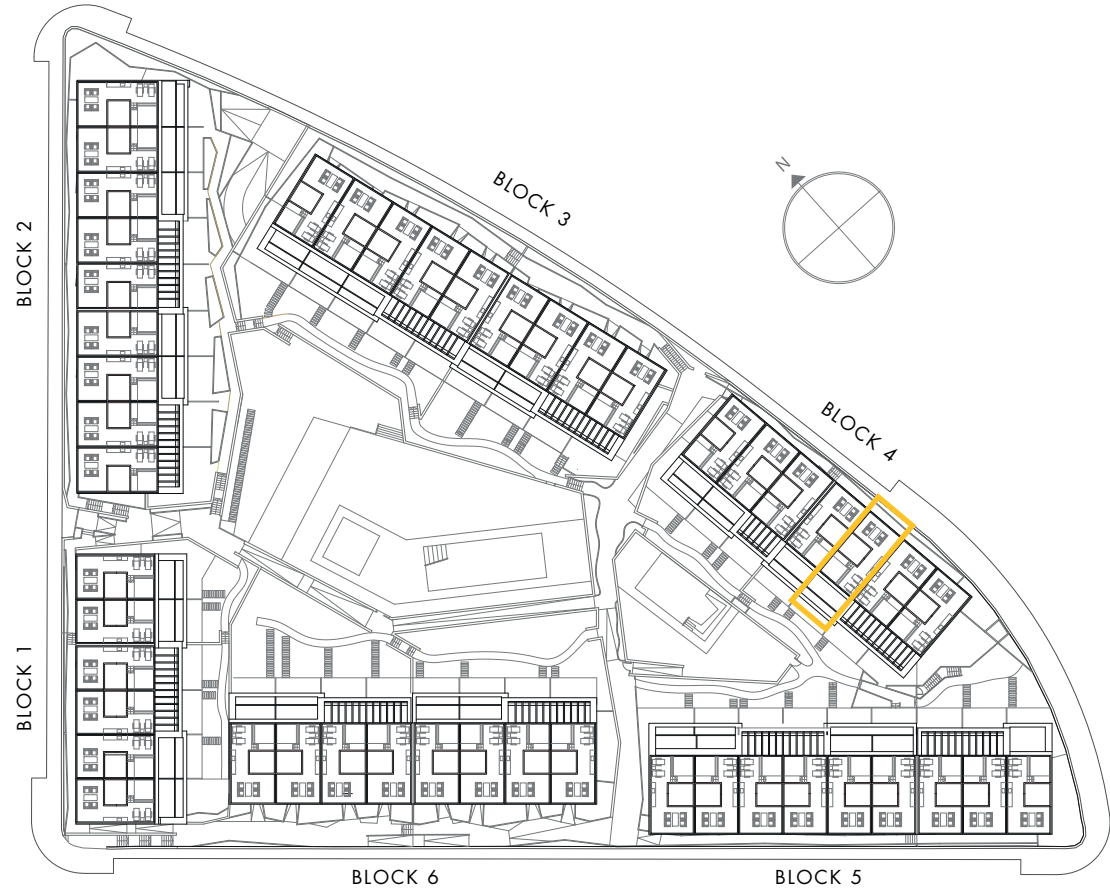
*These options only include the pre-installation for a pergola, which the client can install in the desired configuration.



Interior view



BASEMENT

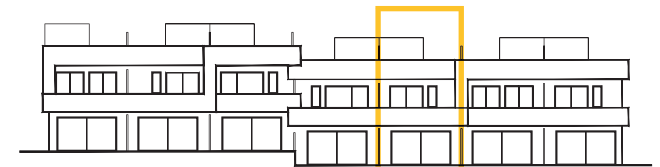


BLOCK 6

BLOCK 5

HOUSE 29 - BLOCK 4

TYPE 2 - LEFT



Interior view