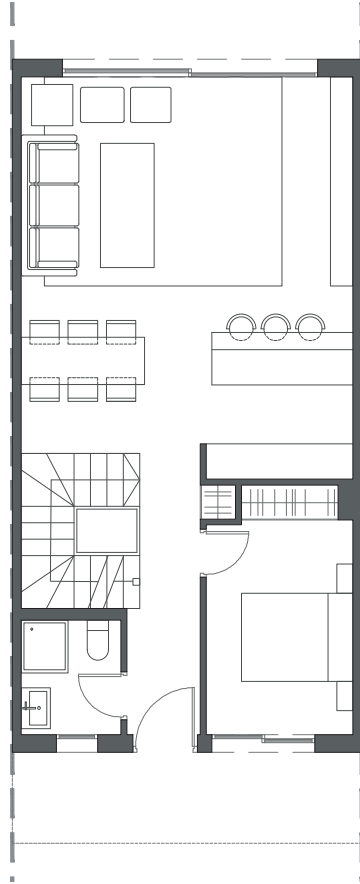
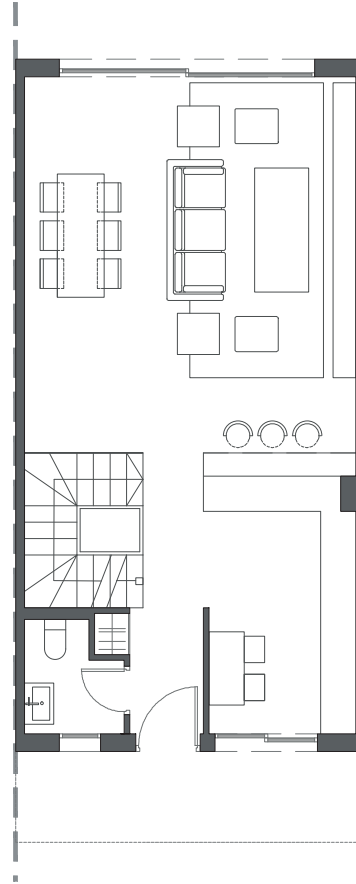


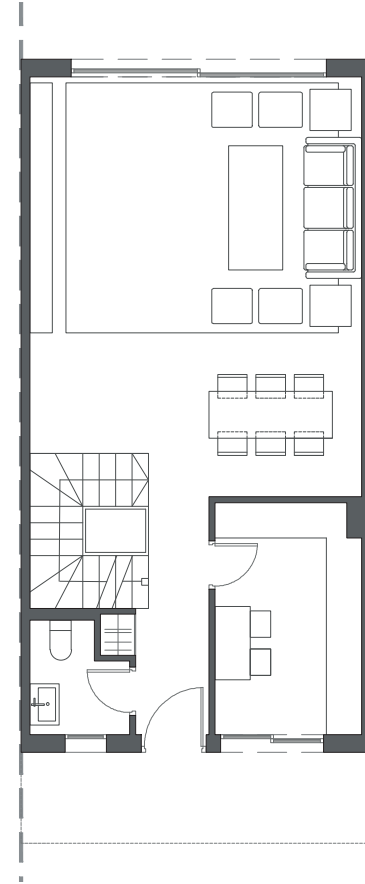
LA VALVEGA
de La Cala



GROUND FLOOR A



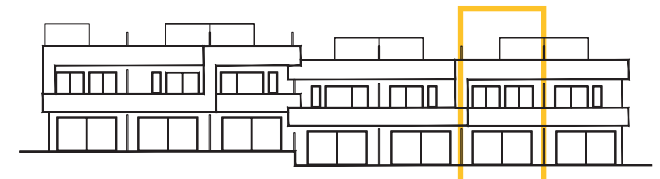
GROUND FLOOR B



GROUND FLOOR C

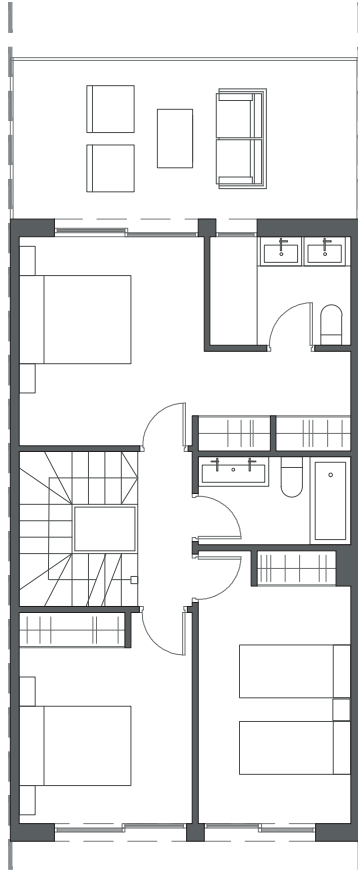
HOUSE 30 - BLOCK 4

TYPE 2 - RIGHT

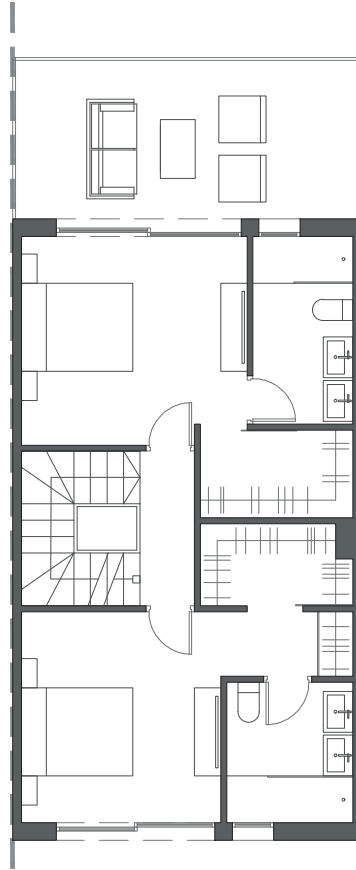


Interior view

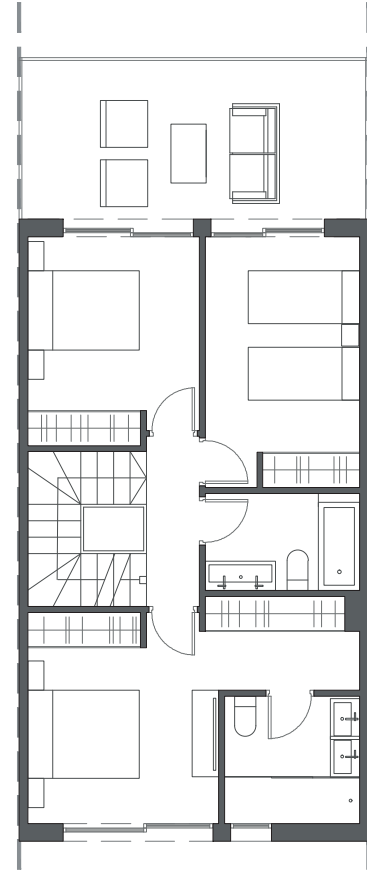

LA VALVEGA
de La Cala



FIRST FLOOR A



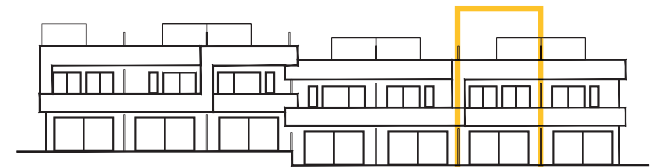
FIRST FLOOR B



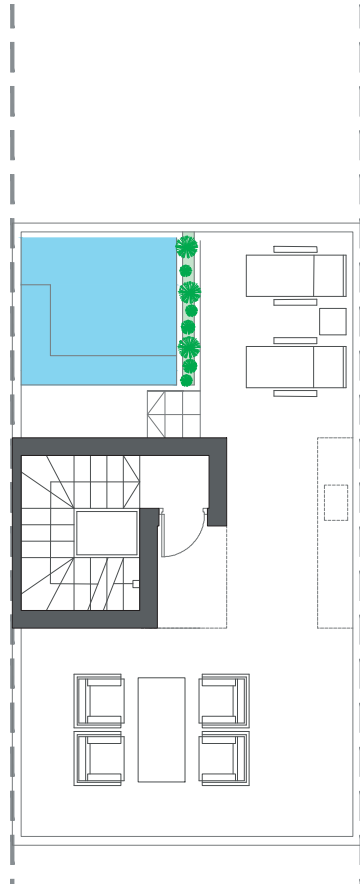
FIRST FLOOR C

HOUSE 30 - BLOCK 4

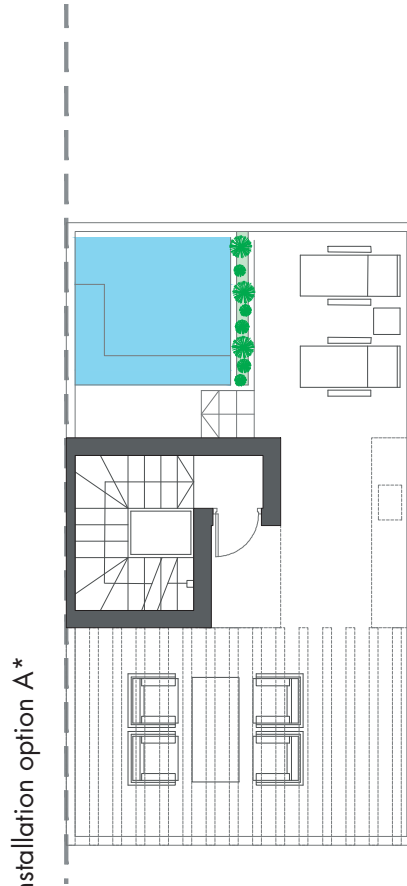
TYPE 2 - RIGHT



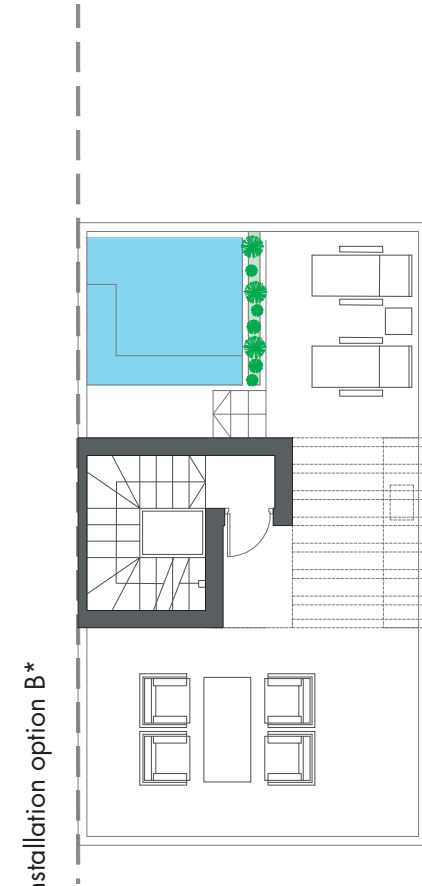
Interior view



ROOFTOP



ROOFTOP

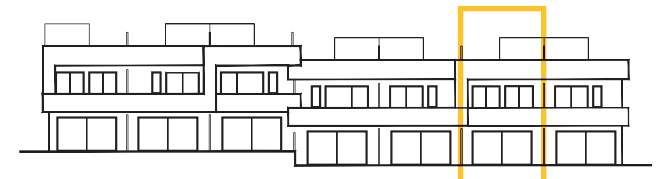


ROOFTOP

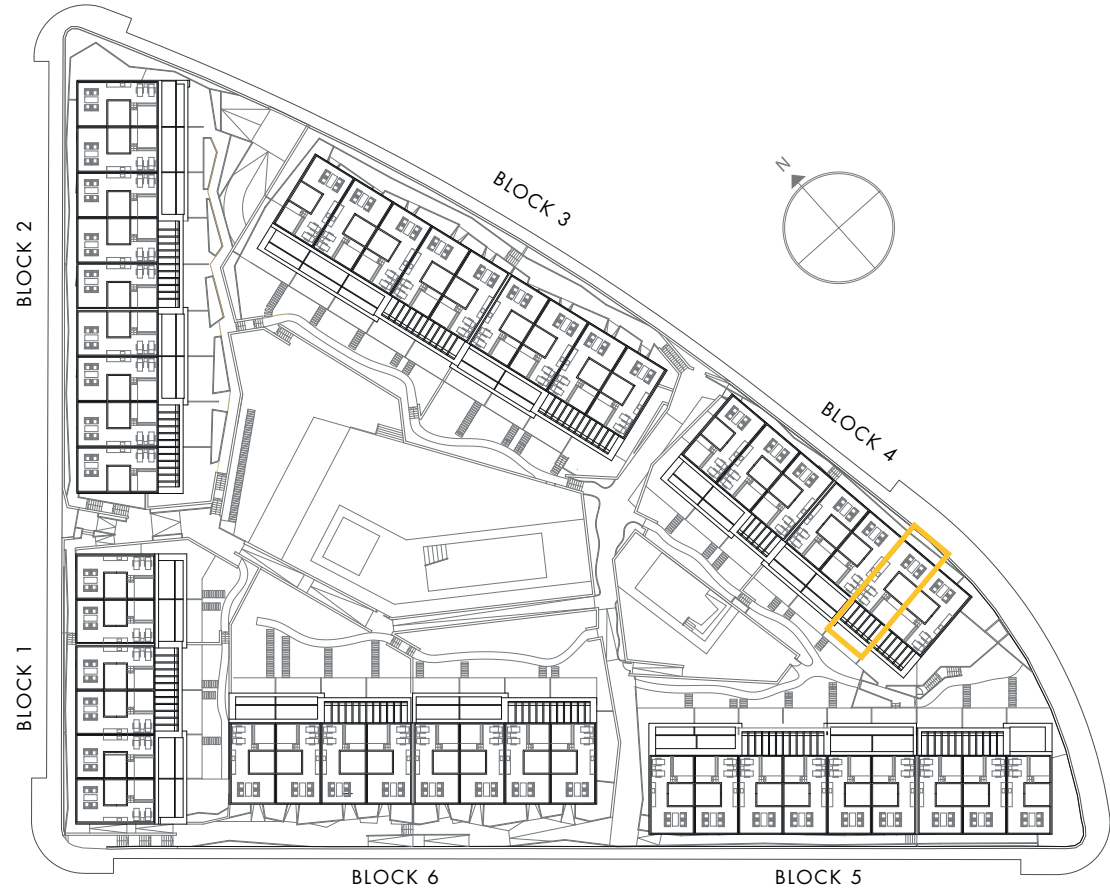
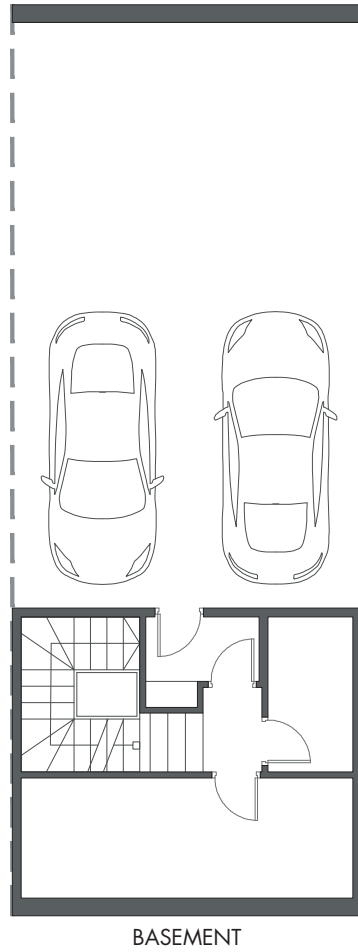
HOUSE 30 - BLOCK 4

TYPE 2 - RIGHT

*These options only include the pre-installation for a pergola, which the client can install in the desired configuration.



Interior view



HOUSE 30 - BLOCK 4

TYPE 2 - RIGHT

