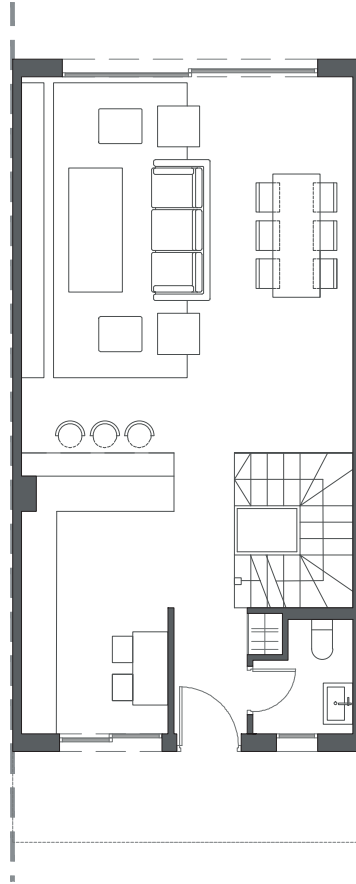
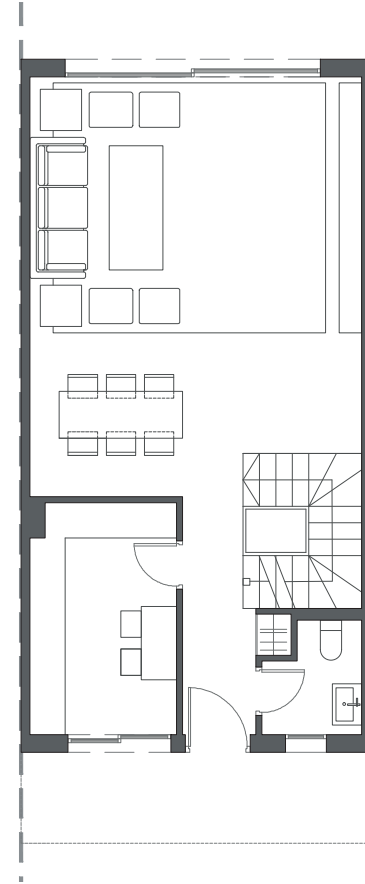


GROUND FLOOR A



GROUND FLOOR B



GROUND FLOOR C

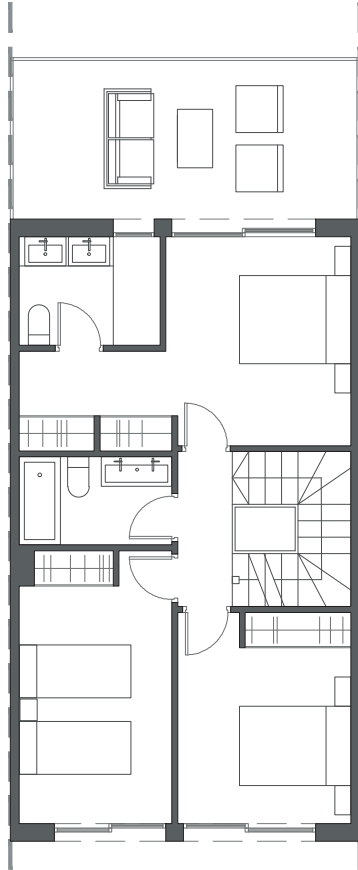
HOUSE 31 - BLOCK 4

TYPE 2 - LEFT

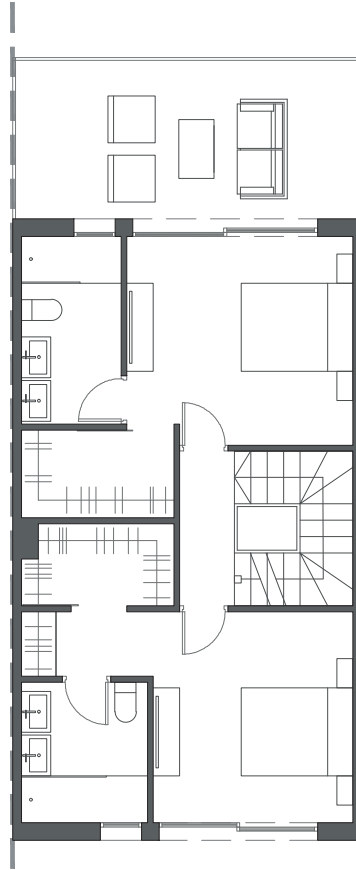


Interior view

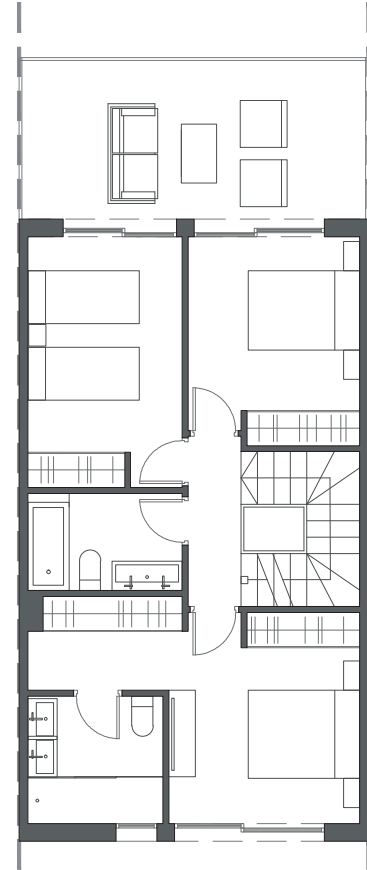
  
LA VALVEGA  
de La Cala



FIRST FLOOR A



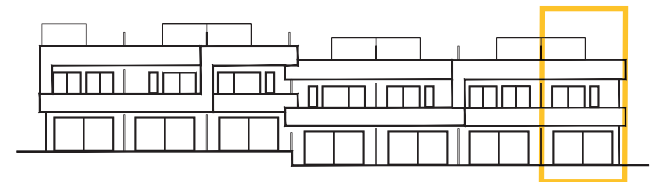
FIRST FLOOR B



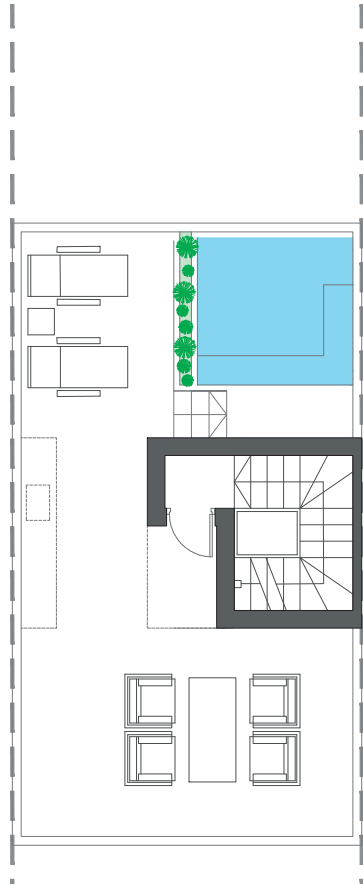
FIRST FLOOR C

HOUSE 31 - BLOCK 4

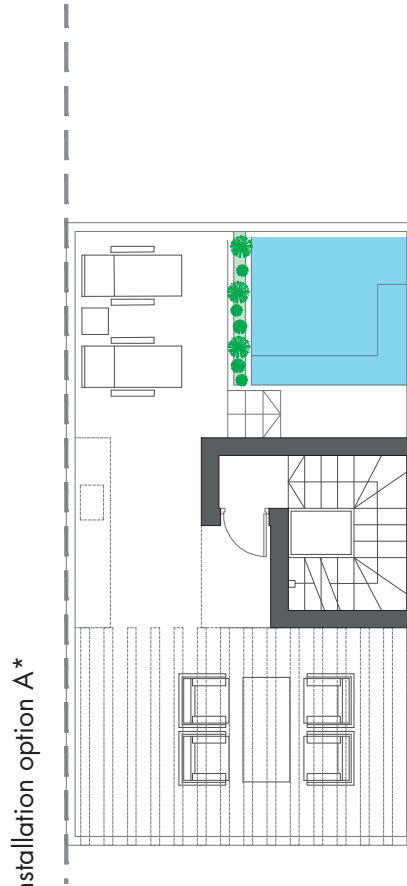
TYPE 2 - LEFT



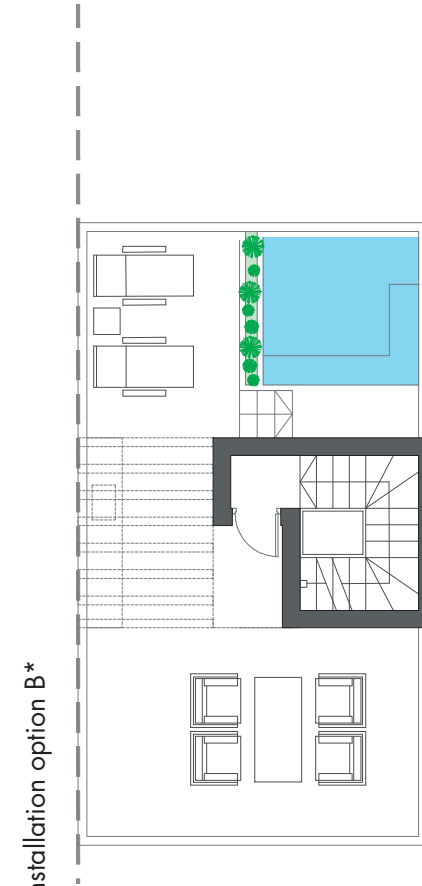
Interior view



ROOFTOP



ROOFTOP

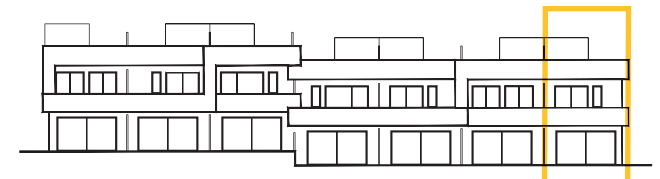


ROOFTOP

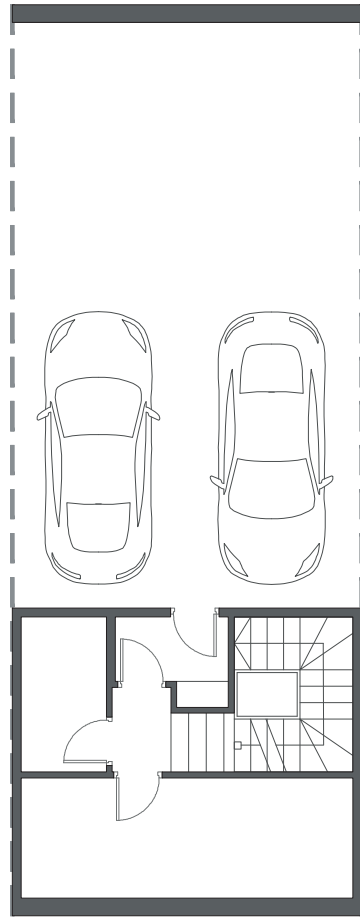
HOUSE 31 - BLOCK 4

TYPE 2 - LEFT

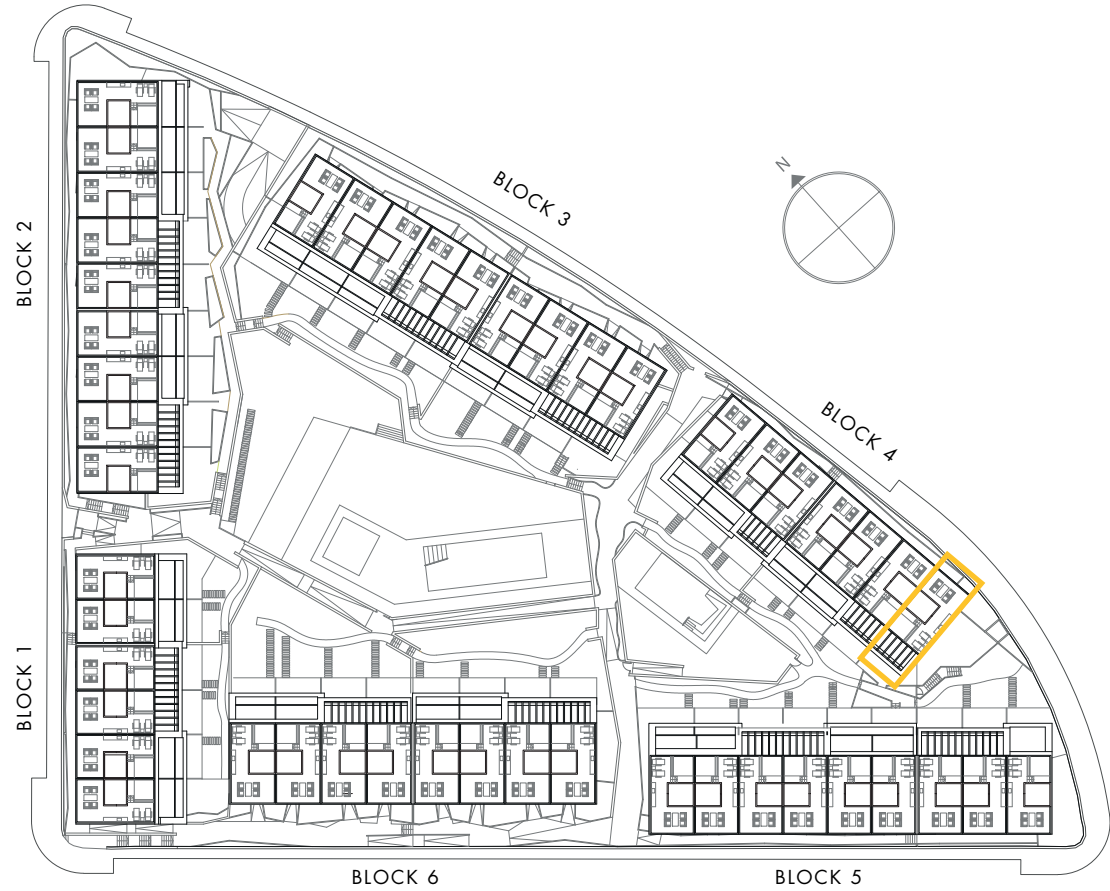
\*These options only include the pre-installation for a pergola, which the client can install in the desired configuration.



Interior view



BASEMENT

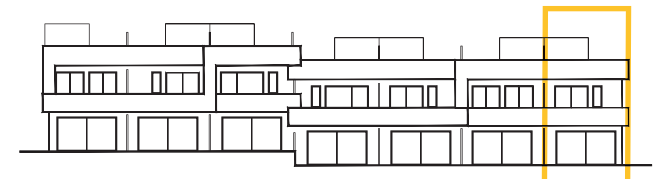


BLOCK 6

BLOCK 5

HOUSE 31 - BLOCK 4

TYPE 2 - LEFT



Interior view