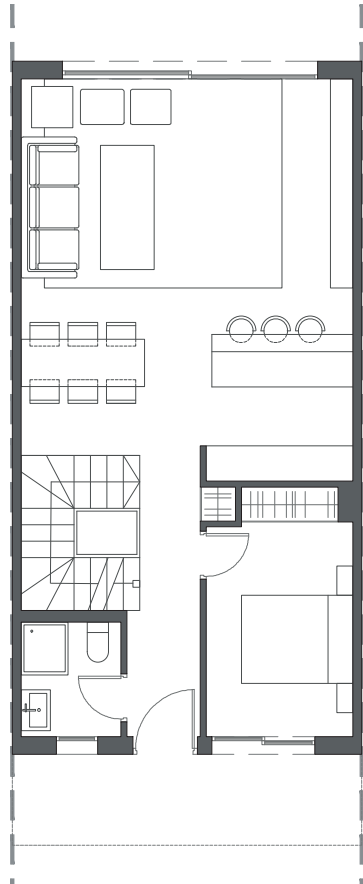
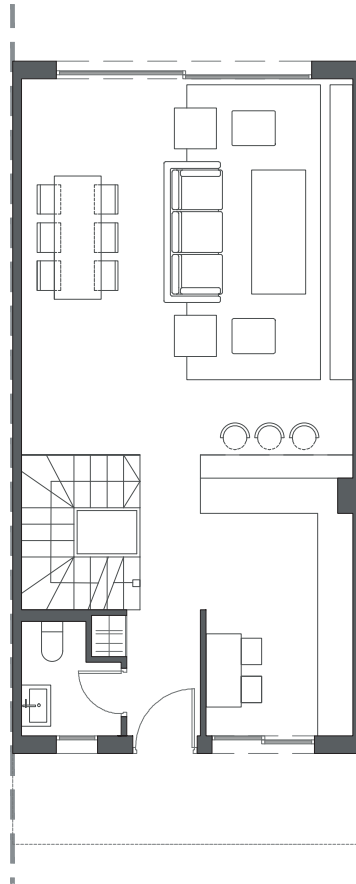




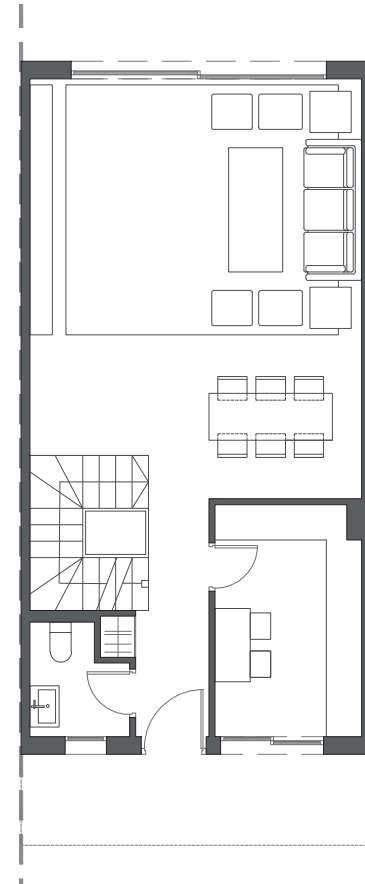
LA VALVEGA
de La Cala



GROUND FLOOR A



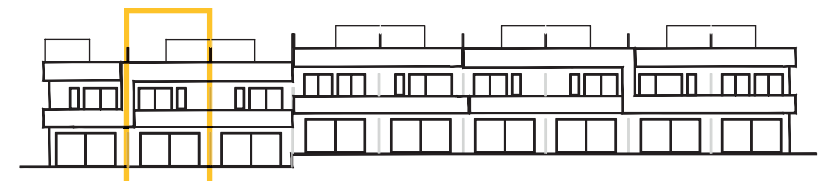
GROUND FLOOR B



GROUND FLOOR C

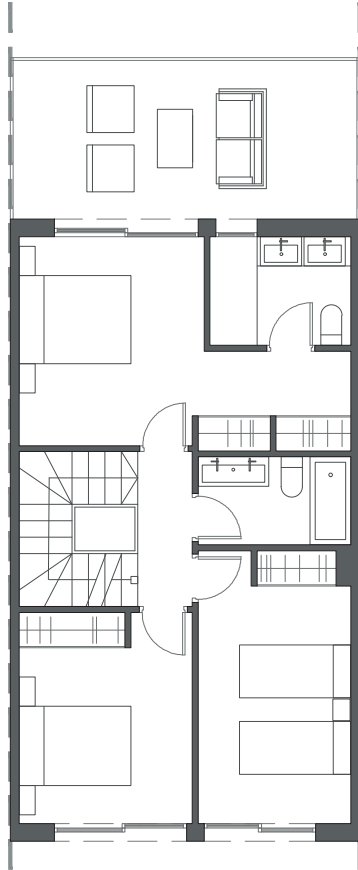
HOUSE 33 - BLOCK 5

TYPE 2 - RIGHT

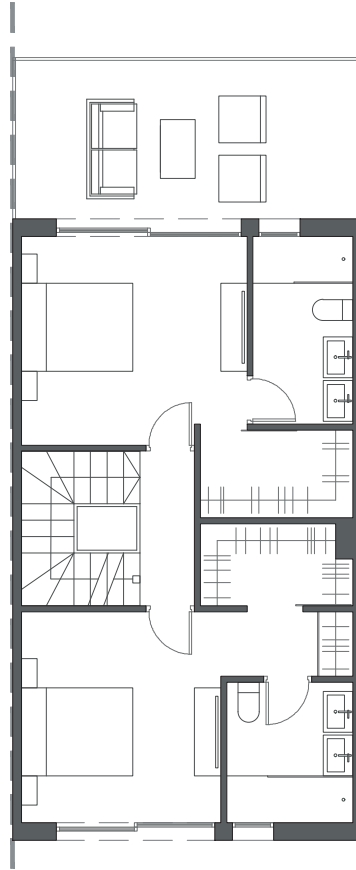


Interior view

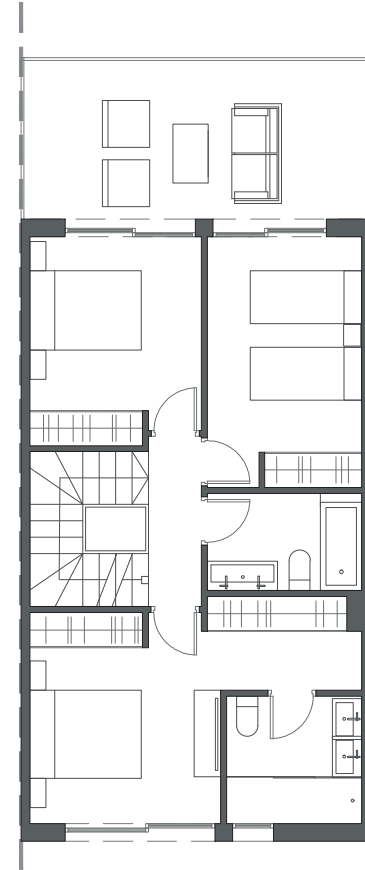
LA VALVEGA
de La Cala



FIRST FLOOR A



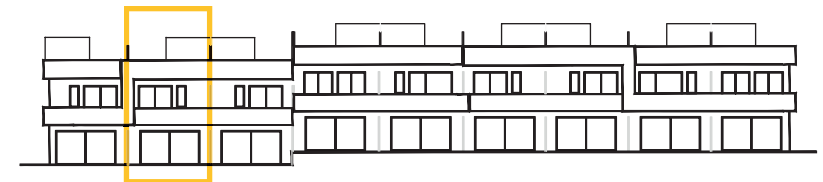
FIRST FLOOR B



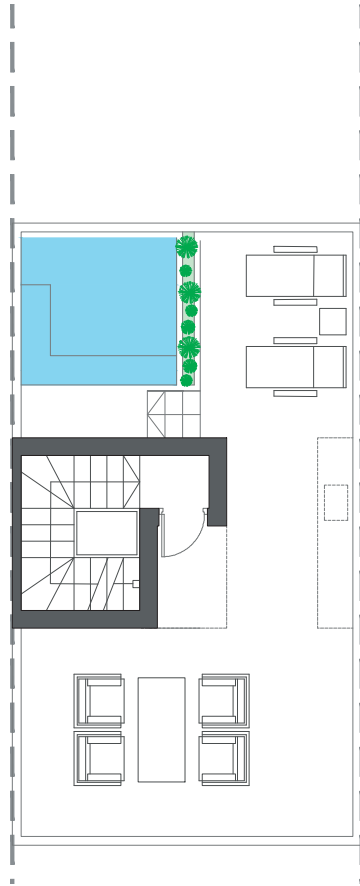
FIRST FLOOR C

HOUSE 33 - BLOCK 5

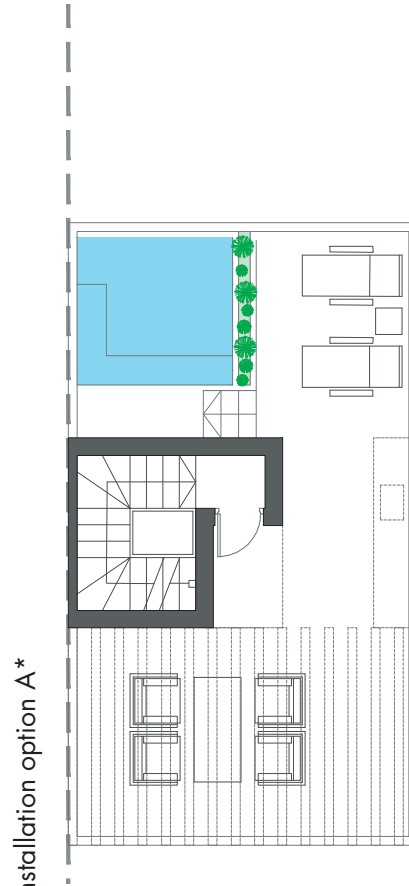
TYPE 2 - RIGHT



Interior view

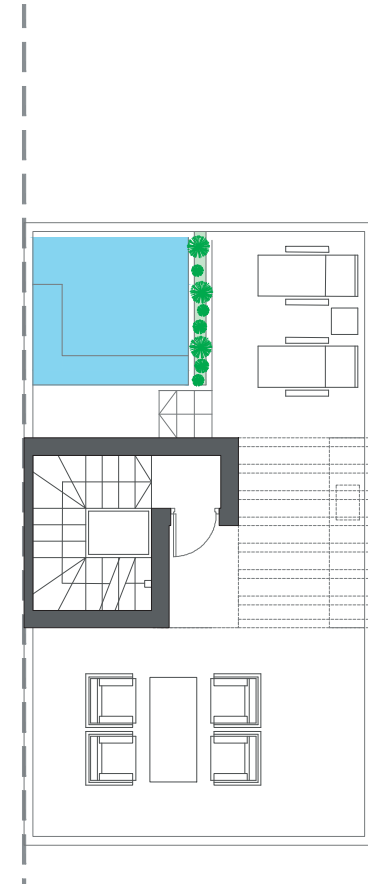


ROOFTOP



Pre-installation option A*

ROOFTOP

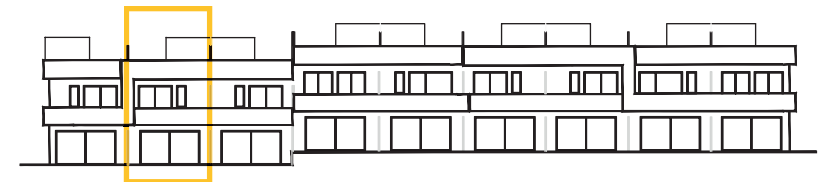


Pre-installation option B*

ROOFTOP

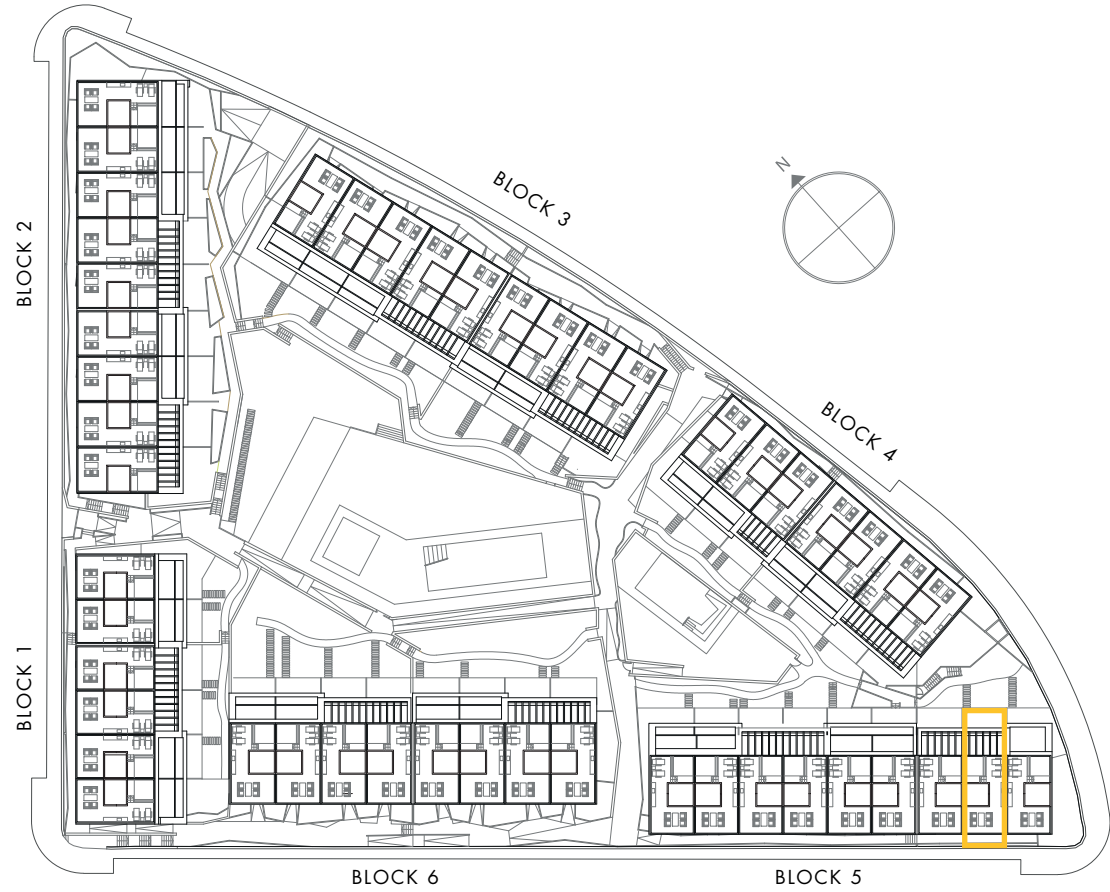
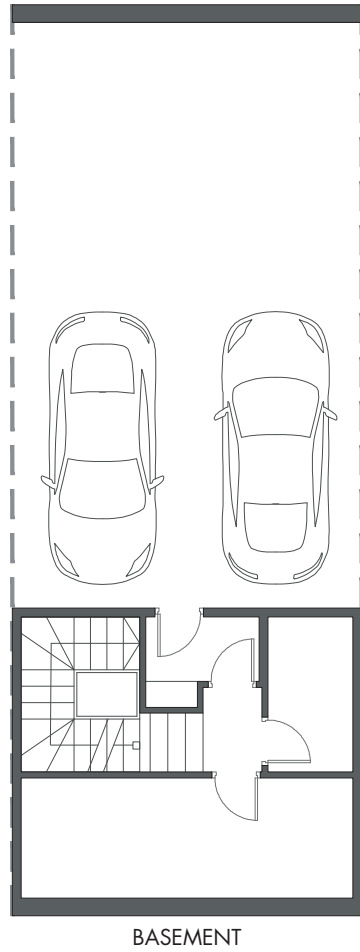
HOUSE 33 - BLOCK 5

TYPE 2 - RIGHT



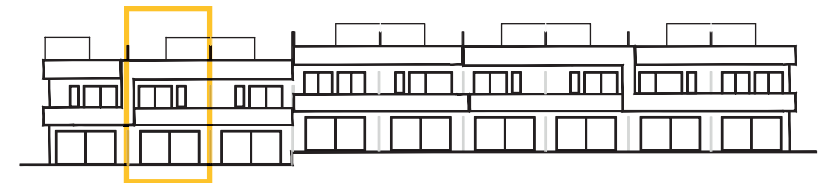
Interior view

*These options only include the pre-installation for a pergola, which the client can install in the desired configuration.



HOUSE 33 - BLOCK 5

TYPE 2 - RIGHT



Interior view