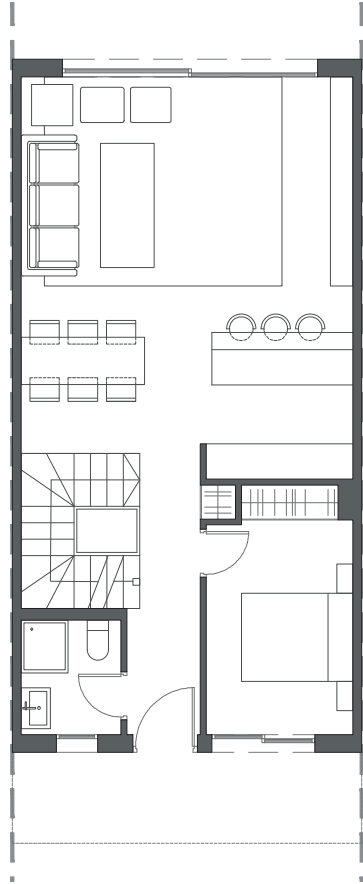
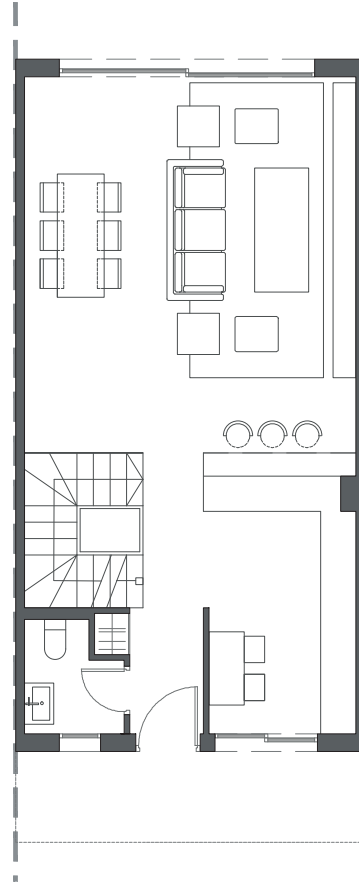


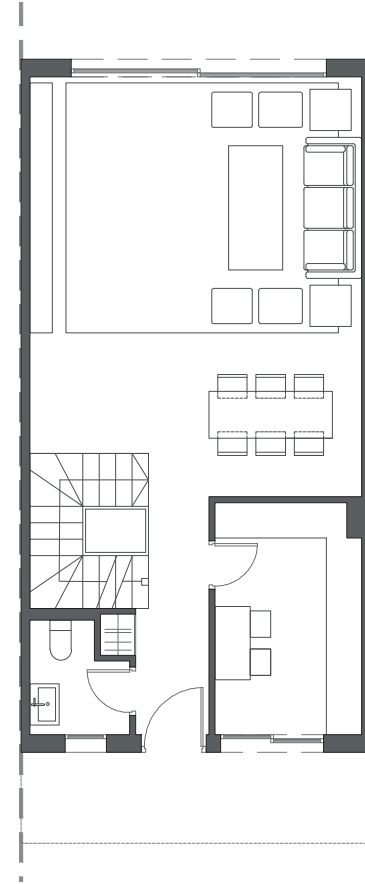
  
LA VALVEGA  
de La Cala



GROUND FLOOR A



GROUND FLOOR B



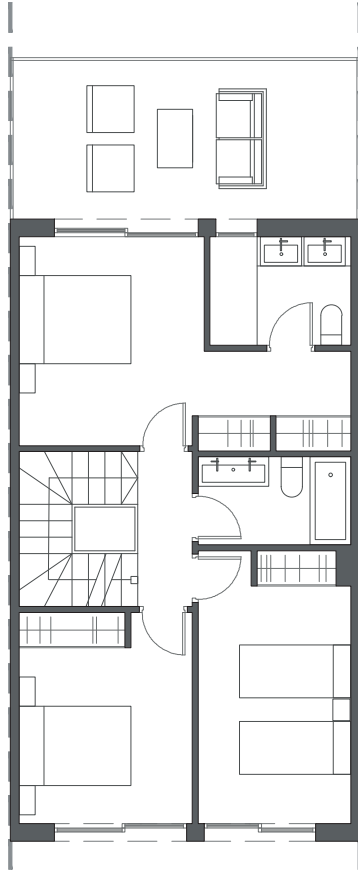
GROUND FLOOR C

HOUSE 35 - BLOCK 5

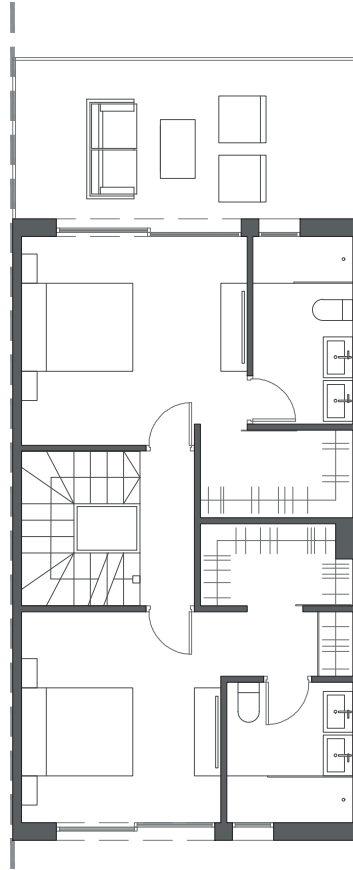
TYPE 2 - RIGHT



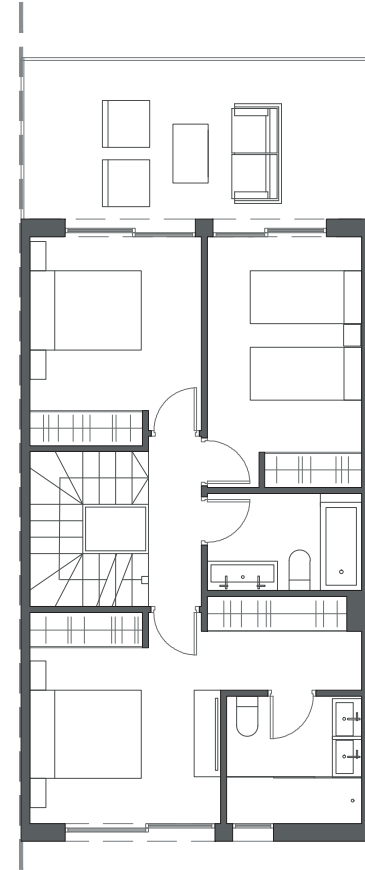
Interior view



FIRST FLOOR A



FIRST FLOOR B



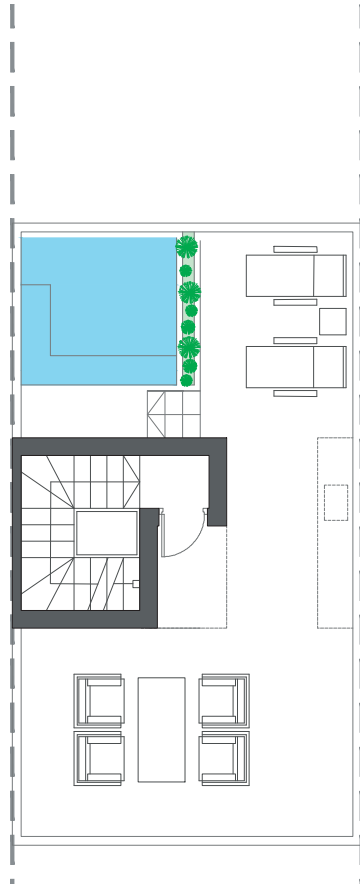
FIRST FLOOR C

HOUSE 35 - BLOCK 5

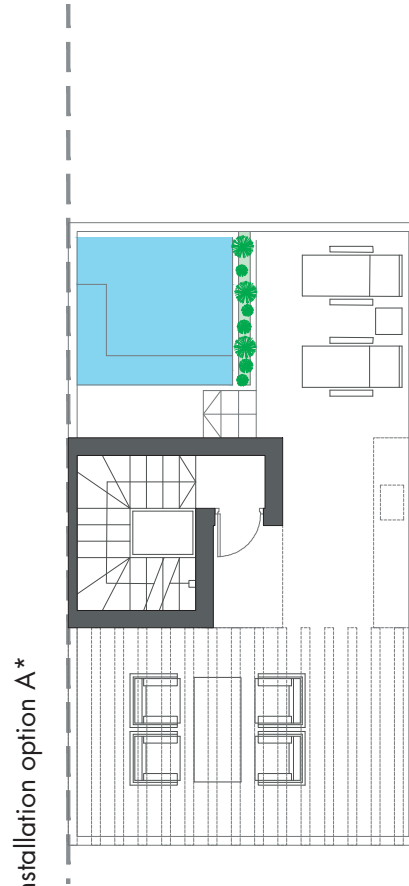
TYPE 2 - RIGHT



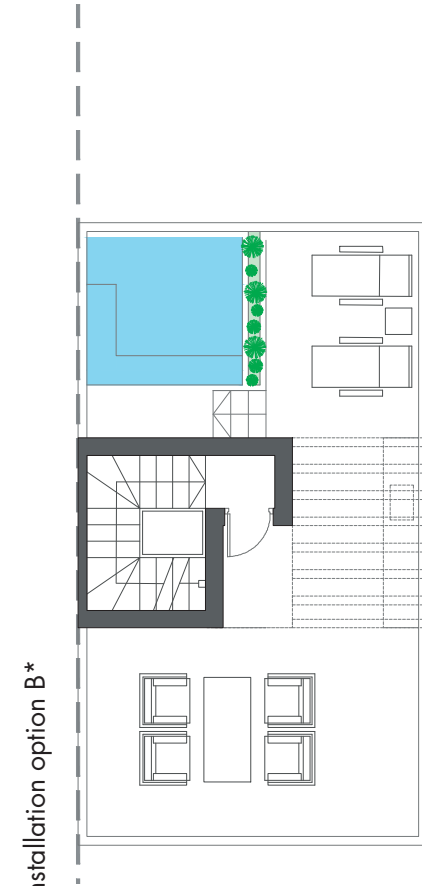
Interior view



ROOFTOP



ROOFTOP



ROOFTOP

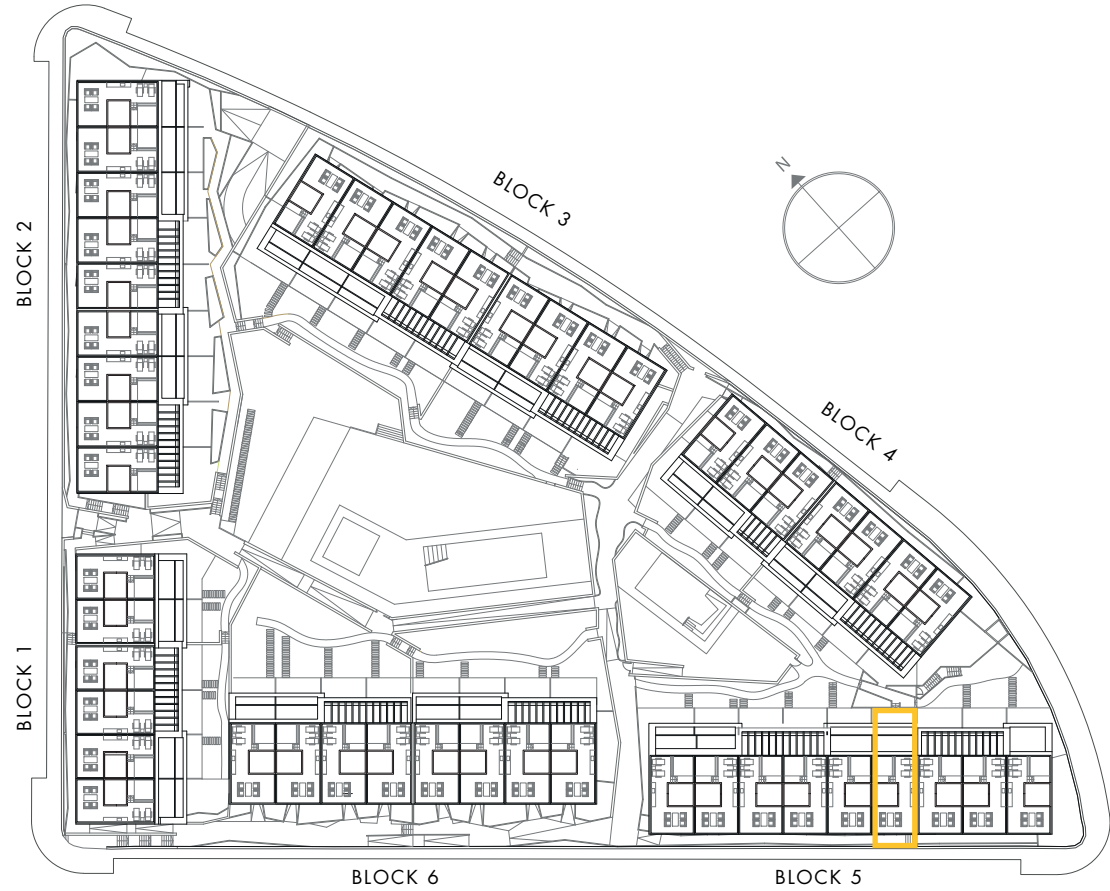
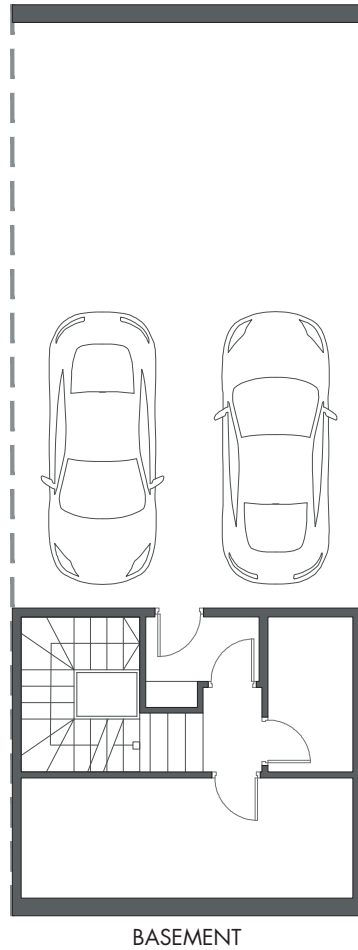
HOUSE 35 - BLOCK 5

TYPE 2 - RIGHT

\*These options only include the pre-installation for a pergola, which the client can install in the desired configuration.



Interior view



HOUSE 35 - BLOCK 5

TYPE 2 - RIGHT

