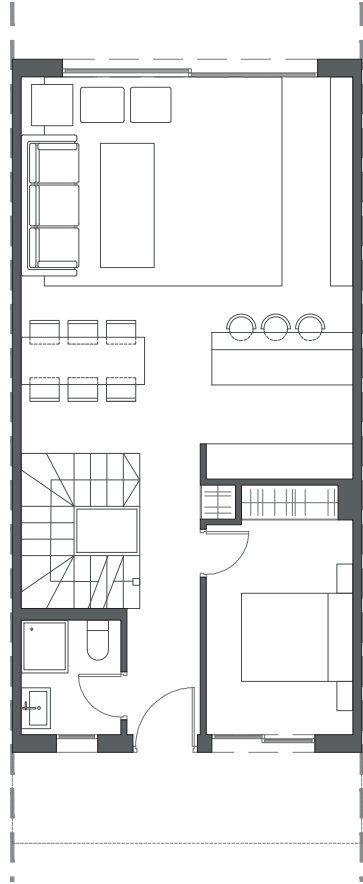
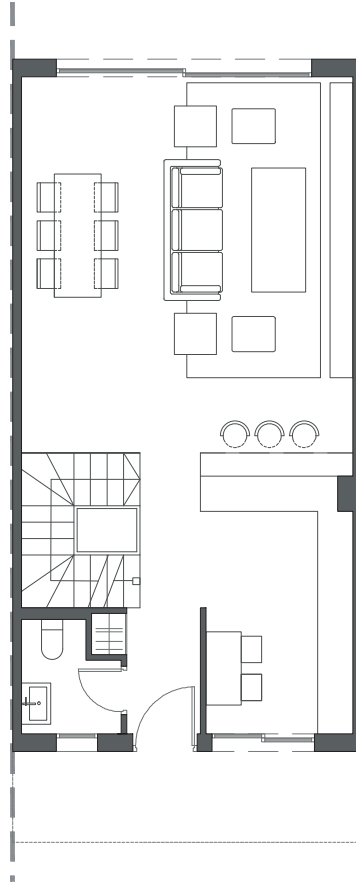




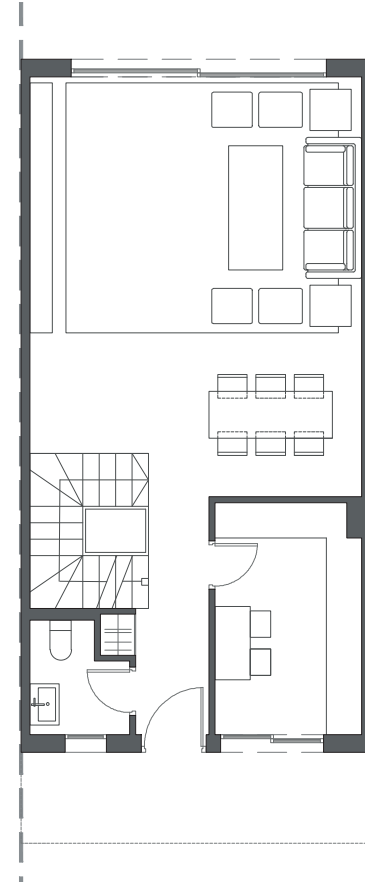
LA VALVEGA
de La Cala



GROUND FLOOR A



GROUND FLOOR B



GROUND FLOOR C

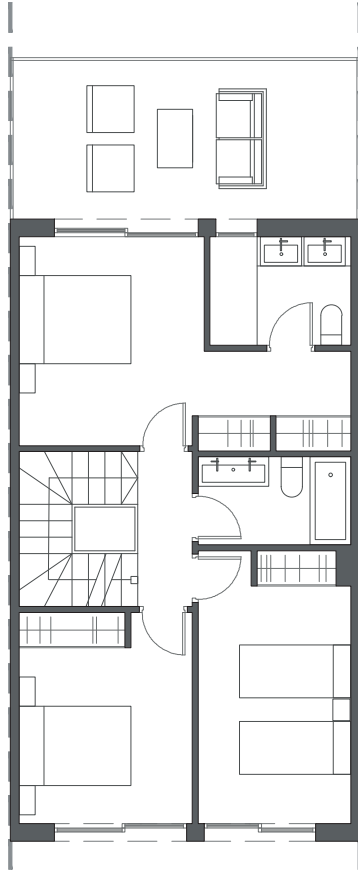
HOUSE 37 - BLOCK 5

TYPE 2 - RIGHT

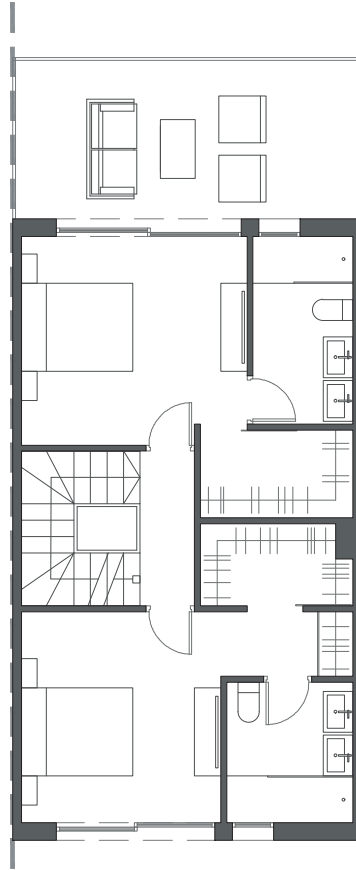


Interior view

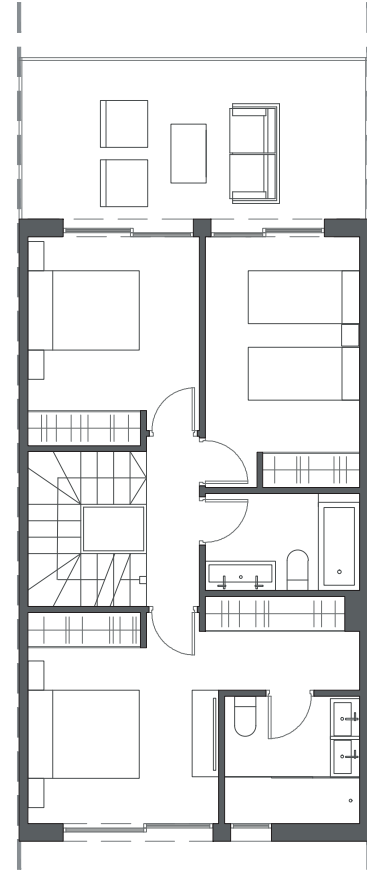

LA VALVEGA
de La Cala



FIRST FLOOR A



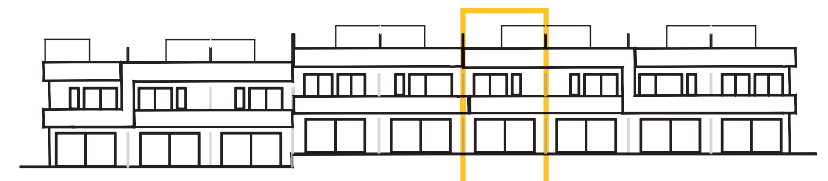
FIRST FLOOR B



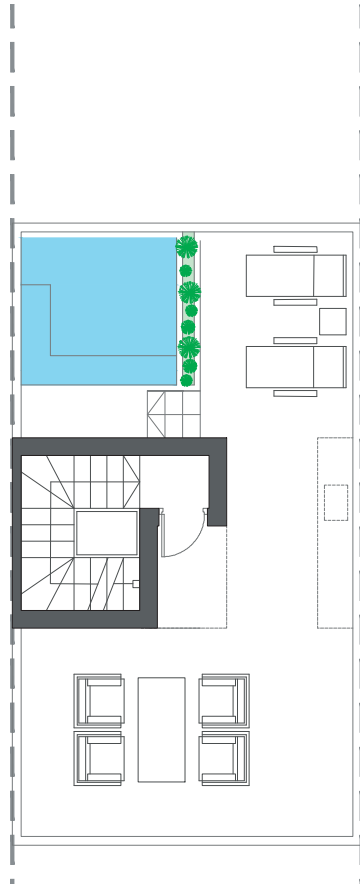
FIRST FLOOR C

HOUSE 37 - BLOCK 5

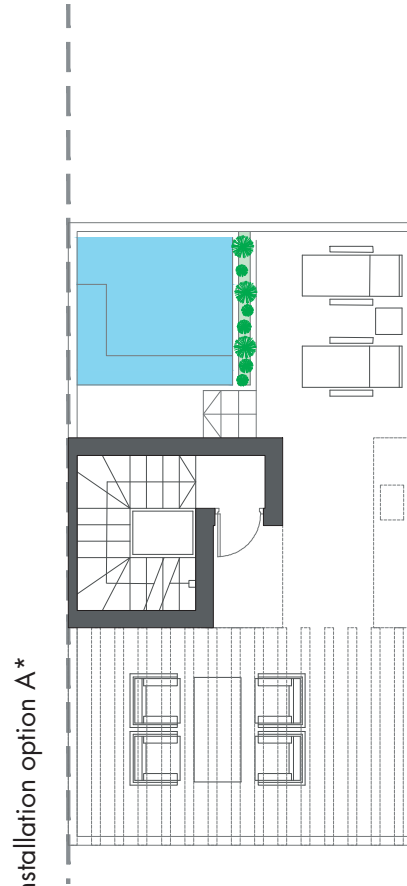
TYPE 2 - RIGHT



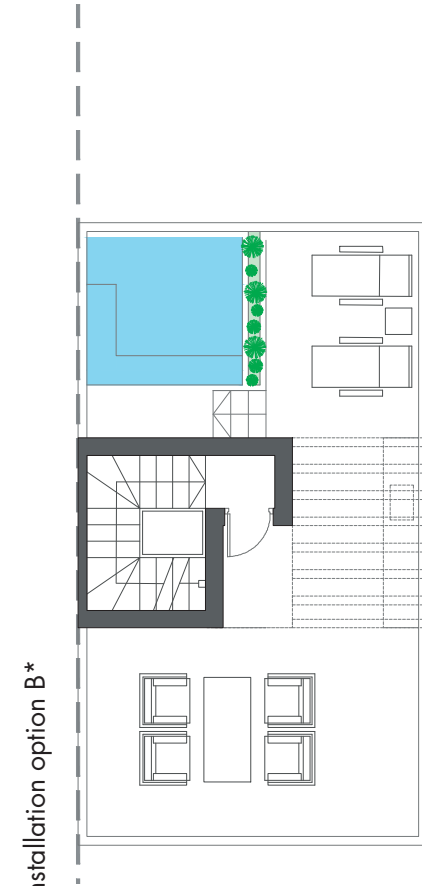
Interior view



ROOFTOP



ROOFTOP

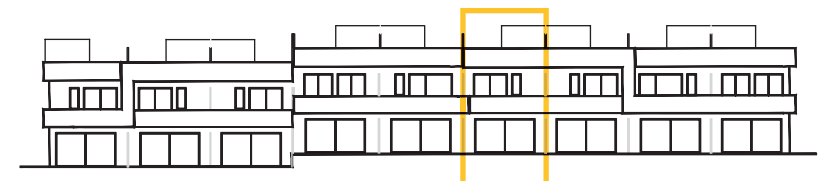


ROOFTOP

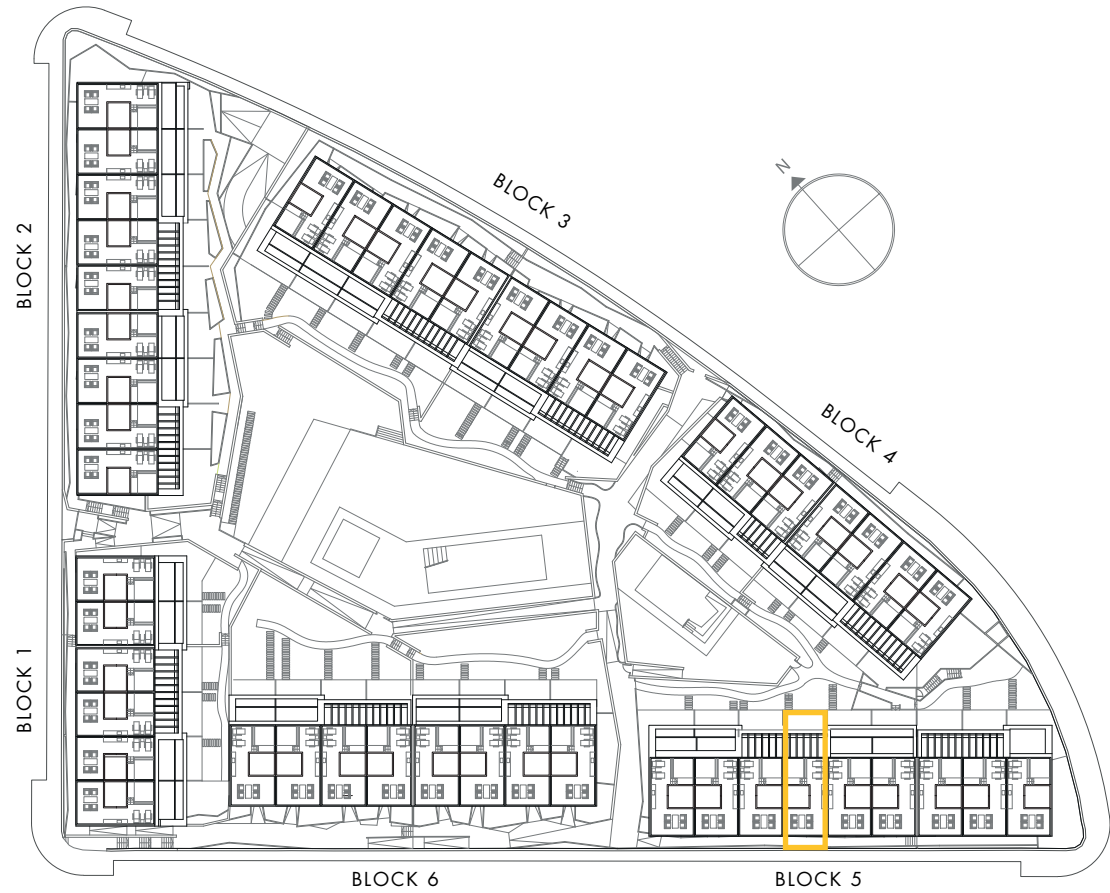
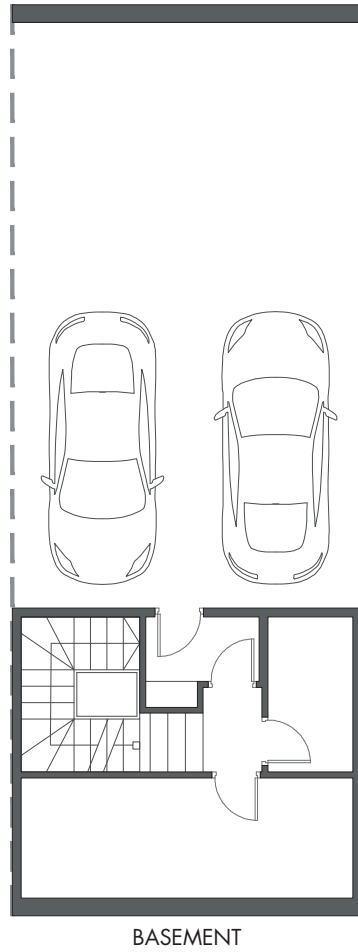
HOUSE 37 - BLOCK 5

TYPE 2 - RIGHT

*These options only include the pre-installation for a pergola, which the client can install in the desired configuration.



Interior view



HOUSE 37 - BLOCK 5

TYPE 2 - RIGHT

