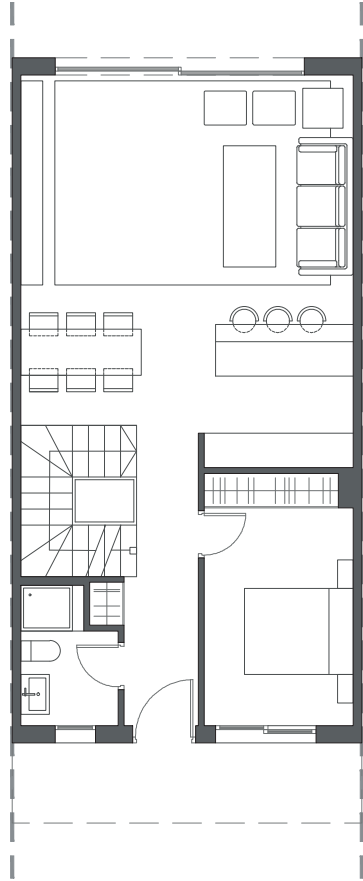
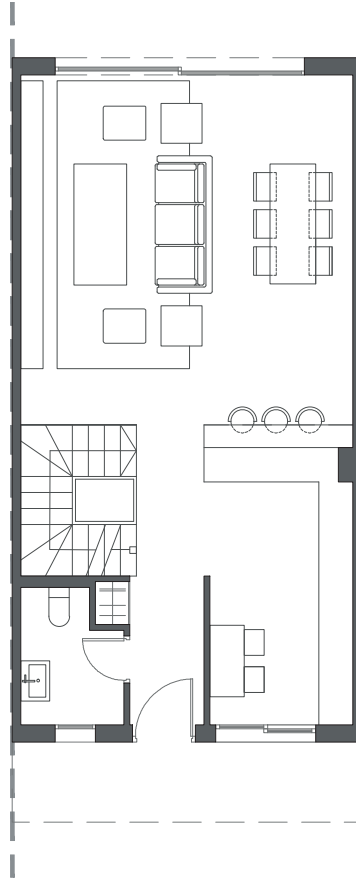


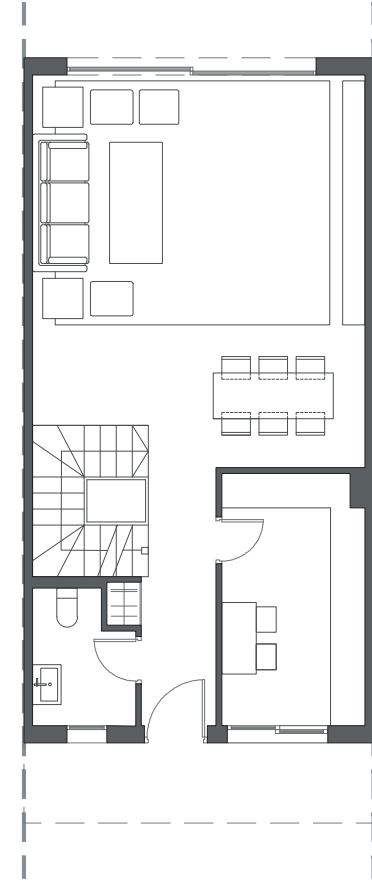

LA VALVEGA
de La Cala



GROUND FLOOR A



GROUND FLOOR B



GROUND FLOOR C

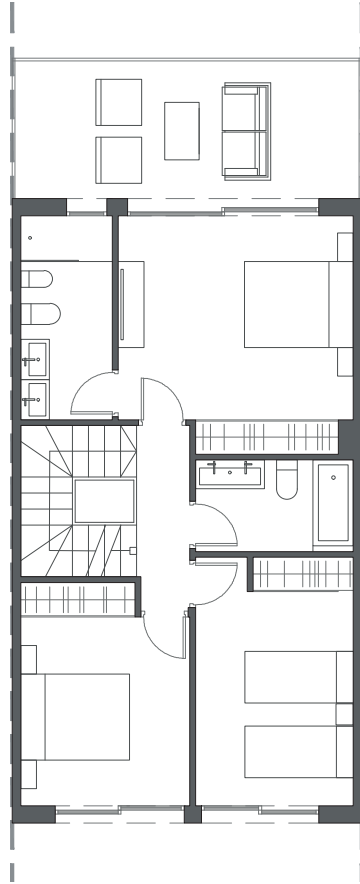
HOUSE 41 - BLOCK 6

TYPE 1-B - RIGHT

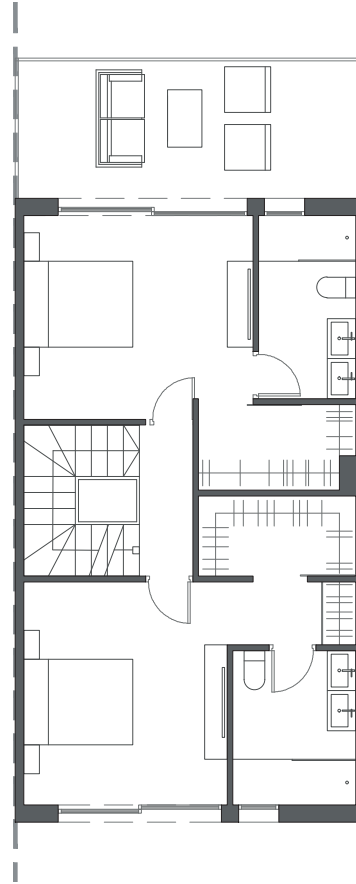


Interior view


LA VALVEGA
de La Cala



FIRST FLOOR A



FIRST FLOOR B



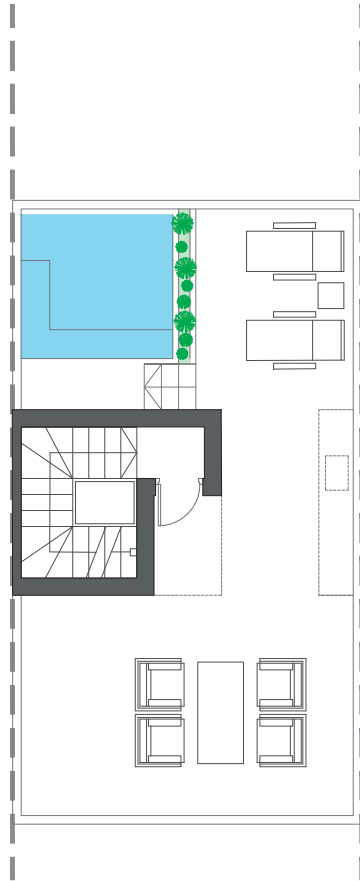
FIRST FLOOR C

HOUSE 41 - BLOCK 6

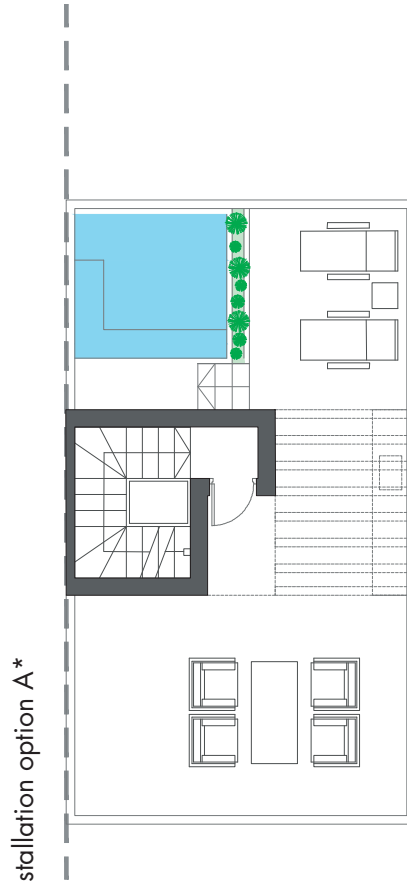
TYPE 1-B - RIGHT



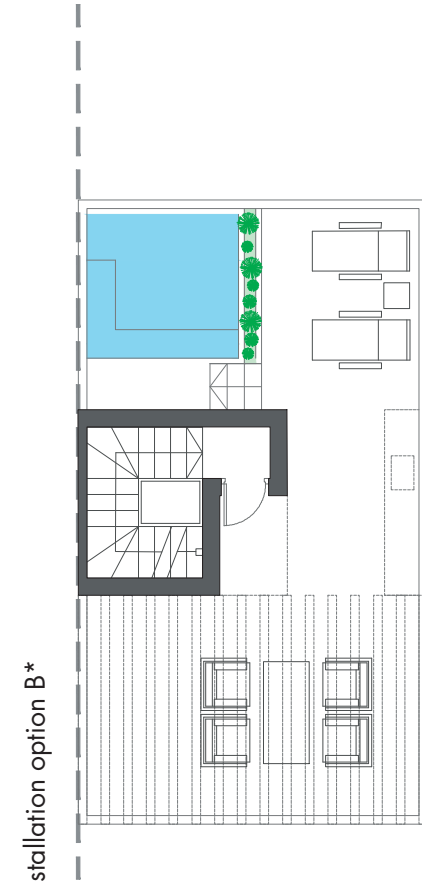
Interior view



ROOFTOP



ROOFTOP



ROOFTOP

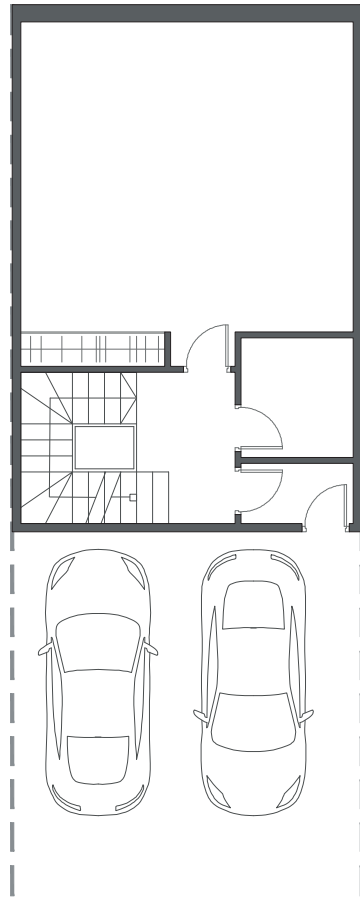
HOUSE 41 - BLOCK 6

TYPE 1-B - RIGHT

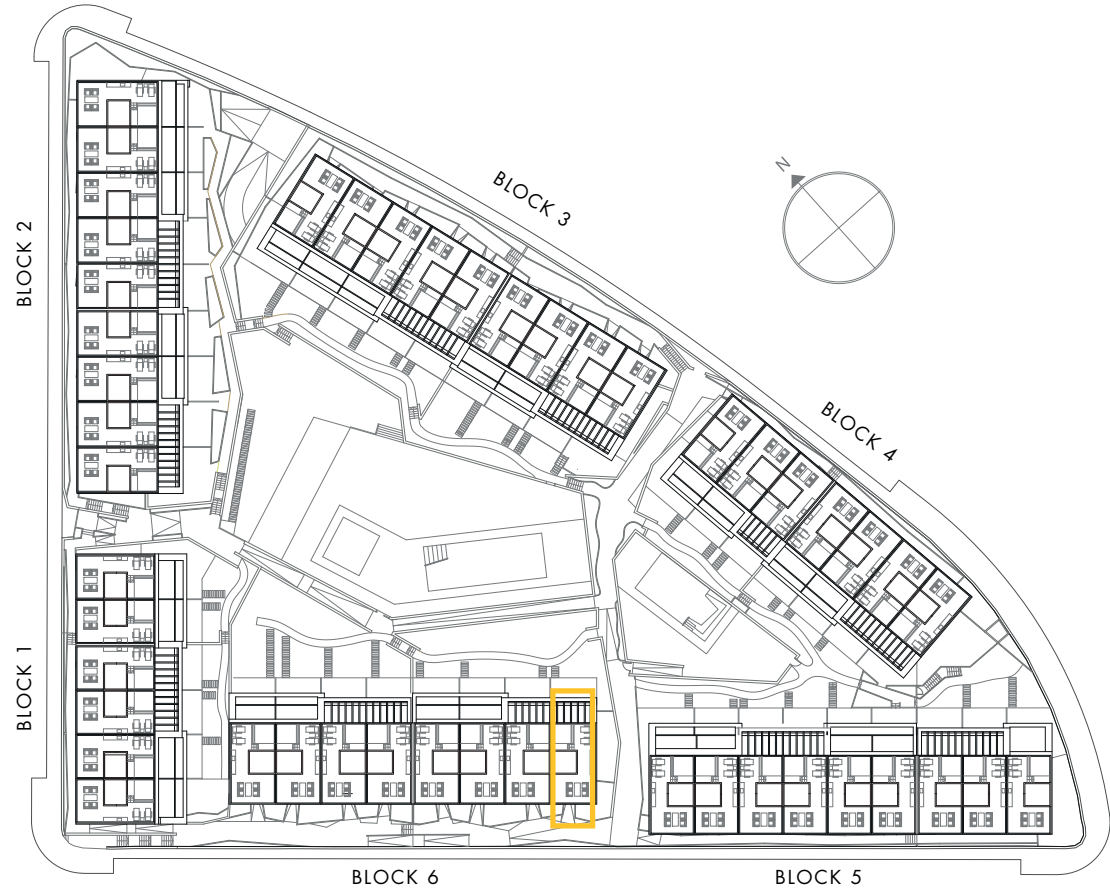
*These options only include the pre-installation for a pergola, which the client can install in the desired configuration.



Interior view



BASEMENT



BLOCK 6

BLOCK 5

HOUSE 41 - BLOCK 6

TYPE 1-B - RIGHT



Interior view