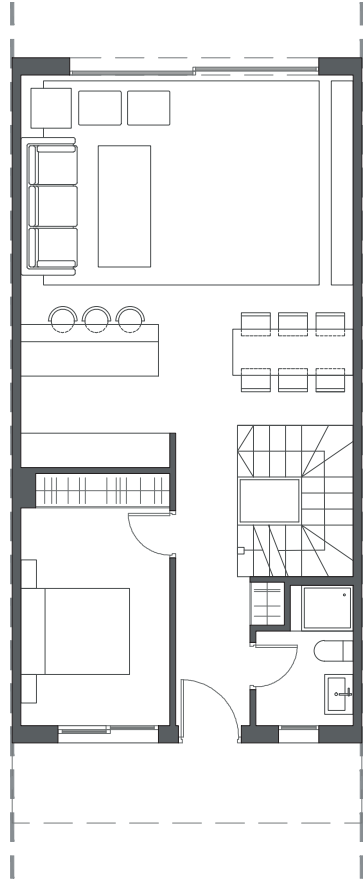
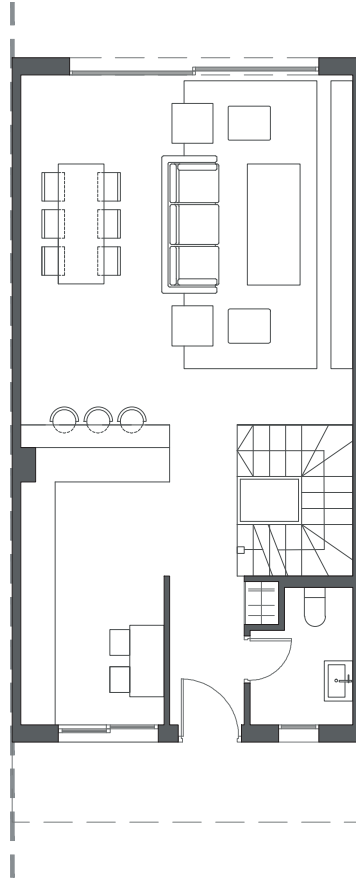


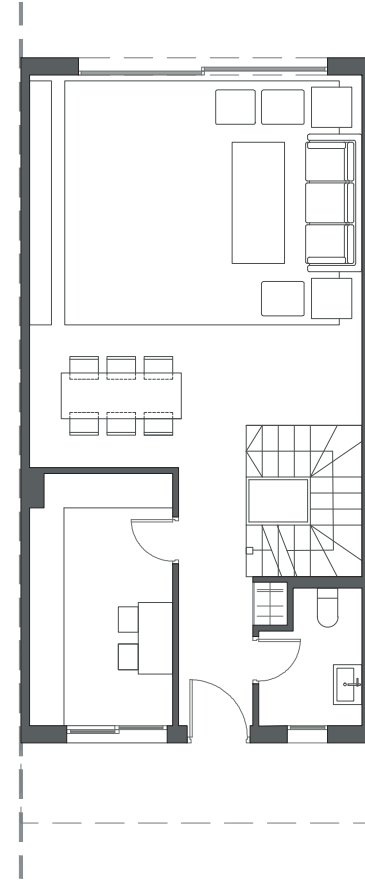
LA VALVEGA
de La Cala



GROUND FLOOR A



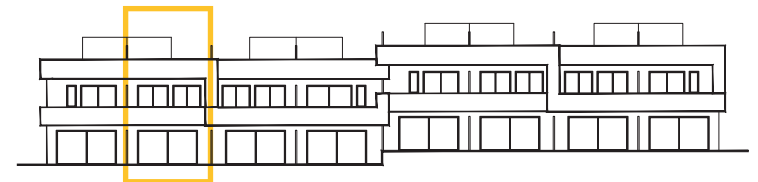
GROUND FLOOR B



GROUND FLOOR C

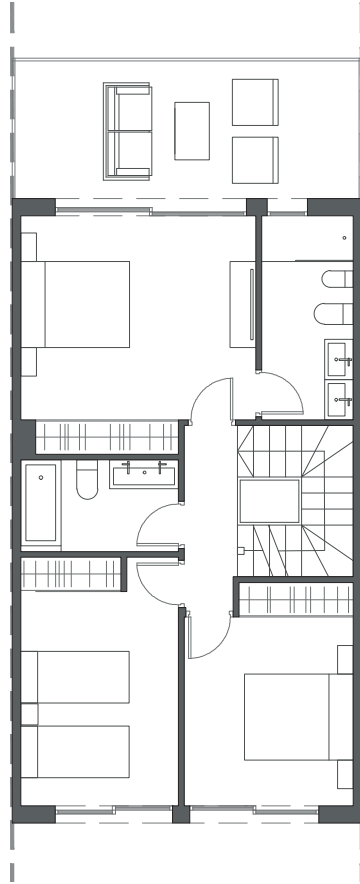
HOUSE 42 - BLOCK 6

TYPE 1-B - LEFT

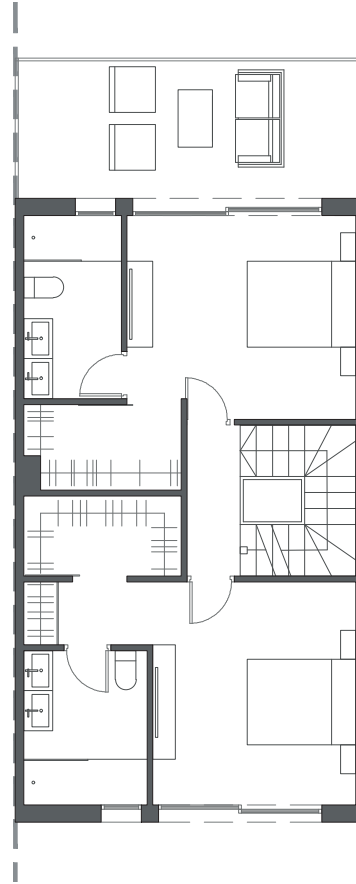


Interior view

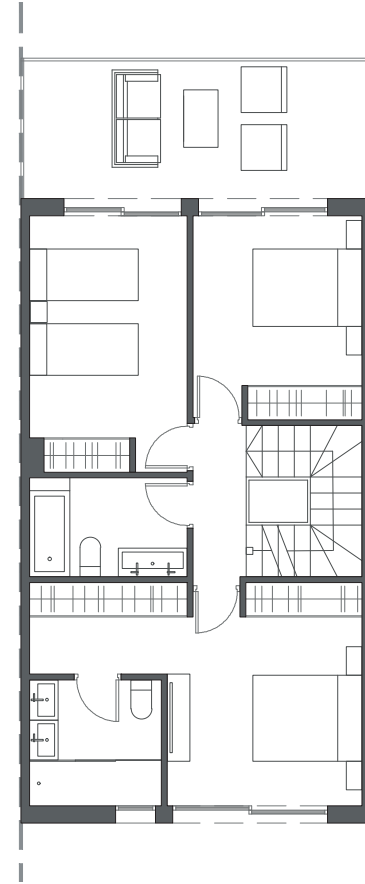

LA VALVEGA
de La Cala



FIRST FLOOR A



FIRST FLOOR B



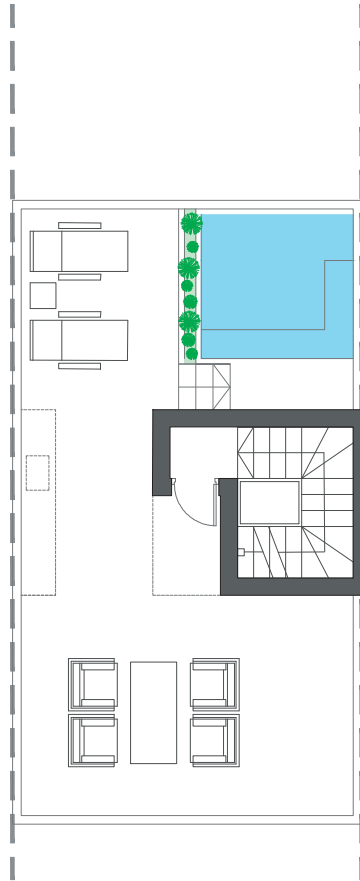
FIRST FLOOR C

HOUSE 42 - BLOCK 6

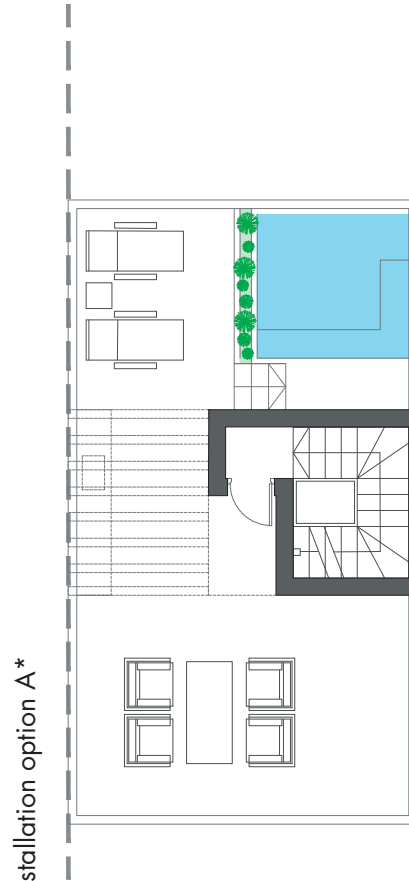
TYPE 1-B - LEFT



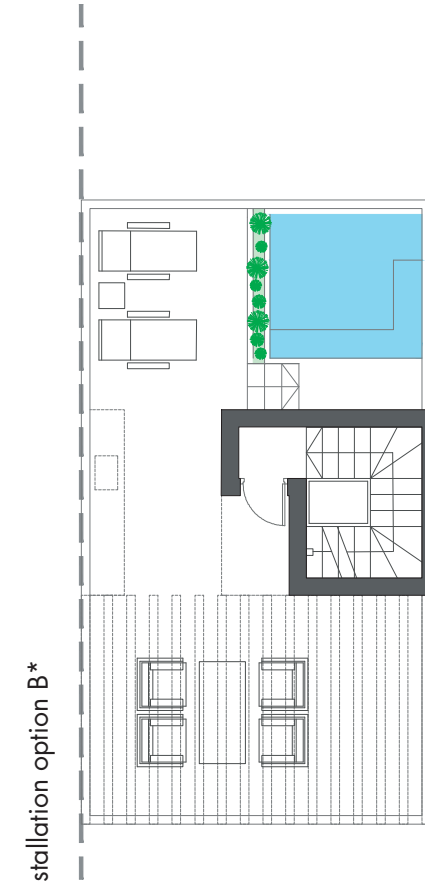
Interior view



ROOFTOP



ROOFTOP



ROOFTOP

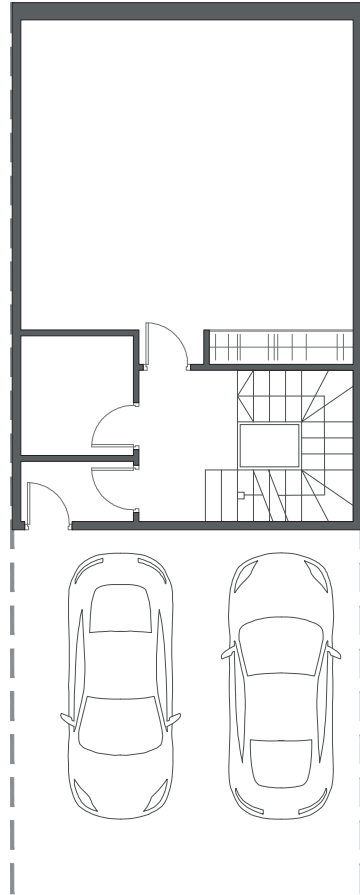
HOUSE 42 - BLOCK 6

TYPE 1-B - LEFT

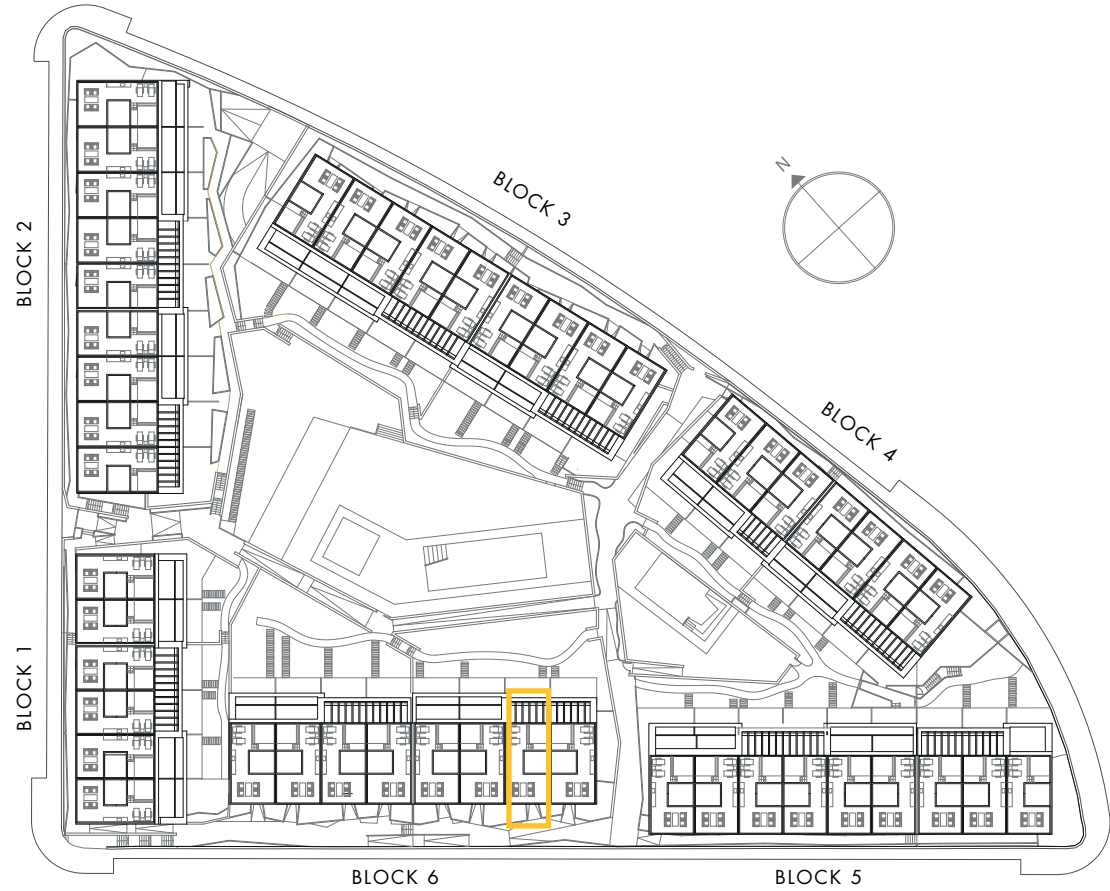
*These options only include the pre-installation for a pergola, which the client can install in the desired configuration.



Interior view

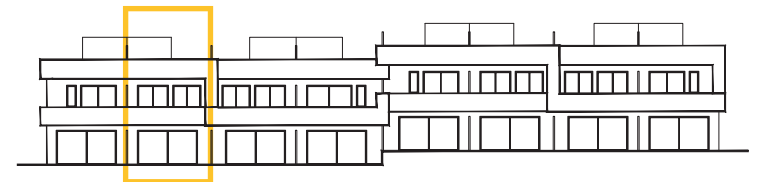


BASEMENT



HOUSE 42 - BLOCK 6

TYPE 1-B - LEFT



Interior view