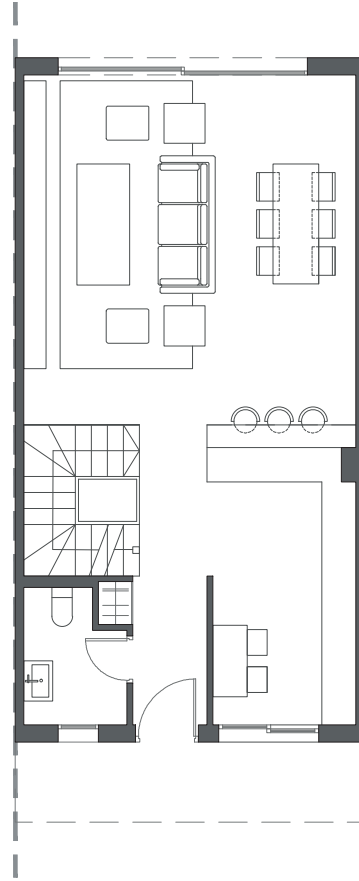
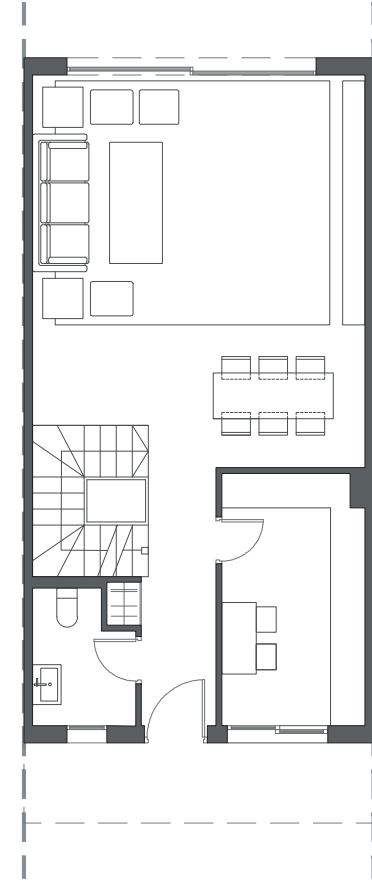


GROUND FLOOR A



GROUND FLOOR B



GROUND FLOOR C

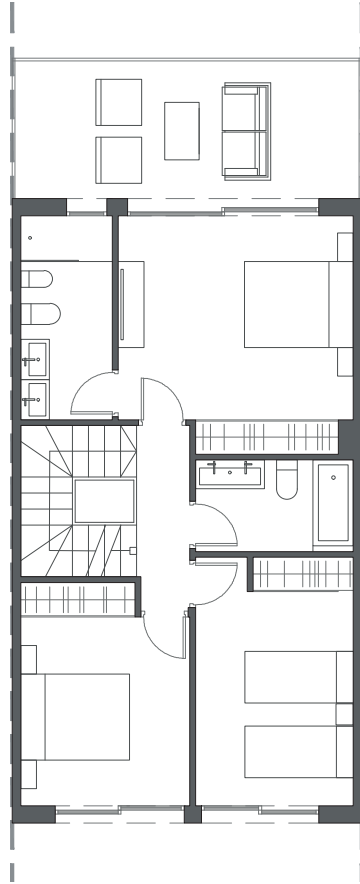
HOUSE 45 - BLOCK 6

TYPE 1-B - RIGHT

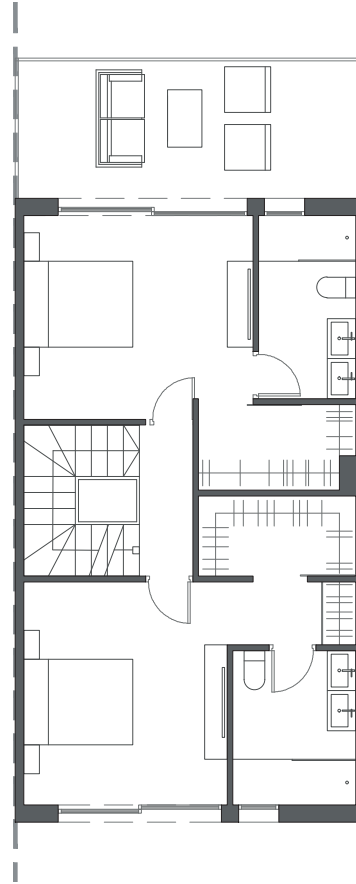


Interior view

**LA VALVEGA**  
de La Cala



FIRST FLOOR A



FIRST FLOOR B



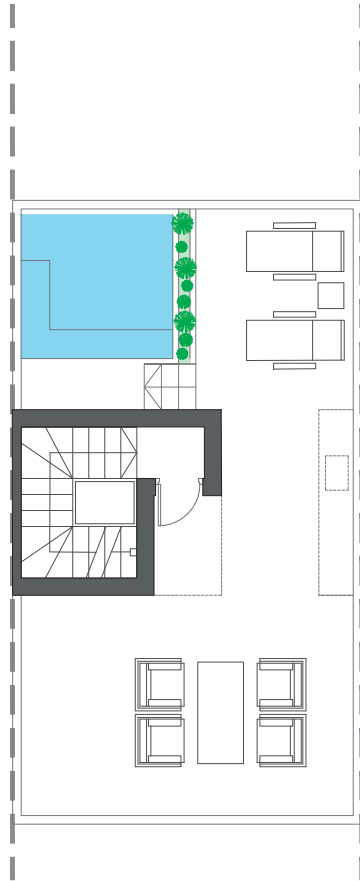
FIRST FLOOR C

HOUSE 45 - BLOCK 6

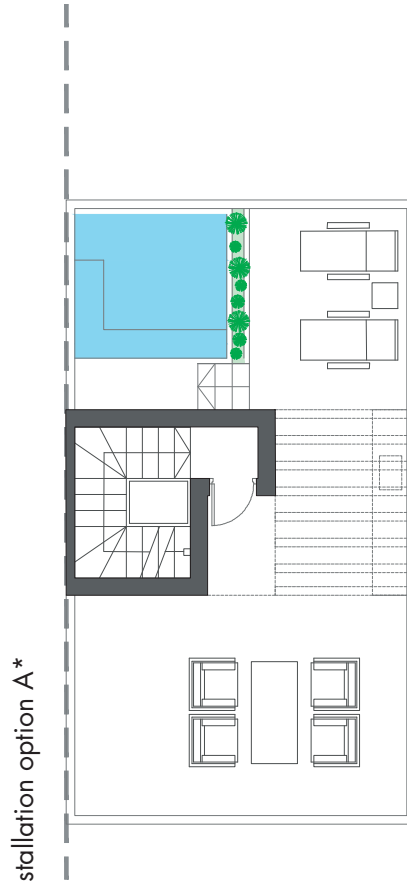
TYPE 1-B - RIGHT



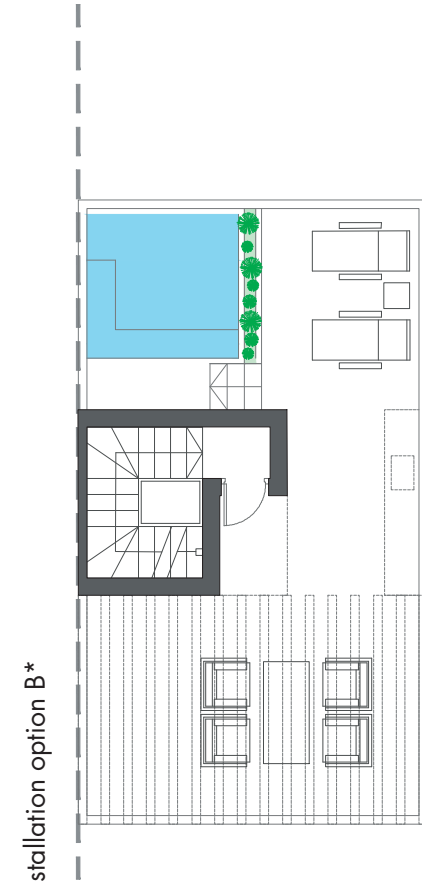
Interior view



ROOFTOP



ROOFTOP



ROOFTOP

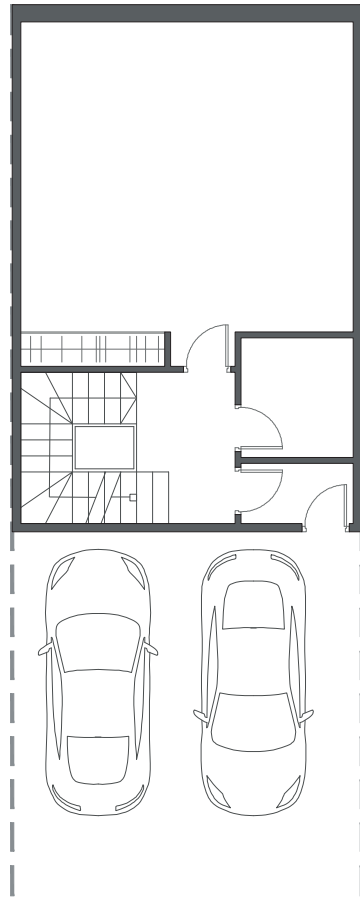
HOUSE 45 - BLOCK 6

TYPE 1-B - RIGHT

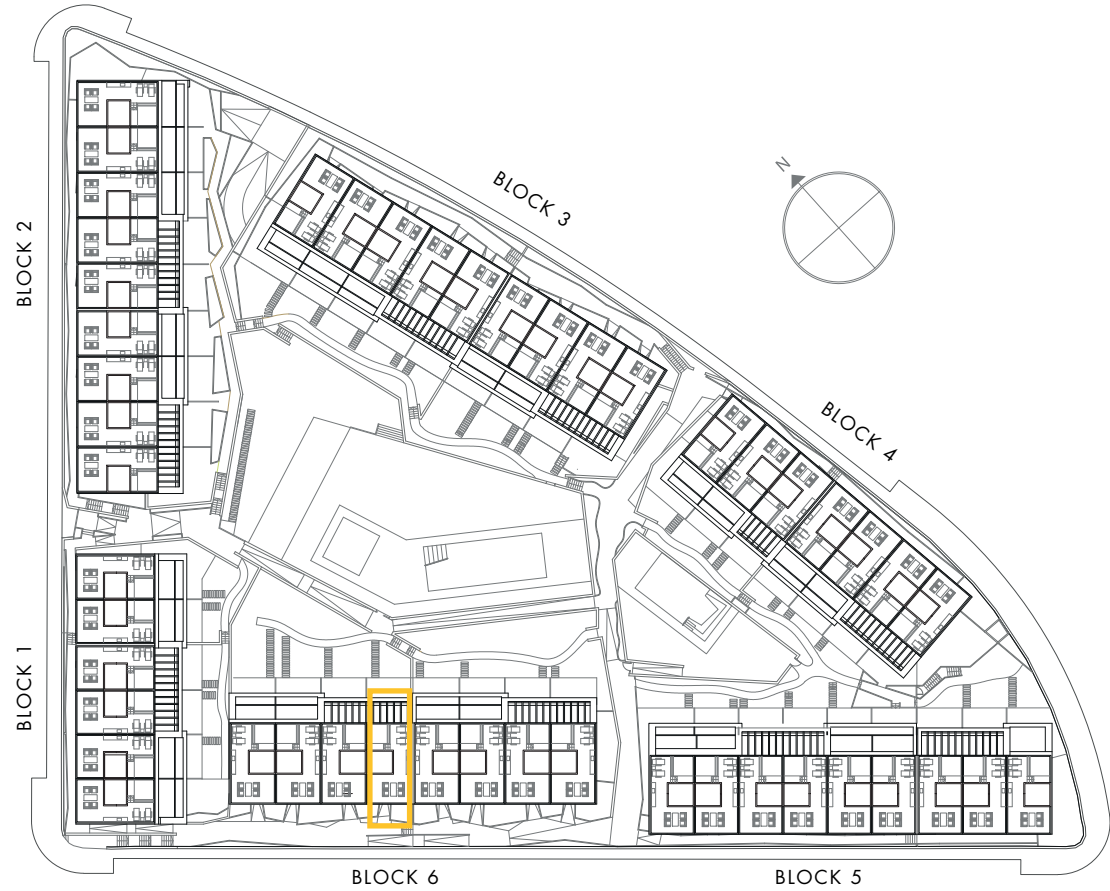
\*These options only include the pre-installation for a pergola, which the client can install in the desired configuration.



Interior view



BASEMENT



HOUSE 45 - BLOCK 6

TYPE 1-B - RIGHT



Interior view