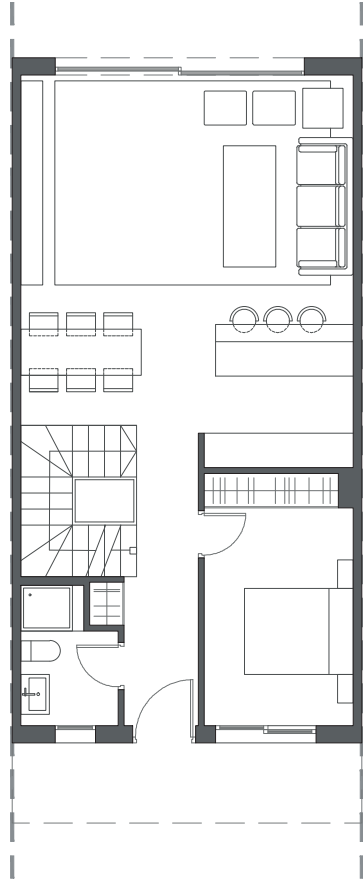
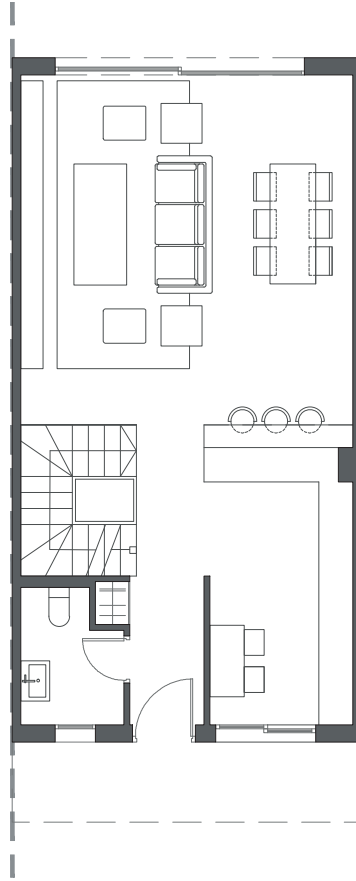


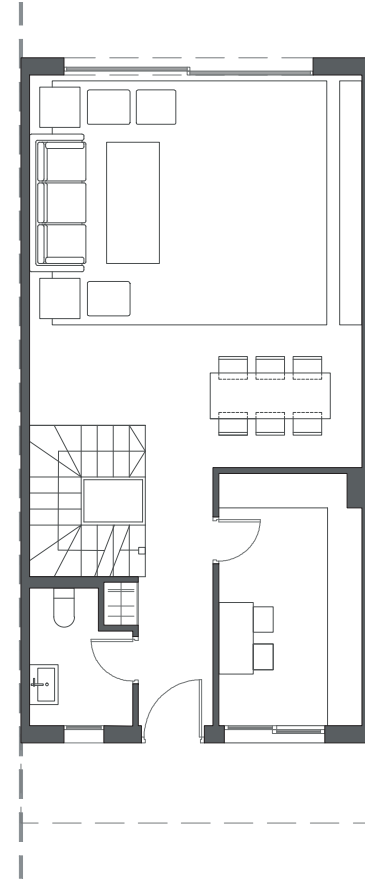
  
LA VALVEGA  
de La Cala



GROUND FLOOR A



GROUND FLOOR B



GROUND FLOOR C

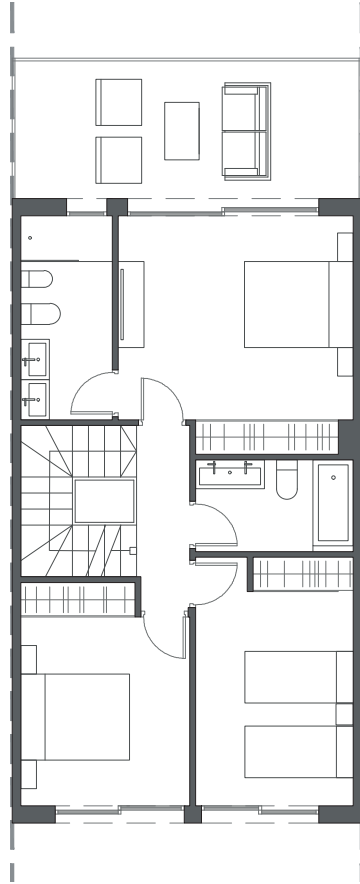
HOUSE 47 - BLOCK 6

TYPE 1-B - RIGHT

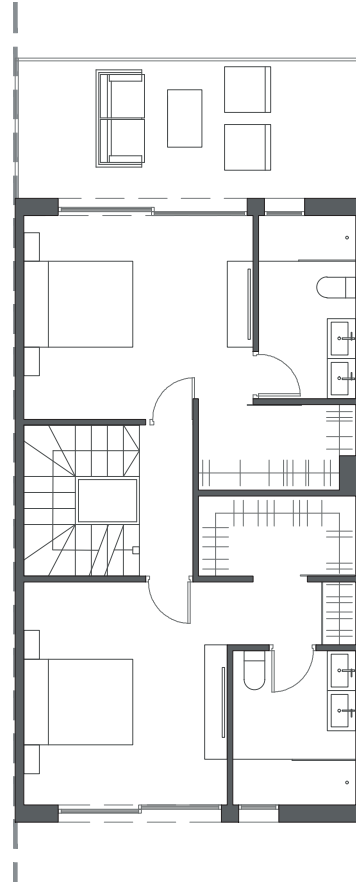


Interior view

  
LA VALVEGA  
de La Cala



FIRST FLOOR A



FIRST FLOOR B



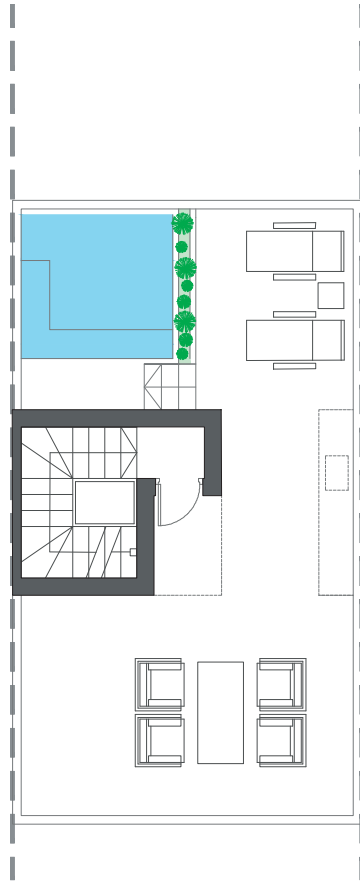
FIRST FLOOR C

HOUSE 47 - BLOCK 6

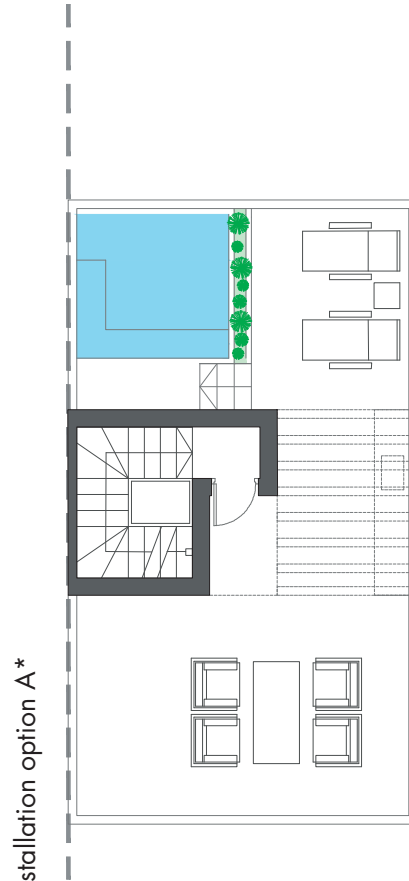
TYPE 1-B - RIGHT



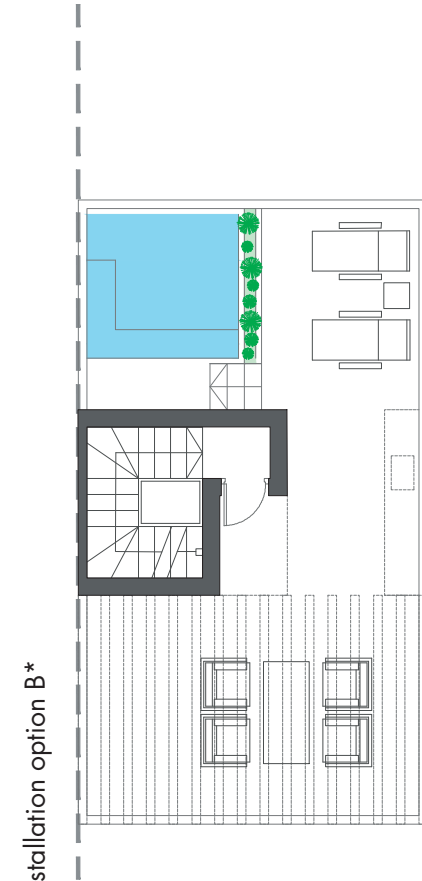
Interior view



ROOFTOP



ROOFTOP

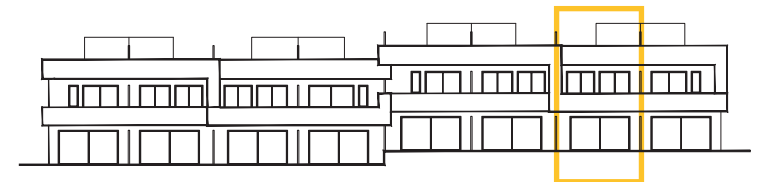


ROOFTOP

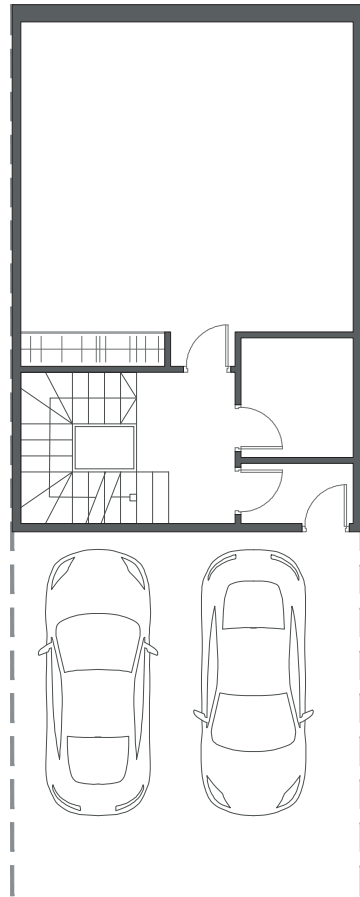
HOUSE 47 - BLOCK 6

TYPE 1-B - RIGHT

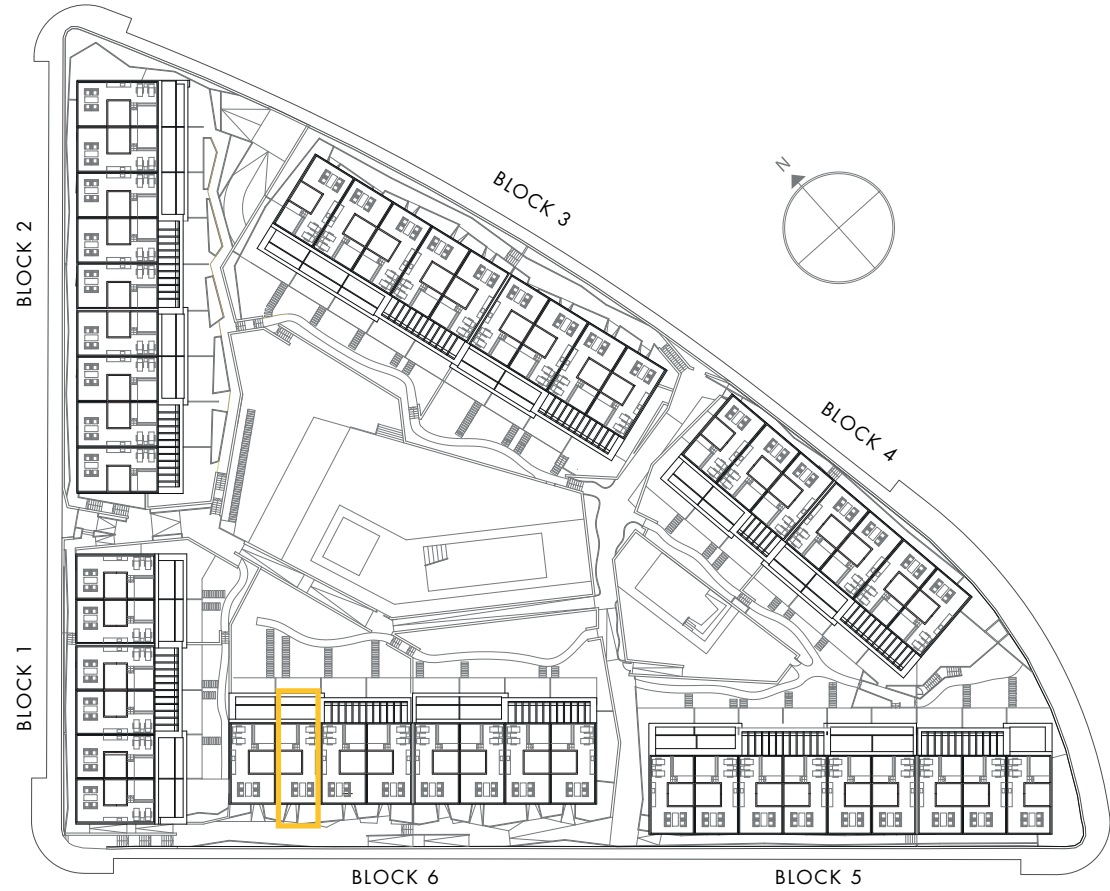
\*These options only include the pre-installation for a pergola, which the client can install in the desired configuration.



Interior view



BASEMENT



BLOCK 6

BLOCK 5

HOUSE 47 - BLOCK 6

TYPE 1-B - RIGHT



Interior view