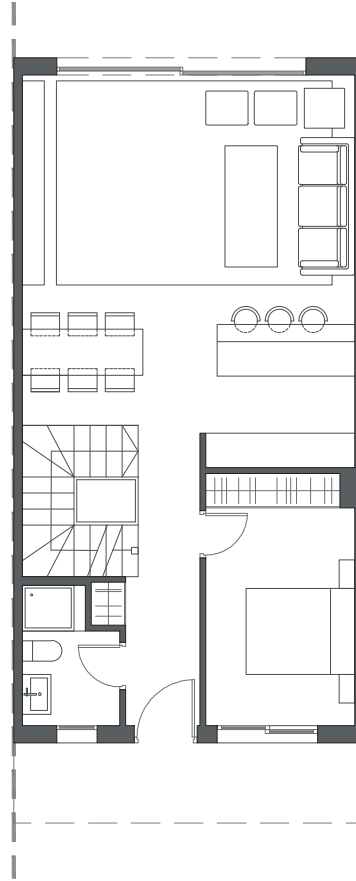


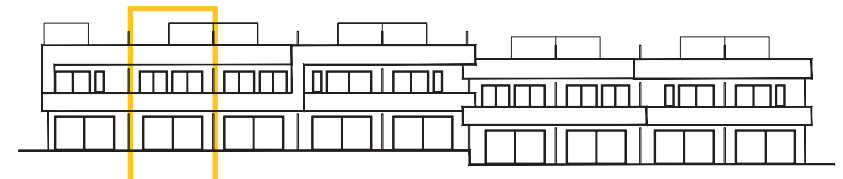

LA VALVEGA
de La Cala



GROUND FLOOR A

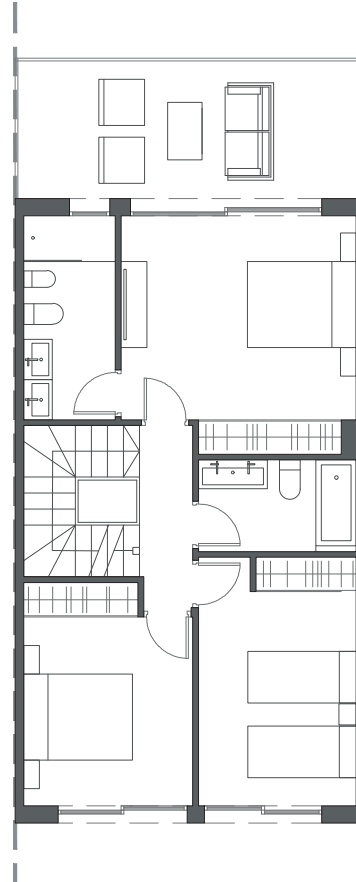
HOUSE 17 - BLOCK 3

TYPE 1-A - RIGHT



Interior view

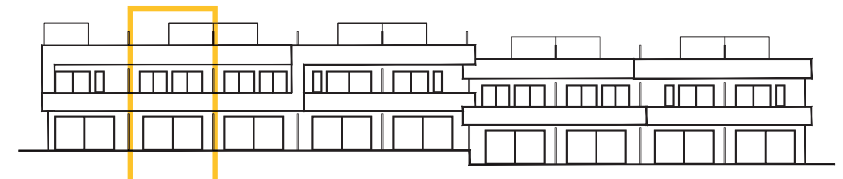

LA VALVEGA
de La Cala



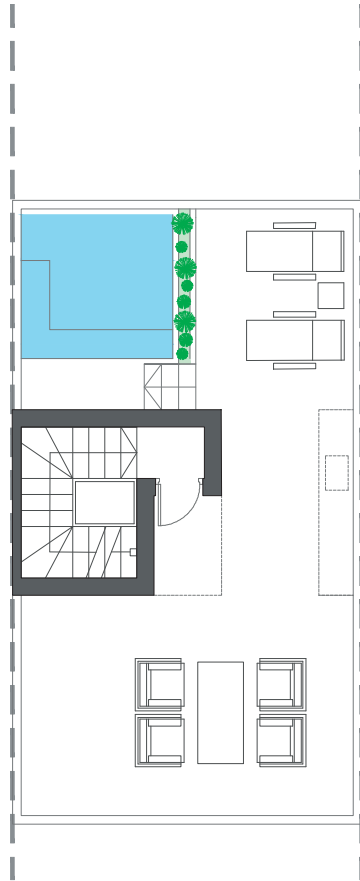
FIRST FLOOR A

HOUSE 17 - BLOCK 3

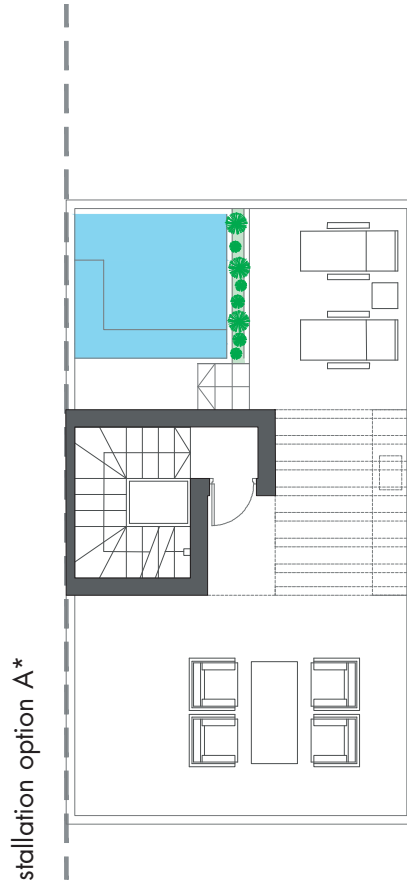
TYPE 1-A - RIGHT



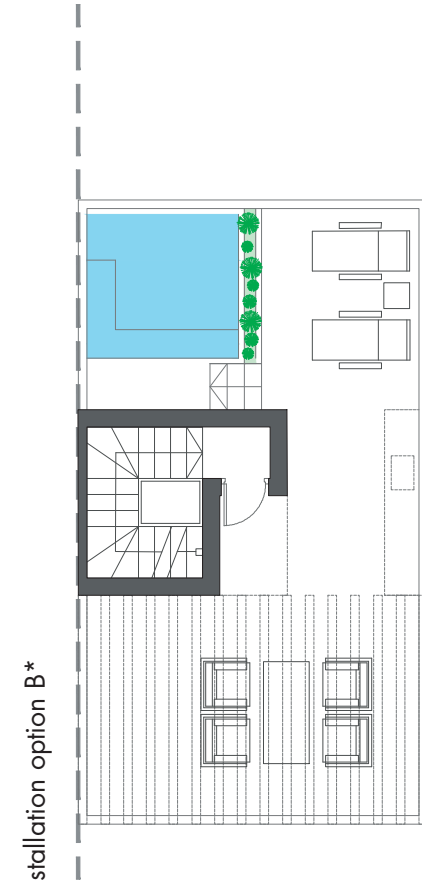
Interior view



ROOFTOP



ROOFTOP

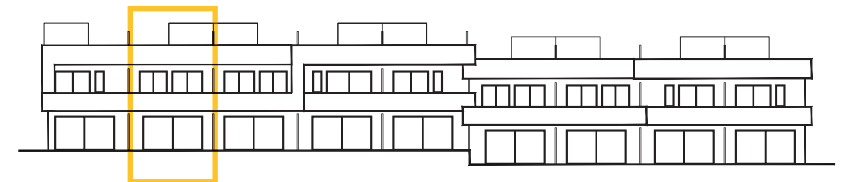


ROOFTOP

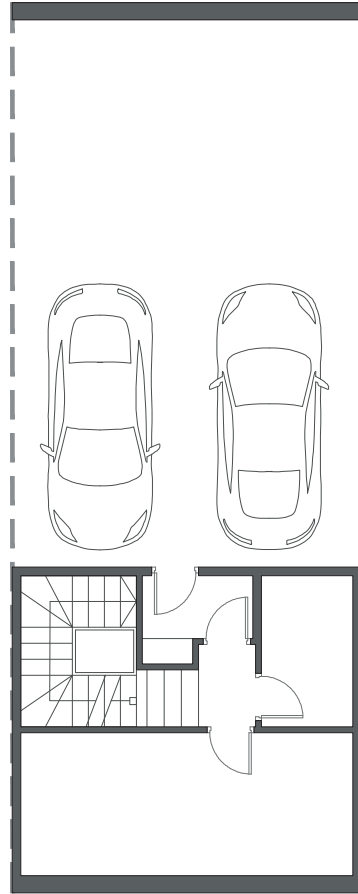
HOUSE 17 - BLOCK 3

TYPE 1-A - RIGHT

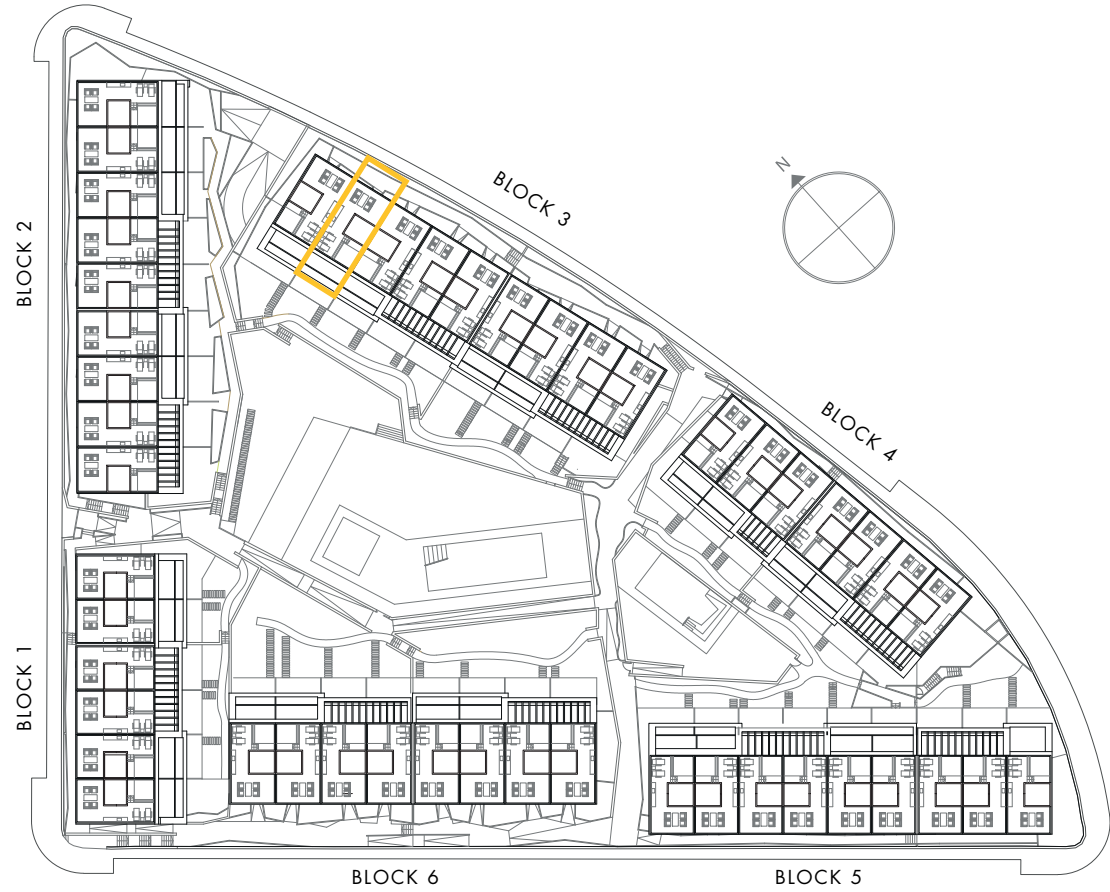
*These options only include the pre-installation for a pergola, which the client can install in the desired configuration.



Interior view



BASEMENT

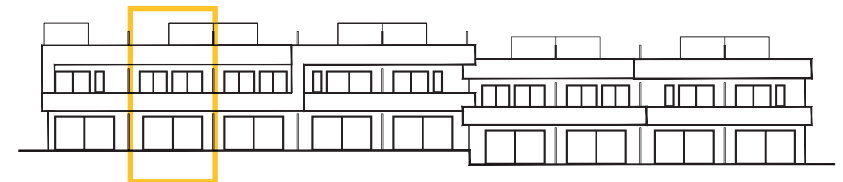


BLOCK 6

BLOCK 5

HOUSE 17 - BLOCK 3

TYPE 1-A - RIGHT



Interior view