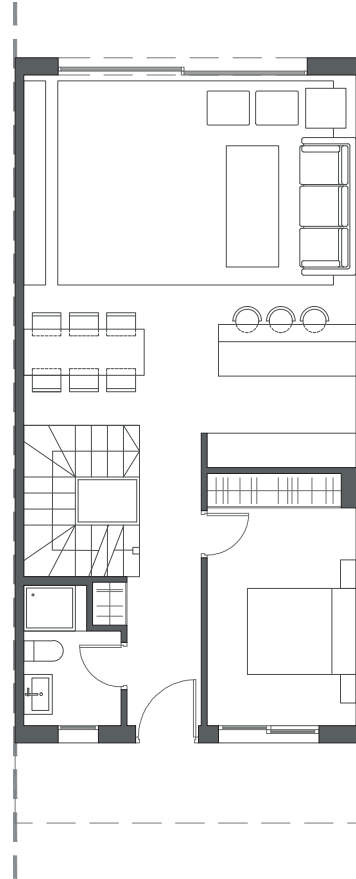


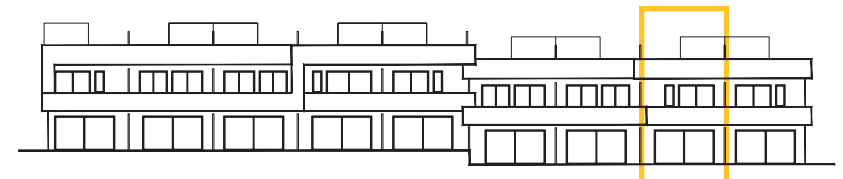
  
LA VALVEGA  
de La Cala



GROUND FLOOR A

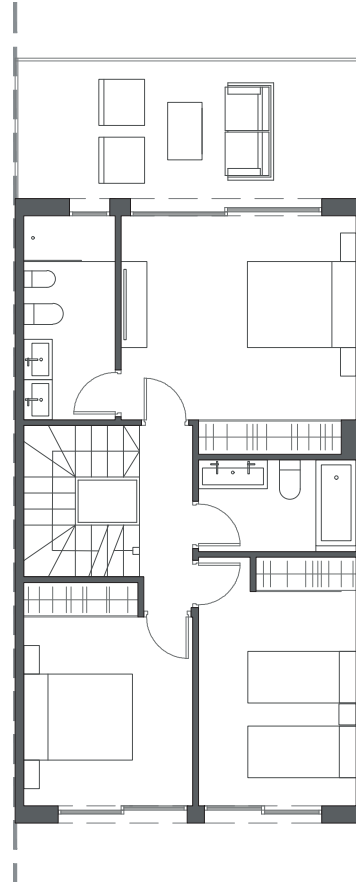
HOUSE 23 - BLOCK 3

TYPE 1-A - RIGHT



Interior view

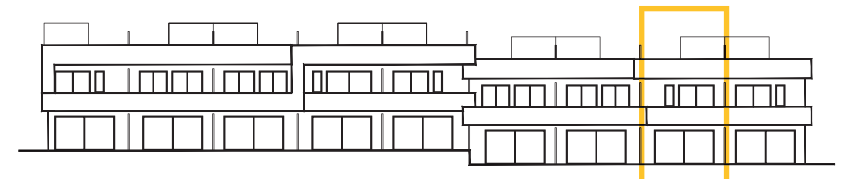
  
LA VALVEGA  
de La Cala



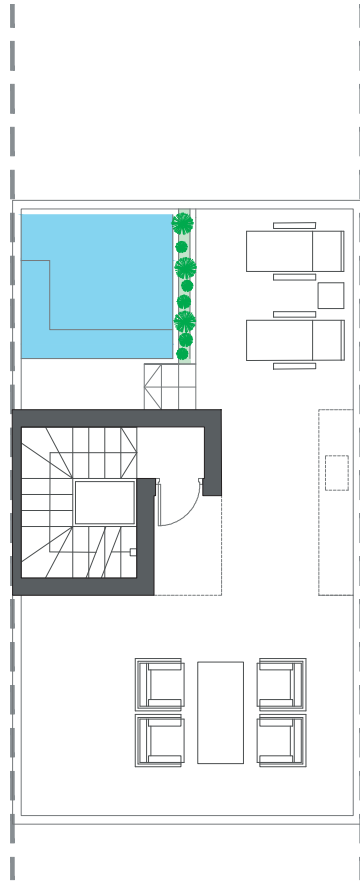
FIRST FLOOR A

HOUSE 23 - BLOCK 3

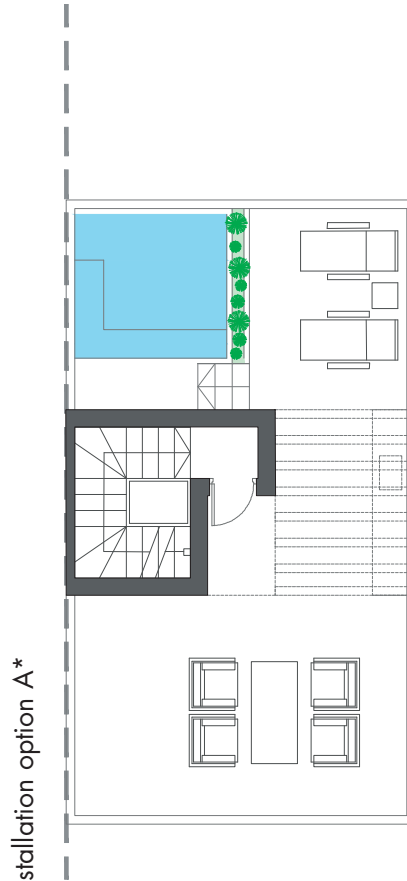
TYPE 1-A - RIGHT



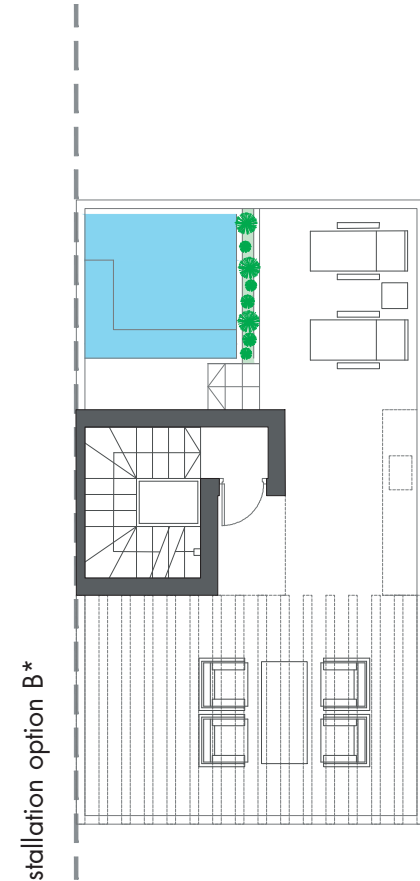
Interior view



ROOFTOP



ROOFTOP

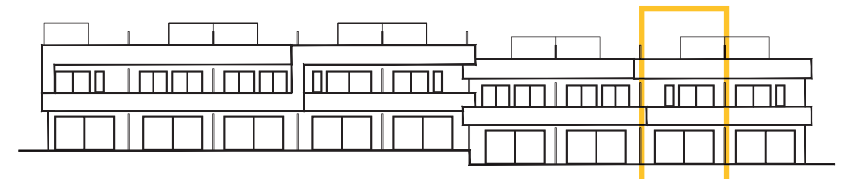


ROOFTOP

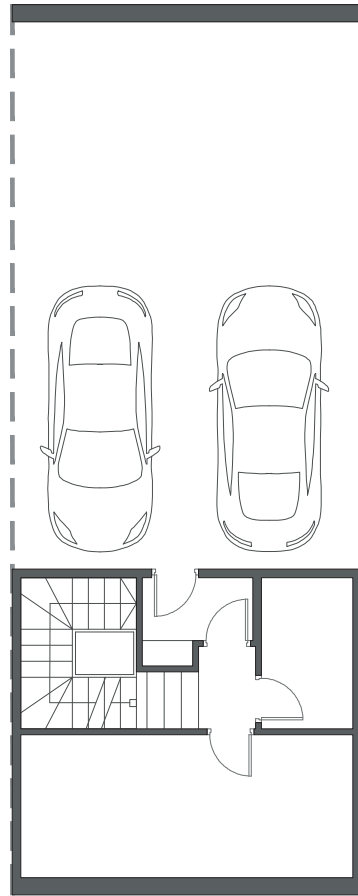
HOUSE 23 - BLOCK 3

TYPE 1-A - RIGHT

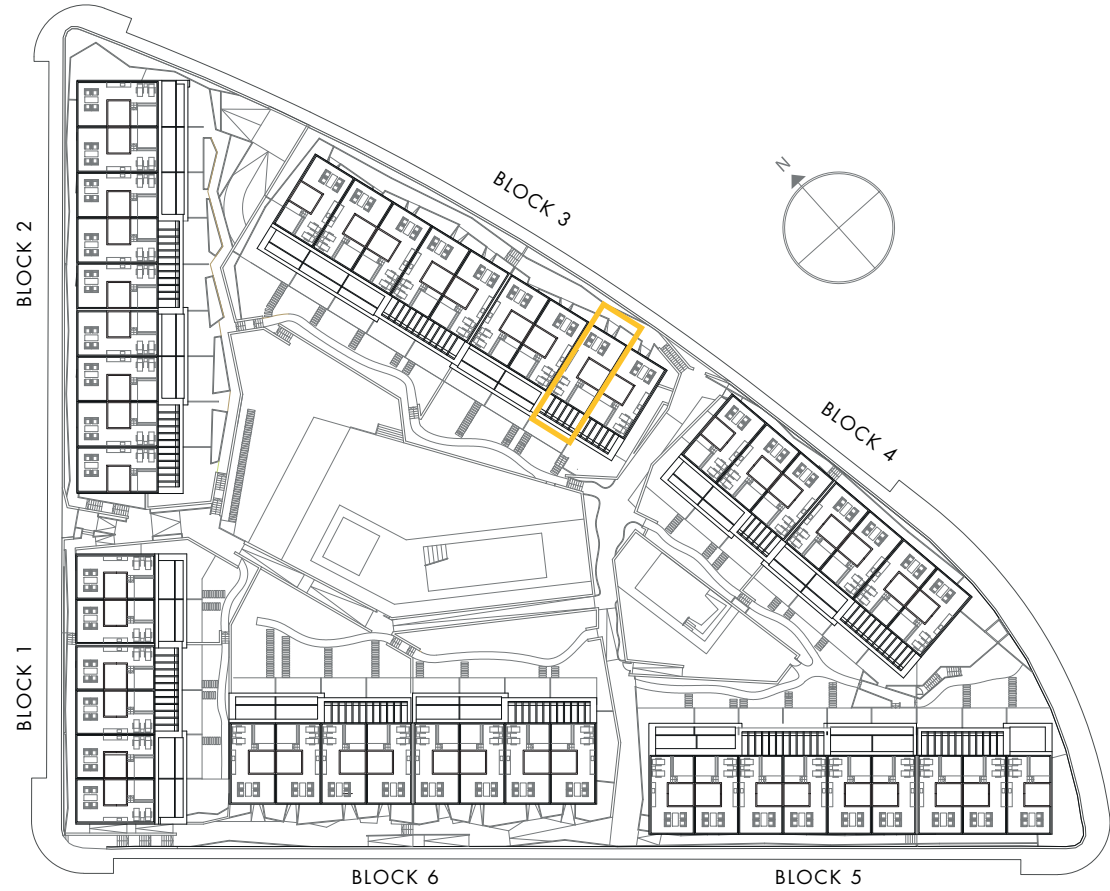
\*These options only include the pre-installation for a pergola, which the client can install in the desired configuration.



Interior view

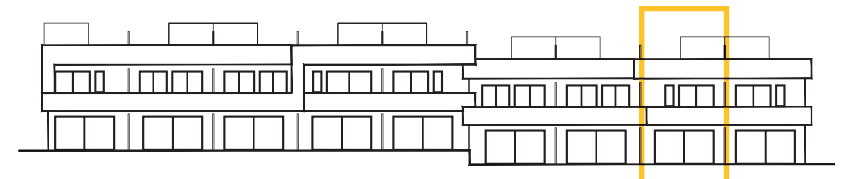


BASEMENT



HOUSE 23 - BLOCK 3

TYPE 1-A - RIGHT



Interior view