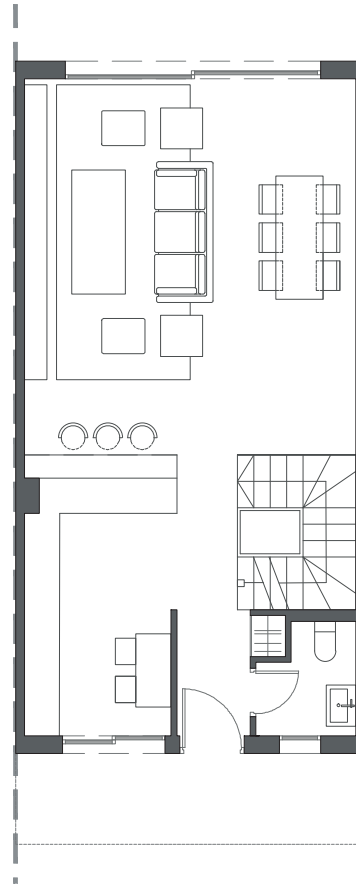



LA VALVEGA
de La Cala



GROUND FLOOR B

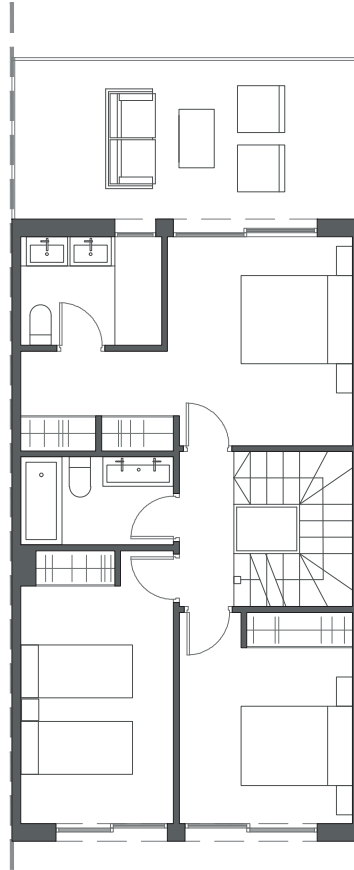
HOUSE 27 - BLOCK 4

TYPE 2 - LEFT



Interior view


LA VALVEGA
de La Cala



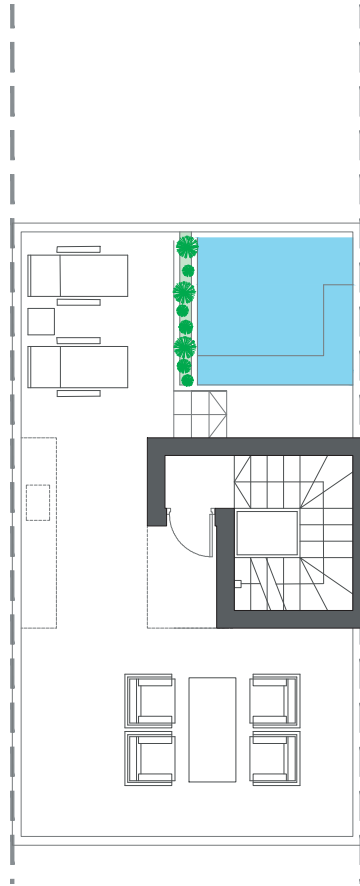
FIRST FLOOR A

HOUSE 27 - BLOCK 4

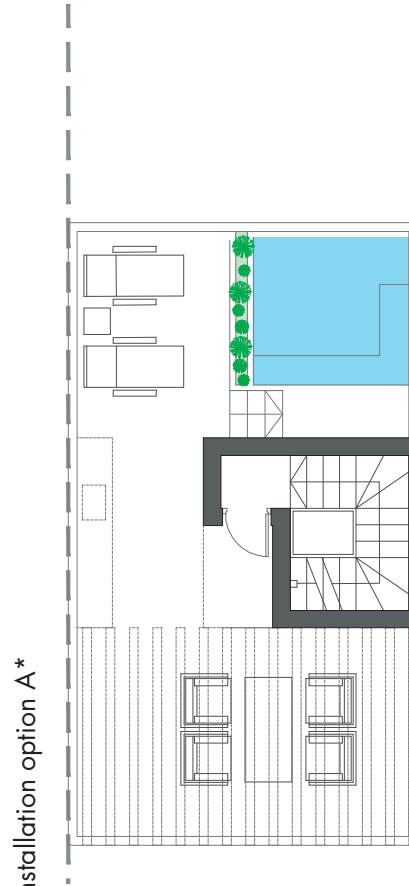
TYPE 2 - LEFT



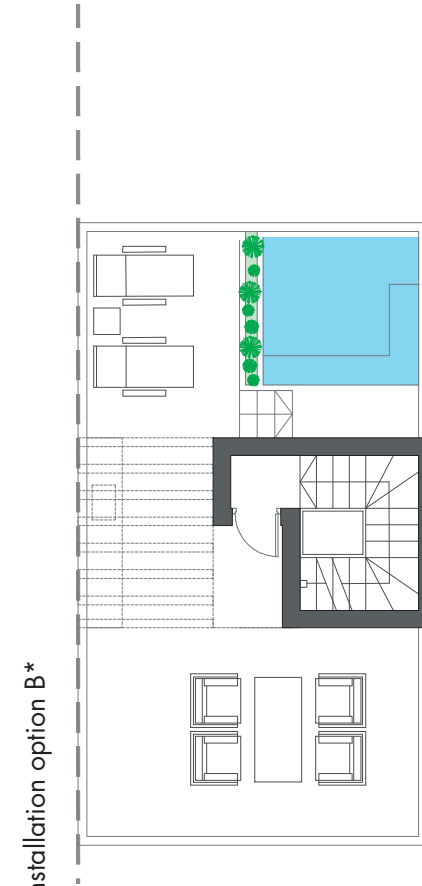
Interior view



ROOFTOP



ROOFTOP



ROOFTOP

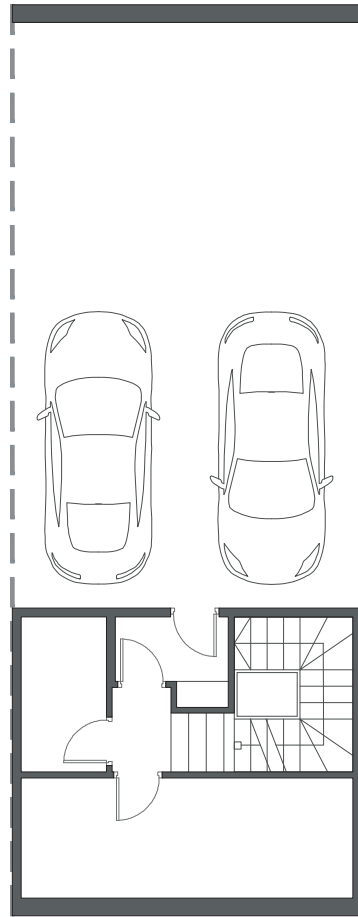
HOUSE 27 - BLOCK 4

TYPE 2 - LEFT

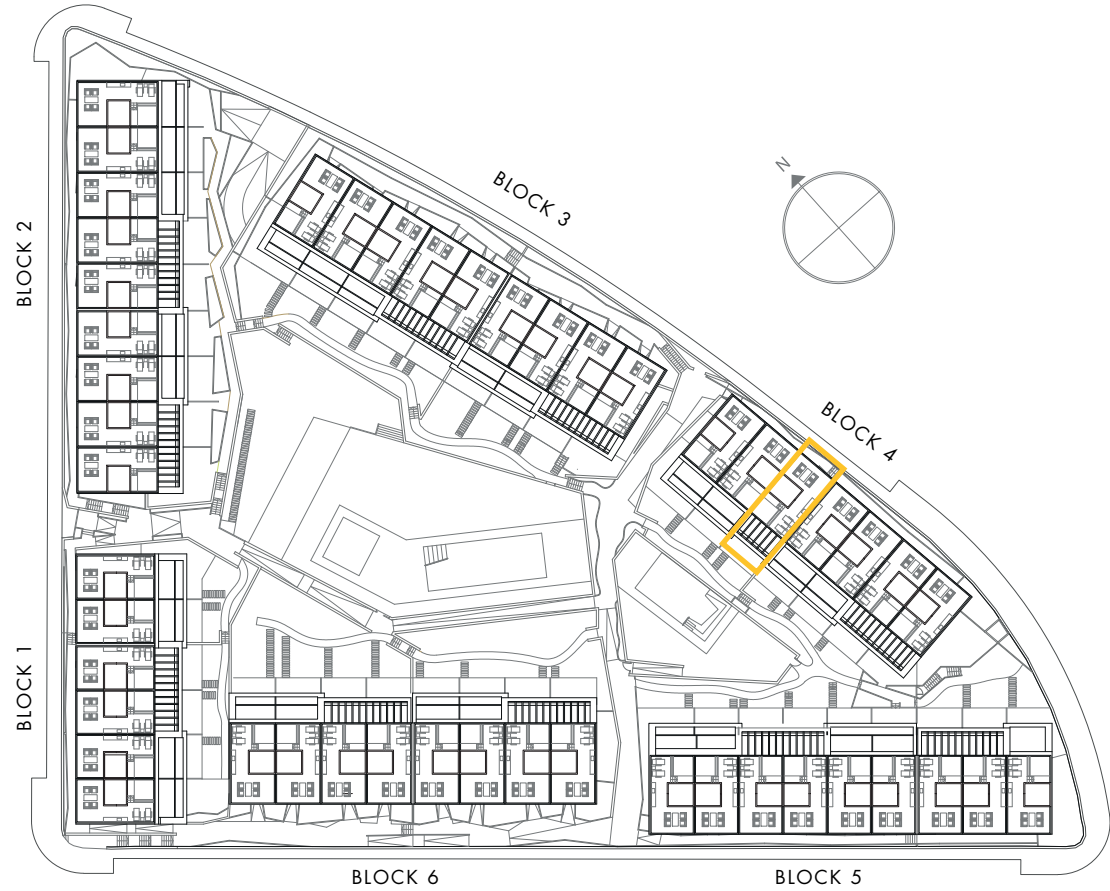


Interior view

*These options only include the pre-installation for a pergola, which the client can install in the desired configuration.



BASEMENT



BLOCK 6

BLOCK 5

HOUSE 27 - BLOCK 4

TYPE 2 - LEFT



Interior view